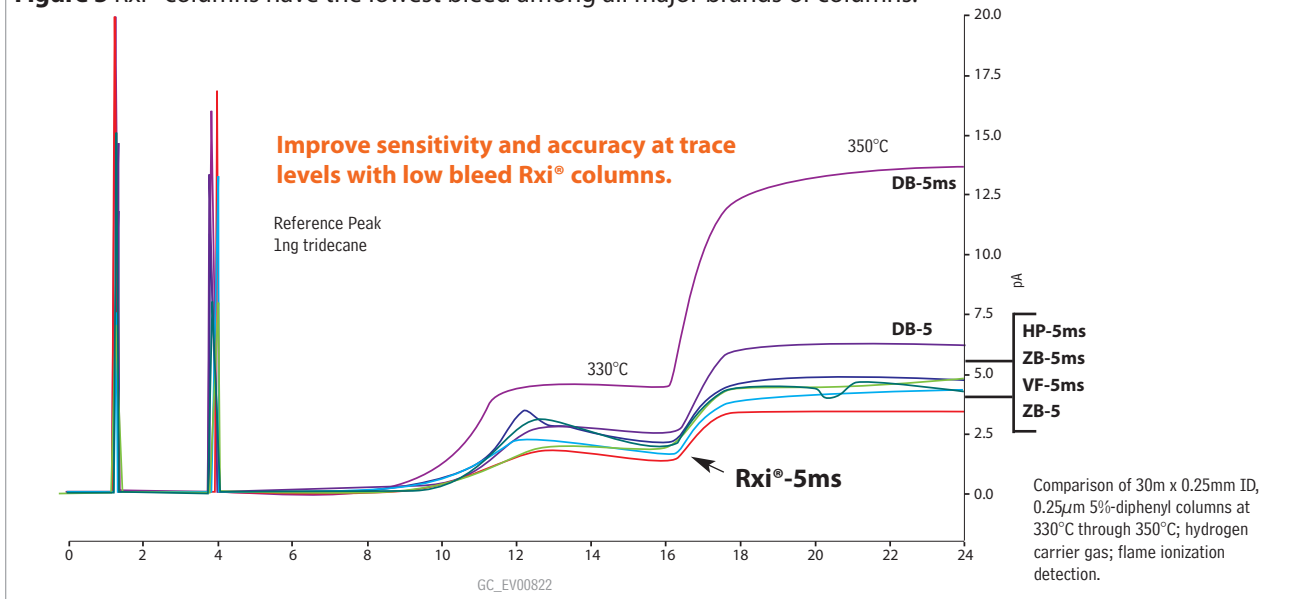


Lowest Bleed

Rxi® columns are more stable at high temperatures than any other manufacturer's column (Figure 5), resulting in higher system sensitivity. This low-bleed characteristic is the result of superior stabilization achieved by optimizing polymer cross-linking and surface deactivation technologies. Benefits of using ultra-low bleed Rxi® columns include:

- Increased sensitivity, for lower detection limits and better matches to mass spectral libraries.
- Faster system stabilization.
- Reduced detector contamination and less downtime for maintenance.

Figure 5 Rxi® columns have the lowest bleed among all major brands of columns.



Exceptional Reproducibility

Chromatographers today need to know that every column they receive is going to perform the same way as the column it replaces. Unmatched manufacturing precision and stringent quality control mean Rxi® columns exceed industry standards, resulting in the best column-to-column reproducibility available as measured by efficiency, retention, bleed, and inertness (Figure 6).

Figure 6 Rxi® columns are engineered to assure column-to-column and lot-to-lot reproducibility.

