

Method 624 (Purgeable Halocarbons) *cont'd*

624 Complete Kit

Contains 1mL each of these mixtures.
30020: 624 Calibration Mix #1
30021: 624 Calibration Mix #2
30022: 624 Calibration Mix #3
30023: 624 Internal Standard Mix
30243: 624 Surrogate Standard Mix



cat. # 30244 (kit)

Quantity discounts not available.

624 Kit

Contains 1mL each of these mixtures.
30020: 624 Calibration Mix #1
30021: 624 Calibration Mix #2
30022: 624 Calibration Mix #3
30023: 624 Internal Standard Mix



cat. # 30055 (kit)

Quantity discounts not available.

Individual VOA Surrogate and Internal Standards for EPA Methods

Volume is 1mL/ampul. Concentration is µg/mL.

Compound	Solvent	Conc.	cat.# (ea.)	price
benzene-d6	PTM	2,000	30025	
2-bromochlorobenzene	PTM	2,000	30228	
4-bromochlorobenzene	PTM	2,000	30230	
bromochloromethane	PTM	2,000	30225	
2-bromo-1-chloropropane	PTM	2,000	30226	
4-bromofluorobenzene	PTM	2,000	30026	
chlorobenzene-d5	PTM	2,000	30223	
1-chloro-2-fluorobenzene	PTM	2,000	30040	
1,2-dichlorobenzene-d4	PTM	2,000	30049	
1,4-dichlorobutane	PTM	2,000	30227	
1,2-dichloroethane-d4	PTM	2,000	30027	
1,4-difluorobenzene	PTM	2,000	30032	
ethylbenzene-d5	PTM	2,000	30028	
ethylbenzene-d10	PTM	2,000	30029	
fluorobenzene	PTM	2,000	30030	
pentafluorobenzene	PTM	2,000	30031	
toluene-d8	PTM	2,000	30224	
α,α,α-trifluorotoluene	PTM	2,000	30048	

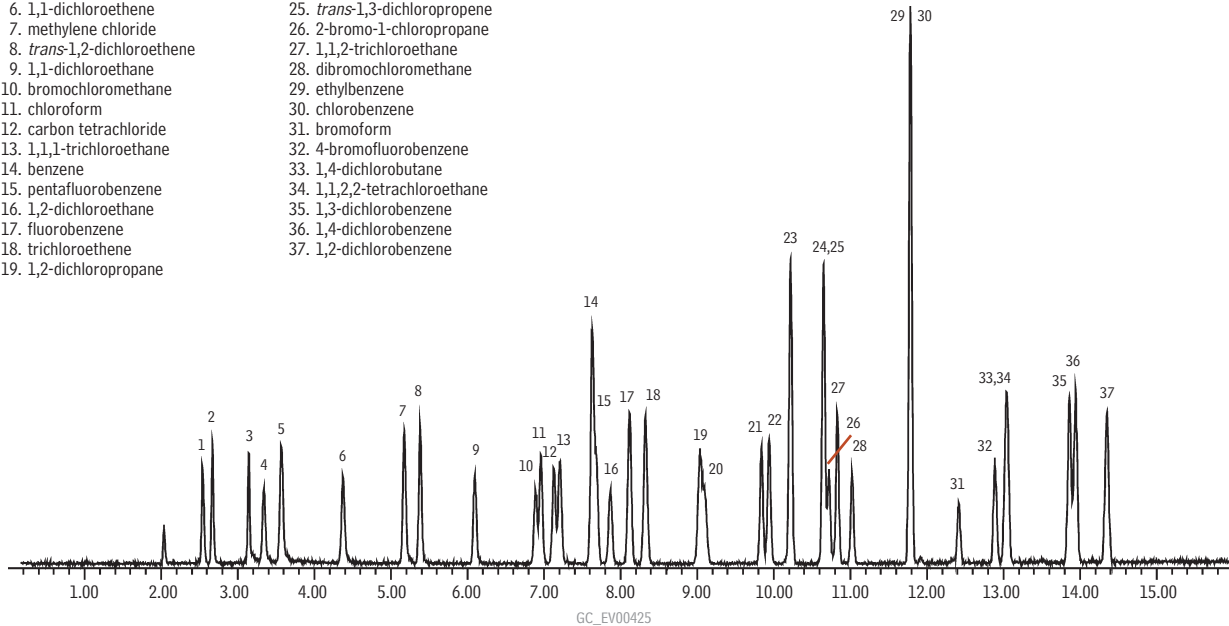
PTM = Purge & trap grade methanol

EPA Method 624 on an Rtx®-VMS column.

- | | |
|-------------------------------------|---------------------------------------|
| 1. chloromethane | 20. bromodichloromethane |
| 2. vinyl chloride | 21. 2-chloroethyl vinyl ether |
| 3. bromomethane | 22. <i>cis</i> -1,3-dichloropropene |
| 4. chloroethane | 23. toluene |
| 5. trichlorofluoromethane | 24. tetrachloroethene |
| 6. 1,1-dichloroethene | 25. <i>trans</i> -1,3-dichloropropene |
| 7. methylene chloride | 26. 2-bromo-1-chloropropane |
| 8. <i>trans</i> -1,2-dichloroethene | 27. 1,1,2-trichloroethane |
| 9. 1,1-dichloroethane | 28. dibromochloromethane |
| 10. bromochloromethane | 29. ethylbenzene |
| 11. chloroform | 30. chlorobenzene |
| 12. carbon tetrachloride | 31. bromoform |
| 13. 1,1,1-trichloroethane | 32. 4-bromofluorobenzene |
| 14. benzene | 33. 1,4-dichlorobutane |
| 15. pentafluorobenzene | 34. 1,1,2,2-tetrachloroethane |
| 16. 1,2-dichloroethane | 35. 1,3-dichlorobenzene |
| 17. fluorobenzene | 36. 1,4-dichlorobenzene |
| 18. trichloroethene | 37. 1,2-dichlorobenzene |
| 19. 1,2-dichloropropane | |

Our Rtx®-VMS capillary GC column is optimized for EPA Method 624!

See **page 100** for more information.



Column: Rtx®-VMS, 30m, 0.25mm ID, 1.40µm (cat#19915)
Conc.: 20 ppb in 5mL of RO water
Concentrator: Tekmar LSC-3000 Purge and Trap
Trap: Vocab 3000 (type K)
Purge: 11 min. @ 40mL/min. (ambient temperature)
Dry purge: 1 min. @ 40mL/min. (MCS bypassed using Silcosteel® tubing)
Desorb preheat: 245°C
Desorb: 250°C for 2 min., Flow 10mL/min.
Bake: 260°C for 8 min.

GC Interface: 1:10 split at injection port. 1mm ID liner.
GC: Agilent 6890
Oven temp.: 40°C (hold 4 min.) to 95°C @ 24°C/min. (hold 3 min.), to 210°C @ 40°C/min. (hold 6 min.)
Carrier gas: helium @ ~1mL/min. constant flow
Adjust dichlorodifluoromethane to a retention time of 2.54 min. @ 40°C
Detector: Agilent 5973 MSD
Scan range: 25-300 amu