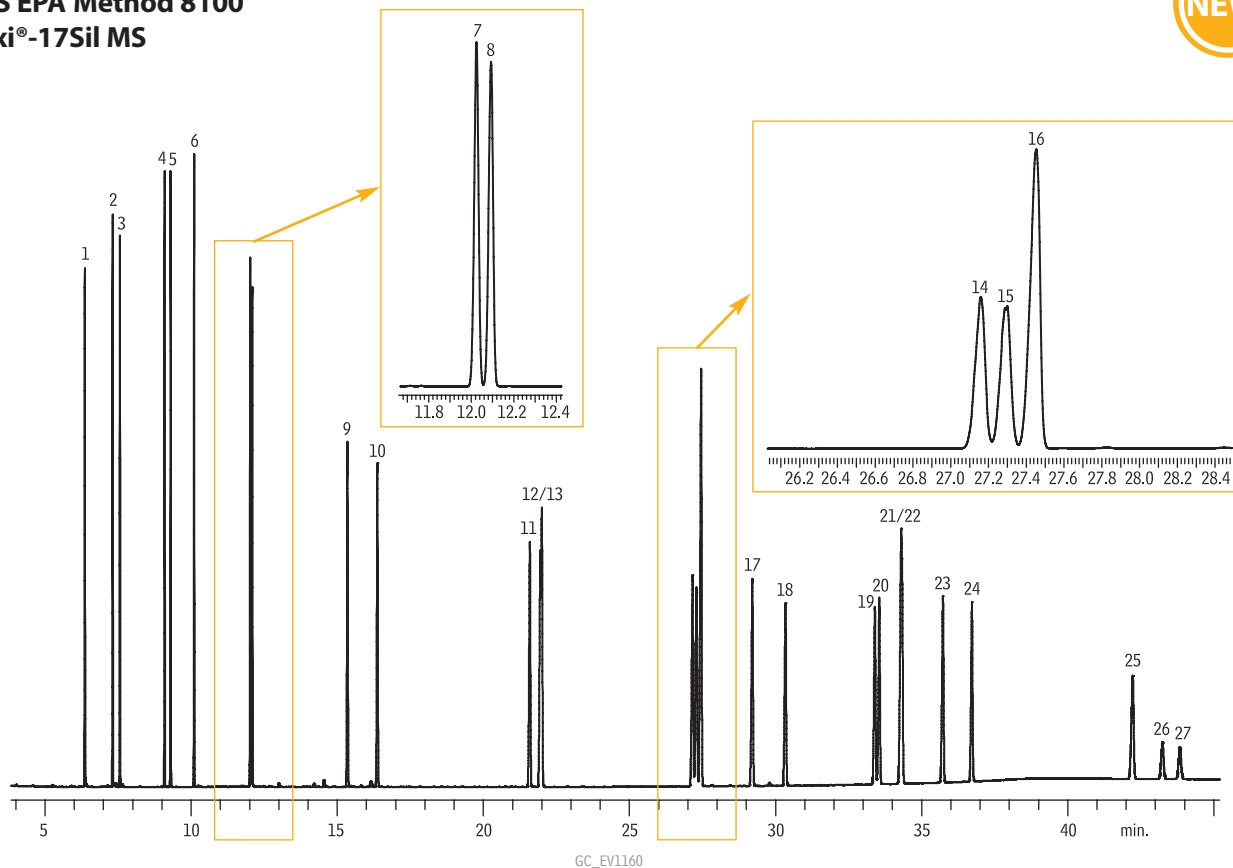


Polycyclic Aromatic Hydrocarbons
US EPA Method 8100
Rxi®-17Sil MS



GC_EV1160

- | | |
|--------------------------|------------------------------|
| 1. Naphthalene | 15. Benzo[k]fluoranthene |
| 2. 2-Methylnaphthalene | 16. Benzo(j)fluoranthene |
| 3. 1-Methylnaphthalene | 17. Benzo[a]pyrene |
| 4. Acenaphthylene | 18. 3-Methylcholanthrene |
| 5. Acenaphthene | 19. Dibenz(a,h)acridine |
| 6. Fluorene | 20. Dibenz[a,j]acridine |
| 7. Phenanthrene | 21. Indeno[1,2,3-cd]pyrene |
| 8. Anthracene | 22. Dibenz[a,h]anthracene |
| 9. Fluoranthene | 23. Benzo[ghi]perylene |
| 10. Pyrene | 24. 7H-Dibenzo[c,g]carbazole |
| 11. Benz[a]anthracene | 25. Dibenz[a,e]pyrene |
| 12. Chrysene | 26. Dibenz(a,i)pyrene |
| 13. Triphenylene | 27. Dibenz(a,h)pyrene |
| 14. Benzo[b]fluoranthene | |

Column Rxi®-17Sil MS, 30 m, 0.25 mm ID, 0.25 µm (cat.# 14123)
Sample SV Calibration Mix #5 / 610 PAH Mix (cat.# 31011)
 EPA Method 8310 PAH Mixture (cat.# 31841)
 dichloromethane
 10 ppm

Diluent:
Conc.:
Injection
 Inj. Vol.: 0.5 µL splitless (hold 1.75 min.)
 Liner: Auto SYS XL PSS Split/Splitless w/Wool (cat.# 21718)
 Inj. Temp.: 320 °C
 Purge Flow: 75 mL/min.

Oven
 Oven Temp: 65 °C (hold 0.5 min.) to 220 °C at 15 °C/min. to 330 °C at 4 °C/min. (hold 15 min.)
Carrier Gas
 He, constant flow
 Flow Rate: 2.0 mL/min.

Detector
 FID @ 320 °C

Instrument
 PE Clarus 600 GC

Acknowledgement
 Instrument provided by PerkinElmer

Restek Customer Service

In the U.S.
 Call: 800-356-1688 (ext. 3) or 814-353-1300 (ext. 3)
 Monday–Friday 8:00 a.m.–6:00 p.m. ET
 Fax: 814-353-1309—24-hours a day
 Online: www.restek.com—24-hours a day

Outside the U.S.
 Contact your Restek representative:
 Refer to our list on pages 4-5 or visit our website at www.restek.com



Mike Shuey, Customer Service