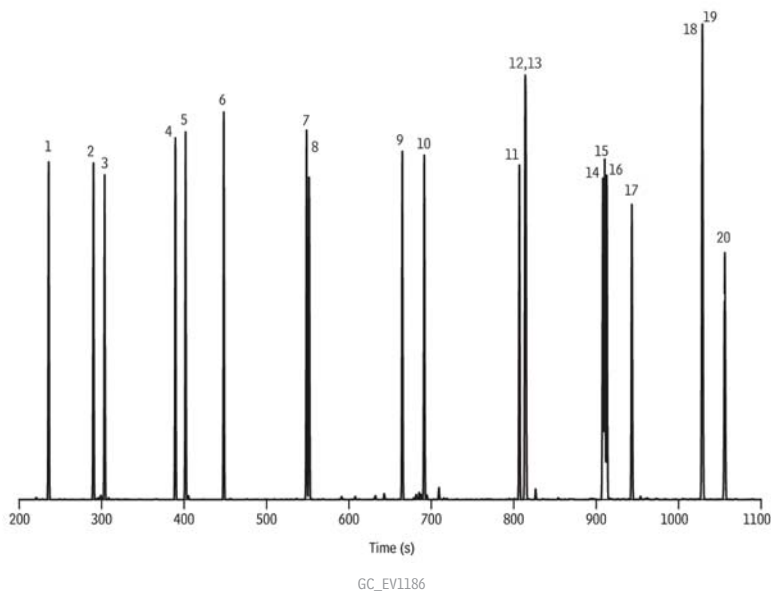


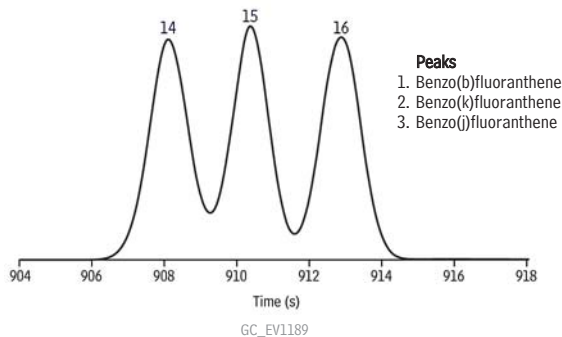


**Polycyclic Aromatic Hydrocarbons**  
Rxi®-17Sil MS (15 m x 0.25 mm x 0.25 µm)



- Peaks**
1. Naphthalene
  2. 2-Methylnaphthalene
  3. 1-Methylnaphthalene
  4. Acenaphthylene
  5. Acenaphthene
  6. Fluorene
  7. Phenanthrene
  8. Anthracene
  9. Fluoranthene
  10. Pyrene
  11. Benzo(a)anthracene
  12. Chrysene
  13. Triphenylene
  14. Benzo(b)fluoranthene
  15. Benzo(k)fluoranthene
  16. Benzo(j)fluoranthene
  17. Benzo(a)pyrene
  18. Indeno(1,2,3-cd)pyrene
  19. Dibenz(a,h)anthracene
  20. Benzo(ghi)perylene

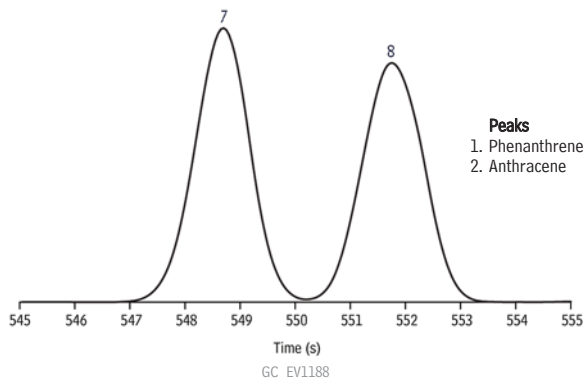
**Benzofluoranthenes**  
Rxi®-17Sil MS (15 m x 0.25 mm x 0.25 µm)



- Peaks**
1. Benzo(b)fluoranthene
  2. Benzo(k)fluoranthene
  3. Benzo(j)fluoranthene

**Column** Rxi®-17Sil MS, 15 m, 0.25 mm ID, 0.25 µm (cat.# 14120)  
**Sample**  
 Diluent: Methylene chloride  
 Conc.: 20 ng/µL  
**Injection**  
 Inj. Vol.: 1 µL split (split ratio 20:1)  
 Liner: 4mm Split Precision® Liner w/Wool (cat.# 21022)  
 Inj. Temp.: 275 °C  
 Split Vent  
 Flow Rate: 42 mL/min.  
**Oven**  
 Oven Temp: 80 °C (hold 1 min.) to 320 °C at 15 °C/min. (hold 2 min.)  
**Carrier Gas**  
 H<sub>2</sub>, constant flow  
 Flow Rate: 2 mL/min.  
**Detector**  
 FID @ 340 °C  
 Constant Column +  
 Constant Make-up: 50 mL/min.  
 Make-up  
 Gas Type: N<sub>2</sub>  
 Data Rate: 20 Hz  
**Instrument** Agilent/HP6890 GC

**Phenanthrene and Anthracene**  
Rxi®-17Sil MS (15 m x 0.25 mm x 0.25 µm)



- Peaks**
1. Phenanthrene
  2. Anthracene