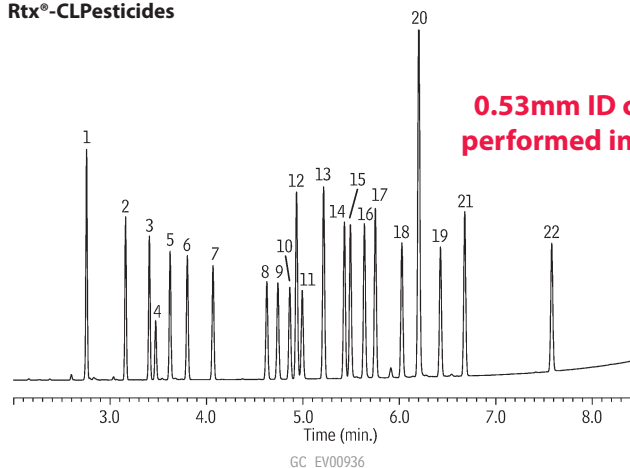


Organochlorine Pesticide Mix AB #2

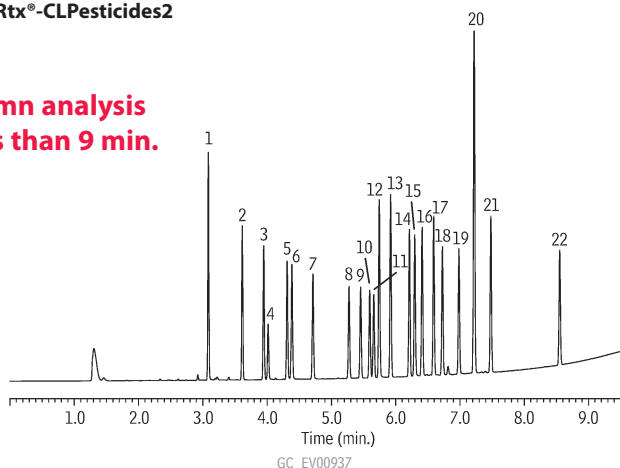
US EPA Method 8081

Rtx®-CLPesticides and Rtx®-CLPesticides2 (0.53mm ID Column Set)

Rtx®-CLPesticides



Rtx®-CLPesticides2



Columns: Rtx®-CLPesticides, 30m, 0.53mm ID, 0.50 μ m (cat.# 11140) and Rtx®-CLPesticides2, 30m, 0.53mm ID, 0.42 μ m (cat.# 11340) with 5m x 0.53mm ID Rxi® deactivated guard tubing (cat.# 10054), connected using Siltek® Treated Universal "Y" Press-Tight® connector (cat.# 20486)

Sample: Organochlorine Pesticide Mix AB #2, 8-80 μ g/mL each component in hexane/toluene (cat.# 32292), Pesticide Surrogate Mix, 200 μ g/mL each component in acetone (cat.# 32000)

Inj.: 1.0 μ L splitless (hold 0.3 min.), 4mm single gooseneck inlet liner (cat.# 20799)

Inj. temp.: 250°C

Carrier gas: helium, constant flow

Linear velocity: 45cm/sec. @ 120°C

Oven temp.: 120°C to 200°C @ 45°C/min. to 230°C @ 12.5°C/min. to 320°C (hold 2 min.) @ 20°C/min.

Det.: μ -ECD @ 330°C

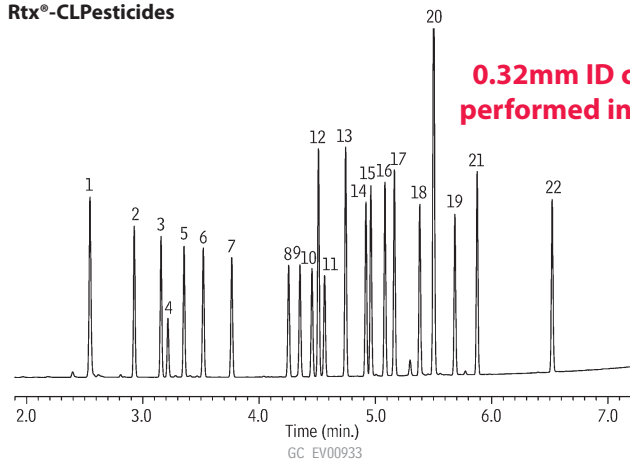
- | | |
|---|-----------------------------|
| 1. 2,4,5,6-tetrachloro- <i>m</i> -xylene (SS) | 12. 4,4'-DDE |
| 2. α -BHC | 13. dieldrin |
| 3. γ -BHC | 14. endrin |
| 4. β -BHC | 15. 4,4'-DDD |
| 5. δ -BHC | 16. endosulfan II |
| 6. heptachlor | 17. 4,4'-DDT |
| 7. aldrin | 18. endrin aldehyde |
| 8. heptachlor epoxide (isomer B) | 19. endosulfan sulfate |
| 9. γ -chlordane | 20. methoxychlor |
| 10. α -chlordane | 21. endrin ketone |
| 11. endosulfan I | 22. decachlorobiphenyl (SS) |

Organochlorine Pesticide Mix AB #2

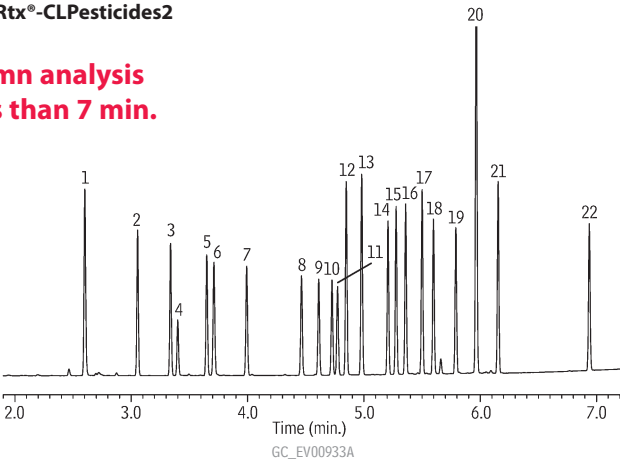
US EPA Method 8081

Rtx®-CLPesticides and Rtx®-CLPesticides2 (0.32mm ID Column Set)

Rtx®-CLPesticides



Rtx®-CLPesticides2



Columns: Rtx®-CLPesticides, 30m, 0.32mm ID, 0.32 μ m (cat.# 11141) and Rtx®-CLPesticides2, 30m, 0.32mm ID, 0.25 μ m (cat.# 11324) with 5m x 0.32mm ID Rxi® deactivated guard tubing (cat.# 10039), connected using Deactivated Universal "Y" Press-Tight® connector (cat.# 20405-261)

Sample: Organochlorine Pesticide Mix AB #2, 8-80 μ g/mL each component in hexane/toluene (cat.# 32292), Pesticide Surrogate Mix, 200 μ g/mL each component in acetone (cat.# 32000)

Inj.: 1.0 μ L splitless (hold 0.3 min.), 4mm single gooseneck inlet liner (cat.# 20799)

Inj. temp.: 250°C

Carrier gas: helium, constant flow

Linear velocity: 60cm/sec. @ 120°C

Oven temp.: 120°C to 200°C @ 45°C/min. to 230°C @ 15°C/min. to 330°C (hold 2 min.) @ 30°C/min.

Det.: μ -ECD @ 330°C

- | | |
|---|-----------------------------|
| 1. 2,4,5,6-tetrachloro- <i>m</i> -xylene (SS) | 12. 4,4'-DDE |
| 2. α -BHC | 13. dieldrin |
| 3. γ -BHC | 14. endrin |
| 4. β -BHC | 15. 4,4'-DDD |
| 5. δ -BHC | 16. endosulfan II |
| 6. heptachlor | 17. 4,4'-DDT |
| 7. aldrin | 18. endrin aldehyde |
| 8. heptachlor epoxide (isomer B) | 19. endosulfan sulfate |
| 9. γ -chlordane | 20. methoxychlor |
| 10. α -chlordane | 21. endrin ketone |
| 11. endosulfan I | 22. decachlorobiphenyl (SS) |

