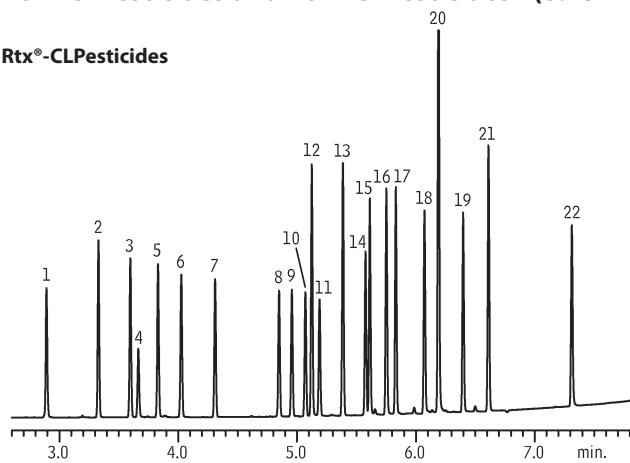


## Organochlorine Pesticide Mix AB #2

## US EPA Method 8081

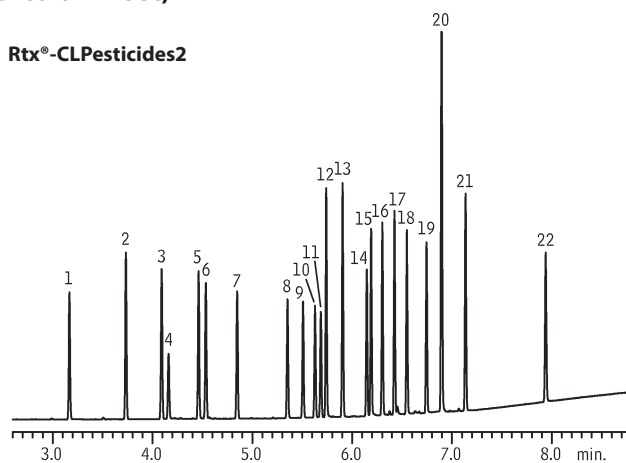
## Rtx®-CLPesticides and Rtx®-CLPesticides2 (0.25mm ID column set)

## Rtx®-CLPesticides



GC\_EV00940

## Rtx®-CLPesticides2



GC\_EV00941

Columns: Rtx®-CLPesticides, 30m, 0.25mm ID, 0.25 $\mu$ m (cat.# 11123) and Rtx®-CLPesticides2, 30m, 0.25mm ID, 0.20 $\mu$ m (cat.# 11323) with 5m x 0.25mm ID Rxi® deactivated guard tubing (cat.# 10029), connected using Siletek®-treated Universal "Y" Press-Tight® Connector (cat.# 20486)

Sample: Organochlorine Pesticide Mix AB #2, 8–80 $\mu$ g/mL each component in hexane/toluene (cat.# 32292), Pesticide Surrogate Mix, 200 $\mu$ g/mL each component in acetone (cat.# 32000)

Inj.: 0.5 $\mu$ L splitless (hold 0.5 min.), 2mm Cyclo Double Gooseneck inlet liner (cat.# 20908)

Inj. temp.: 250°C

Carrier gas: helium, constant flow

Linear velocity: 41cm/sec. @ 125°C

Oven temp.: 125°C to 200°C @ 45°C/min. to 230°C @ 12.5°C/min. to 330°C (hold 2 min.) @ 30°C/min.

Det.:  $\mu$ -ECD @ 330°C

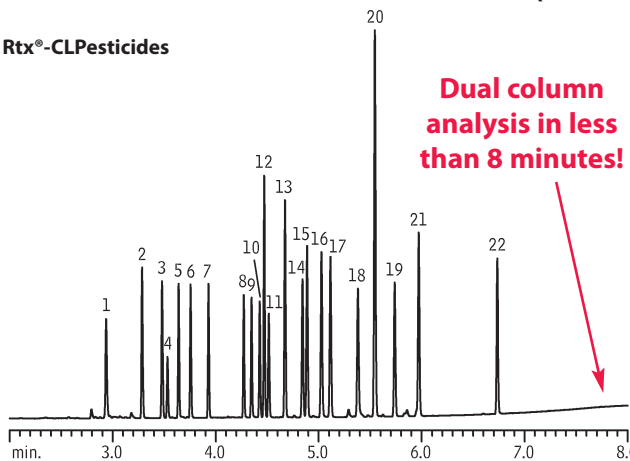
1. 2,4,5,6-tetrachloro- <i>m</i> -xylene (SS)	12. 4,4'-DDE
2. $\alpha$ -BHC	13. dieldrin
3. $\gamma$ -BHC	14. endrin
4. $\beta$ -BHC	15. 4,4'-DDD
5. $\delta$ -BHC	16. endosulfan II
6. heptachlor	17. 4,4'-DDT
7. aldrin	18. endrin aldehyde
8. heptachlor epoxide (isomer B)	19. endosulfan sulfate
9. $\gamma$ -chlordane	20. methoxychlor
10. $\alpha$ -chlordane	21. endrin ketone
11. endosulfan I	22. decachlorobiphenyl (SS)

## Organochlorine Pesticides

## US EPA Method 8081

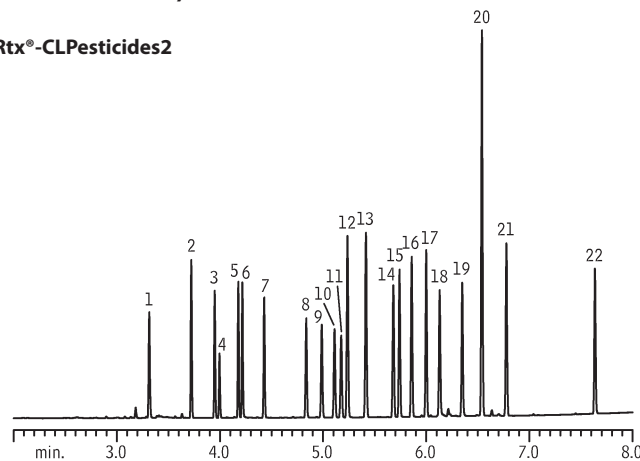
## Rtx®-CLPesticides and Rtx®-CLPesticides2 (0.18mm ID column set)

## Rtx®-CLPesticides



GC\_EV00892

## Rtx®-CLPesticides2



GC\_EV00893

Columns: Rtx®-CLPesticides, 20m, 0.18mm ID, 0.18 $\mu$ m (cat.# 42102) and Rtx®-CLPesticides2, 20m, 0.18mm ID, 0.14 $\mu$ m (cat.# 42302) with 5m x 0.53mm ID intermediate-polarity deactivated guard tubing (cat.# 10045), connected using SeCure® "Y" Connector Kit (cat.# 20276) with Universal "Y" Press-Tight® Connector

Sample: Organochlorine Pesticide Mix AB #2 (cat.# 32292), 8–80 $\mu$ g/mL each component in hexane/toluene, Pesticide Surrogate Mix (cat.# 32000), 200 $\mu$ g/mL each component in acetone

Inj.: 0.5 $\mu$ L splitless (hold 0.75 min.), 2mm single gooseneck inlet liner (cat.# 20796)

Inj. temp.: 250°C

Carrier gas: helium, constant flow

Linear velocity: 20cm/sec. @ 140°C

Oven temp.: 140°C (hold 1 min.) to 250°C @ 35°C/min. (hold 1 min.) to 330°C @ 35°C/min. (hold 3 min.)

Det.:  $\mu$ -ECD @ 350°C

1. 2,4,5,6-tetrachloro- <i>m</i> -xylene (SS)	12. 4,4'-DDE
2. $\alpha$ -BHC	13. dieldrin
3. $\gamma$ -BHC	14. endrin
4. $\beta$ -BHC	15. 4,4'-DDD
5. $\delta$ -BHC	16. endosulfan II
6. heptachlor	17. 4,4'-DDT
7. aldrin	18. endrin aldehyde
8. heptachlor epoxide	19. endosulfan sulfate
9. $\gamma$ -chlordane	20. methoxychlor
10. $\alpha$ -chlordane	21. endrin ketone
11. endosulfan I	22. decachlorobiphenyl (SS)