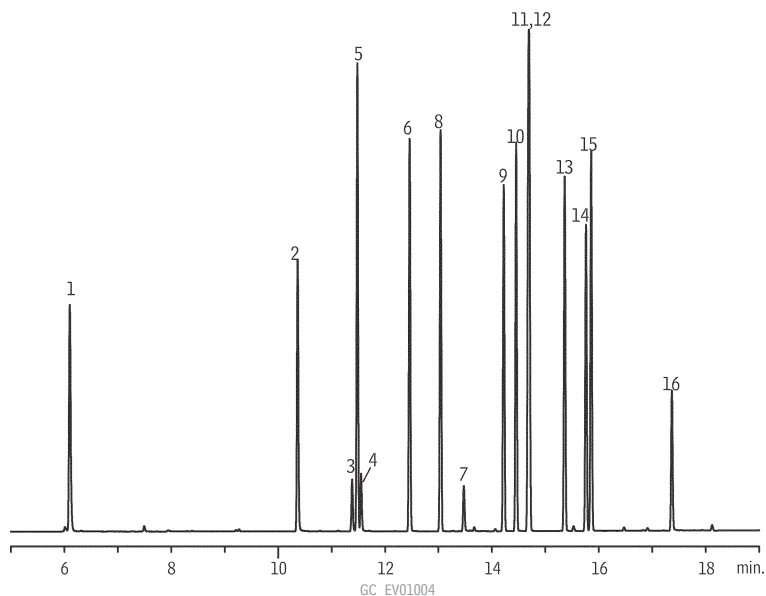


Pesticides & Herbicides
US EPA Method 505
Rtx®-CLPesticides & Rtx®-CLPesticides2

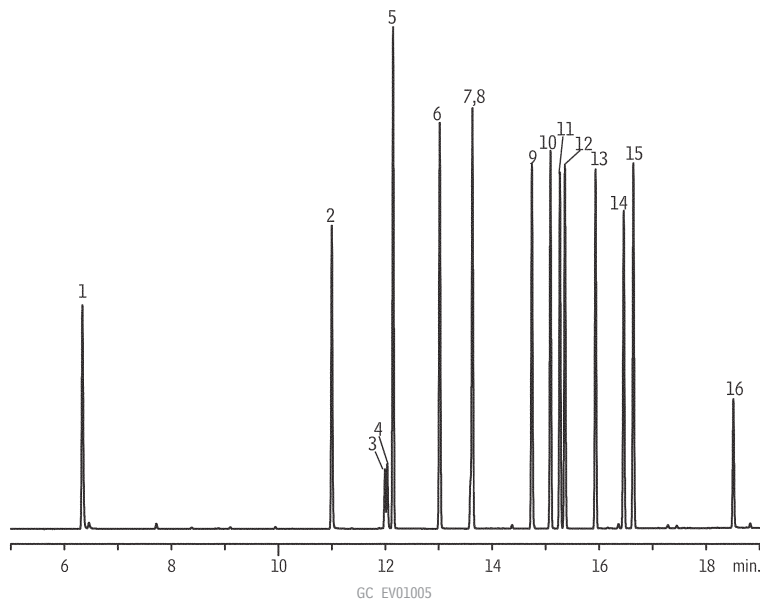


Rtx®-CLPesticides



1. hexachlorocyclopentadiene
2. hexachlorobenzene
3. simazine
4. atrazine
5. γ -BHC
6. heptachlor
7. alachlor
8. aldrin
9. heptachlor epoxide
10. γ -chlordane
11. *trans*-nonachlor
12. α -chlordane
13. dieldrin
14. endrin
15. *cis*-nonachlor
16. methoxychlor

Rtx®-CLPesticides2



Column: Rtx®-CLPesticides2, 30m, 0.32mm ID, 0.25 μ m (cat.# 11324) and Rtx®-CLPesticides, 30m, 0.32mm ID, 0.32 μ m (cat.# 11141) with 5m x 0.32mm ID Rxi® deactivated guard tubing (cat.# 10039), connected using Universal "Y" Press-Tight® Connector (cat.# 20405-261)

Sample: 200ng/mL 505 Organohalide Pesticide Mix (cat.# 32024), 4.2 μ g/mL Simazine (cat.# 32236), 4.2 μ g/mL Atrazine (cat.# 32208) in methanol

Inj.: 2 μ L splitless (hold 0.75 min.), 4mm cyclo double gooseneck liner (cat.# 20896)

Inj. temp.: 250°C

Carrier gas: helium, constant flow

Linear velocity: 40cm/sec. @ 90°C

Oven temp.: 90°C (hold 1 min.) to 310°C (hold 5 min.) @ 10°C/min.

Det. temp.: μ -ECD @ 325°C