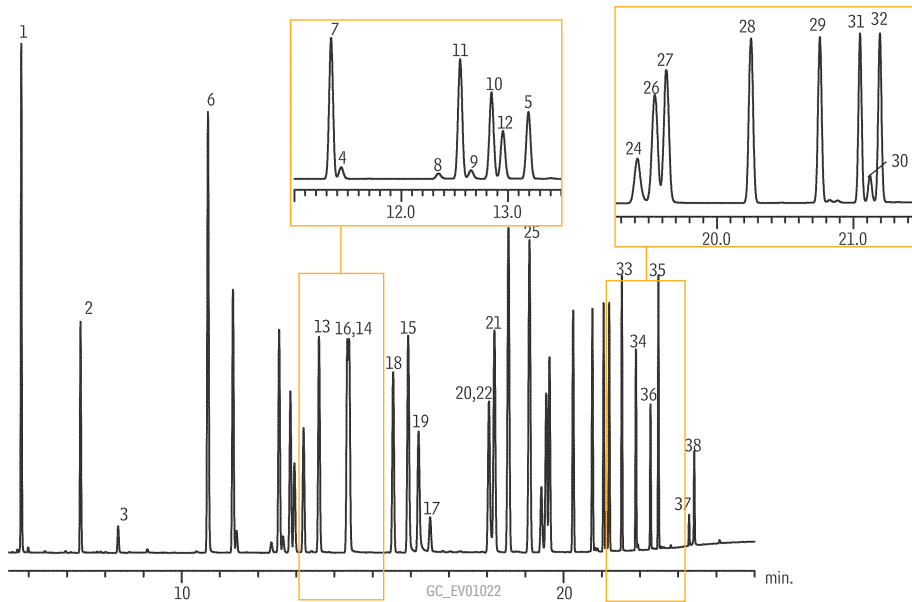


Pesticides & Herbicides

US EPA Method 508.1

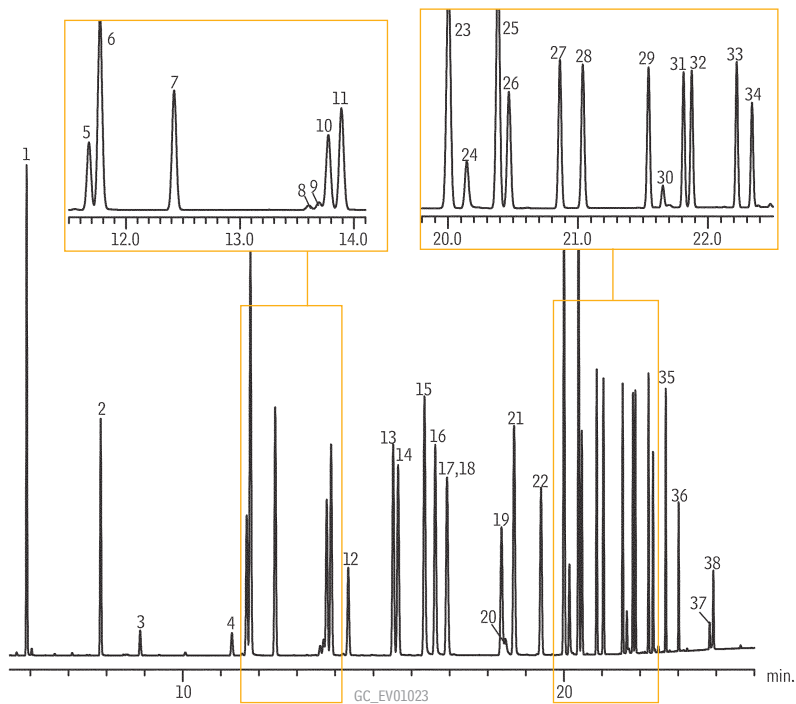
Rtx®-CLPesticides & Rtx®-CLPesticides2

Rtx®-CLPesticides



1. hexachlorocyclopentadiene
2. etridiazole
3. chloroneb
4. propachlor
5. trifluralin
6. hexachlorobenzene
7.  $\alpha$ -BHC
8. simazine
9. atrazine
10. pentachloronitrobenzene (IS)
11.  $\gamma$ -BHC
12.  $\beta$ -BHC
13.  $\delta$ -BHC
14. heptachlor
15. chlorothalonil
16. metribuzin
- 17.alachlor
18. aldrin
19. 4,4'-dibromobiphenyl (SS)
20. metachlor
21. DCPA
22. heptachlor epoxide
23.  $\gamma$ -chlordane
24. cyanazine
25.  $\alpha$ -chlordane
26. endosulfan I
27. 4,4'-DDE
28. dieldrin
29. endrin
30. chlorobenzilate
31. 4,4'-DDD
32. endosulfan II
33. 4,4'-DDT
34. endrin aldehyde
35. endosulfan sulfate
36. methoxychlor
37. *cis*-permethrin
38. *trans*-permethrin

Rtx®-CLPesticides2



Column: Rtx®-CLPesticides2, 30m, 0.32mm ID, 0.25 $\mu$ m (cat.# 11324) and Rtx®-CLPesticides, 30m, 0.32mm ID, 0.32 $\mu$ m (cat.# 11141) with 5m x 0.32mm ID Rxi® deactivated guard tubing (cat.# 10039), connected using Universal "Y" Press-Tight® Connector (cat.# 20405-261)

Sample: 50ng/mL 508.1 Calibration Mix #1 (cat.# 32094), 100ng/mL 508.1 Calibration Mix #2 (cat.# 32095), 100ng/mL 508.1 Calibration Mix #3 (cat.# 32096), 50ng/mL 508.1 Internal Standard (cat.# 32091), 250ng/mL 508.1 Surrogate (cat.# 32092), 500ng/mL Atrazine (cat.# 32208), 500ng/mL Simazine (cat.# 32236) in ethyl acetate

Inj.: 2 $\mu$ L splitless (hold 0.75 min.), 4mm cyclo double gooseneck liner (cat.# 20896)

Inj. temp.: 250°C  
Carrier gas: helium, constant flow  
Linear velocity: 26cm/sec. @ 80°C  
Oven temp.: 80°C (hold 0.5 min.) to 155°C (hold 1 min.) @ 19°C/min. to 210°C @ 4°C/min. to 310°C (hold 0.5 min.) @ 25°C/min.

Detector temp.:  $\mu$ -ECD @ 325°C