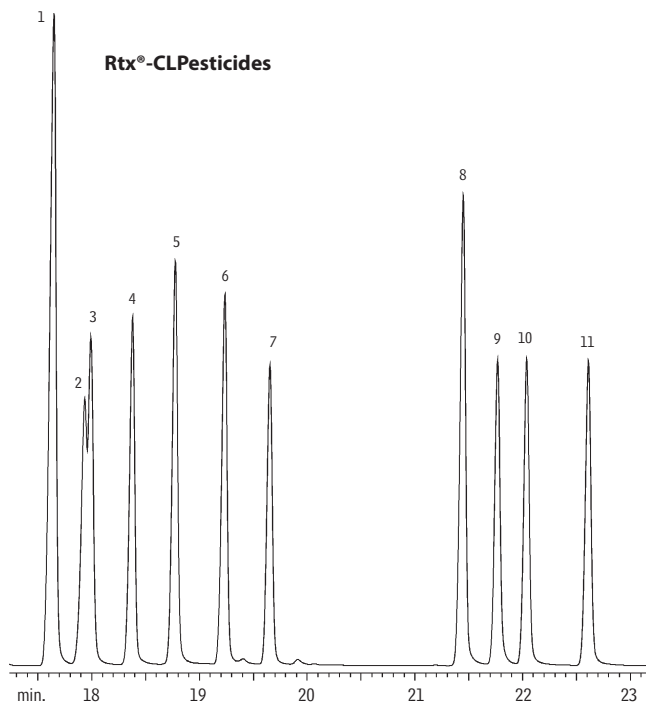


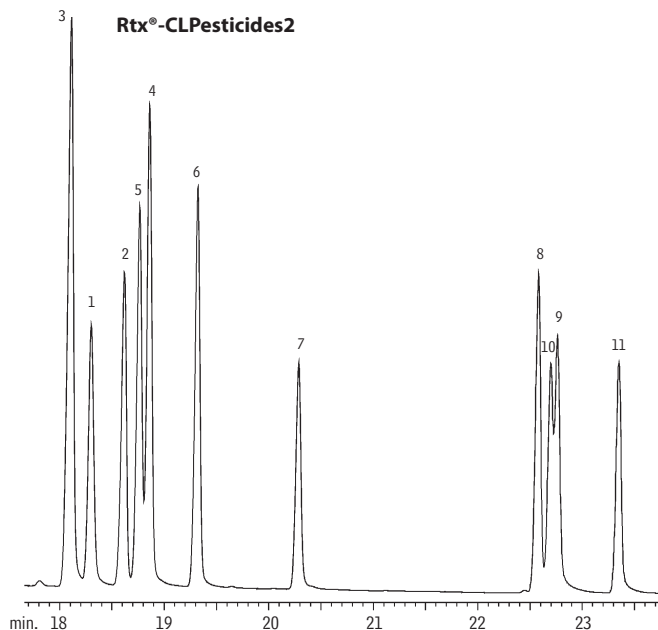
Nitrogen/Phosphorus Pesticides & Herbicides

US EPA Method 619

Rtx®-CLPesticides & Rtx®-CLPesticides2 (dual column analysis)



	CAS No.
1. prometon	1610-18-0
2. simazine	122-34-9
3. atraton	1610-17-9
4. propazine	139-40-2
5. atrazine	1912-24-9
6. terbuthylazine	5915-41-3
7. secbumeton	26259-45-0
8. simetryne	1014-70-6
9. ametryne	834-12-8
10. prometryne	7287-19-6
11. terbutryne	886-50-0



GC_EV00056

Columns: Rtx®-CLPesticides, 30m, 0.32mm ID, 0.50 μ m (cat.# 11139) and Rtx®-CLPesticides2, 30m, 0.32mm ID, 0.25 μ m (cat.# 11324) with a 5m, 0.32mm ID guard column (cat.# 10044) and a "Y" Press-Tight® connector (cat.# 20403)
 Inj.: Direct injection using a Uniliner® inlet liner (cat.# 20964) and adaptor for an Agilent 5890 (cat.#21303)
 Conc.: On-column, 50pg each compound
 Oven temp.: 100°C (hold 0 min.) to 250°C @ 4°C/min. (hold 5 min.)
 Inj./det. temp.: 250°C/275°C
 Carrier gas: hydrogen, 9.65psi constant pressure
 GC: Agilent 6890 with purged packed injection port
 Det: NPD