

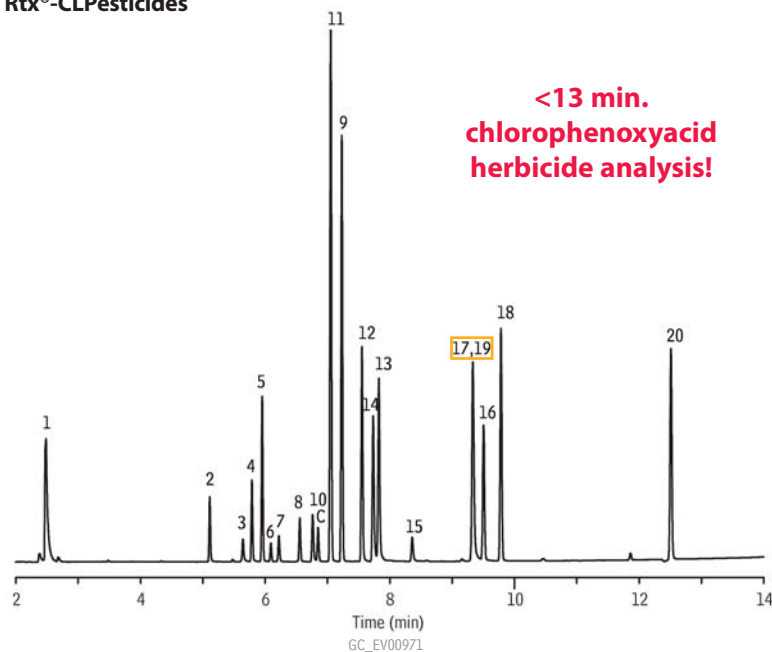
Herbicides

US EPA Method 8151A

Rtx®-CLPesticides & Rtx®-CLPesticides2



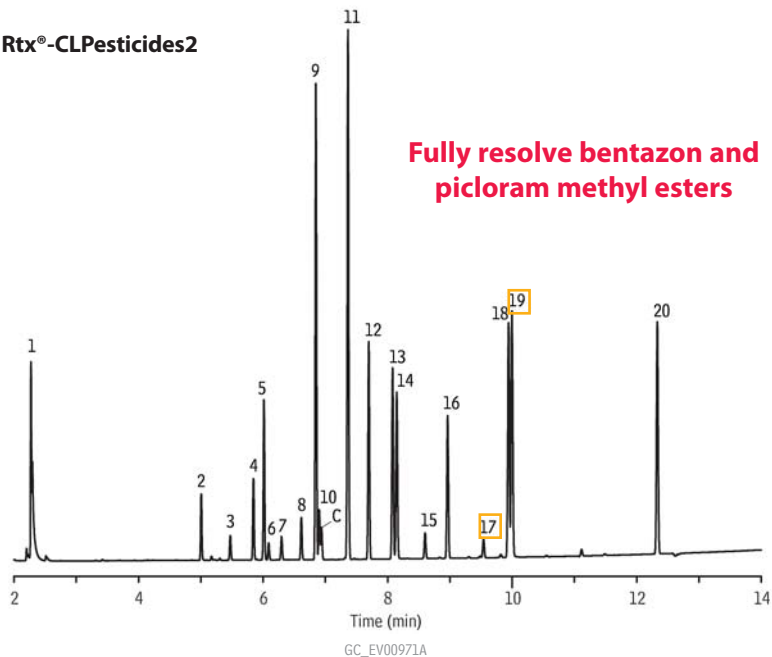
Rtx®-CLPesticides



<13 min.  
chlorophenoxyacid  
herbicide analysis!

1. dalapon methyl ester
2. 3,5-dichlorobenzoic acid methyl ester (SS)
3. 4-nitroanisole
4. DCAA methyl ester (SS)
5. dicamba methyl ester
6. MCPP methyl ester
7. MCPA methyl ester
8. dichlorprop methyl ester
9. 4,4'-DBOB (IS)
10. 2,4-D methyl ester
11. pentachloroanisole
12. 2,4,5-TP methyl ester
13. 2,4,5-T methyl ester
14. chloramben methyl ester
15. 2,4-DB methyl ester
16. dinoseb methyl ester
17. bentazon methyl ester
18. DCPA
19. picloram methyl ester
20. acifluorfen methyl ester
- C. contaminant

Rtx®-CLPesticides2



Fully resolve bentazon and  
picloram methyl esters

Column: Rtx®-CLPesticides2, 30m, 0.32mm ID, 0.25µm (cat.# 11324) and Rtx®-CLPesticides, 30m, 0.32mm ID, 0.32µm (cat.# 11141), with 5m x 0.32mm ID Rxi® deactivated guard tubing (cat.# 10039), connected using Deactivated Universal "Y" Press-Tight® Connector (cat.# 20405-261)

Sample: 200ng/mL Herbicide Mix #1 (cat.# 32055) in hexane  
1,000ng/mL Herbicide Mix #2 (cat.# 32057) in hexane  
20,000ng/mL Herbicide Mix #3 (cat.# 32059) in hexane  
200ng/mL Herbicide Mix #4 (cat.# 32062) in hexane  
250ng/mL Herbicide Internal Standard (cat.# 32053) in hexane  
400ng/mL Herbicide Surrogate (cat.# 32050) in hexane

Inj.: 1.0µL splitless (hold 0.75 min.),  
4mm Cyclo Double Gooseneck inlet liner (cat.# 20895)

Inj. temp.: 250°C  
Carrier gas: helium, constant pressure  
Flow rate: 36cm/sec. @ 70°C  
Oven temp.: 70°C (hold 0.5 min.) to 190°C @ 25°C/min. (hold 1 min.) to 300°C @ 11°C/min. (hold 5 min.)  
Det.: µ-ECD @ 325°C

