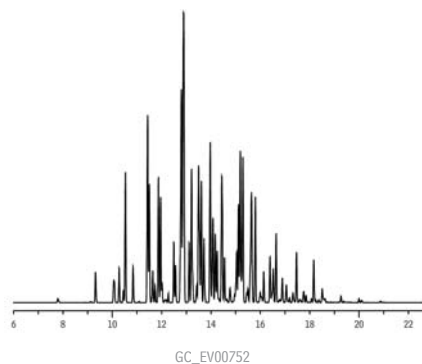
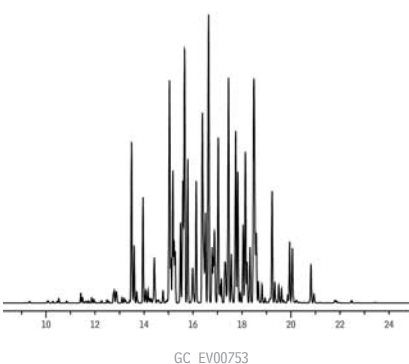


Aroclor 1242 PCBs
Rtx®-PCB



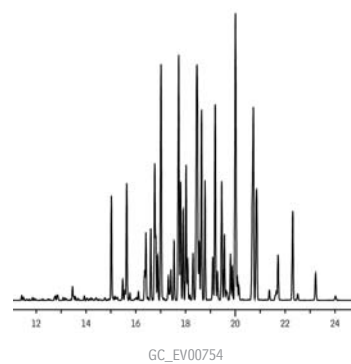
Sample: 200ng/mL Aroclor 1242 (cat.# 32009)

Aroclor 1254 PCBs
Rtx®-PCB



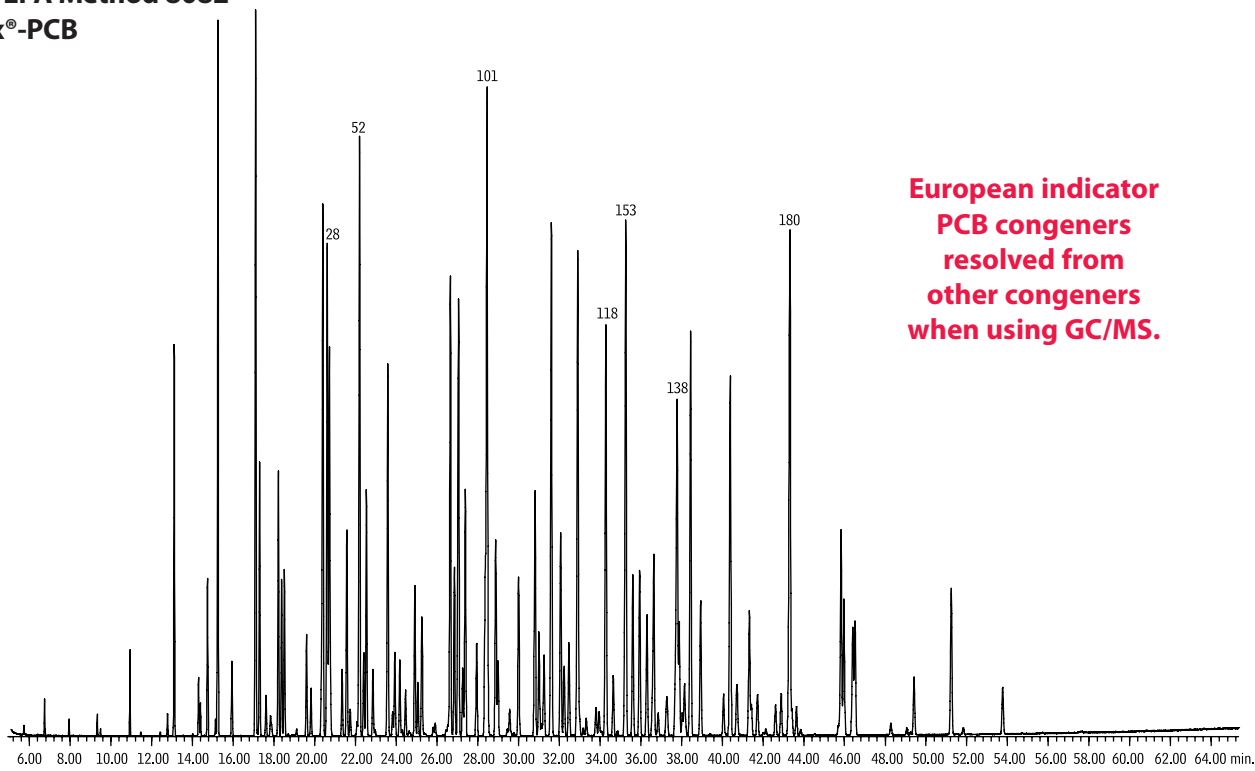
Sample: 200ng/mL Aroclor 1254 (cat.# 32011)
Column: Rtx®-PCB, 30m, 0.25mm ID, 0.25µm (cat.# 13223)
Inj.: 1.0µL splitless (hold 0.75 min.), 3.5mm ID single gooseneck inlet liner (cat.# 20962)
Inj. temp.: 250°C
Carrier gas: hydrogen, constant pressure
Linear velocity: 71cm/sec. @ 110°C
Oven temp.: 100°C (hold 1.0 min.) to 300°C @ 10°C/min. (hold 4 min.)
Det.: ECD @ 310°C

Aroclor 1260 PCBs
Rtx®-PCB



Sample: 200ng/mL Aroclor 1260 (cat.# 32012)

Aroclor 1242/1254/1262 PCBs
US EPA Method 8082
Rtx®-PCB



**European indicator
PCB congeners
resolved from
other congeners
when using GC/MS.**

Column: Rtx®-PCB, 60m, 0.25mm ID, 0.25µm (cat.# 13226)
Sample: Aroclor 1242 (cat.# 32009), 1254 (cat.# 32011), 1262 (cat.# 32409), 333ppm each
Inj.: 1.0µL splitless (hold 0.75 min.), 4mm single gooseneck inlet liner w/wool (cat.# 22405)
Inj. temp.: 280°C
Carrier gas: helium, constant flow
Flow rate: 1.1mL/min.
Oven temp.: 100°C (hold 1 min.) to 200°C @ 30°C/min., to 320°C @ 2°C/min. (hold 1 min.)
Det.: MS
Transfer line temp.: 280°C
Scan range: 50 to 550amu
Ionization: EI
Mode: scan