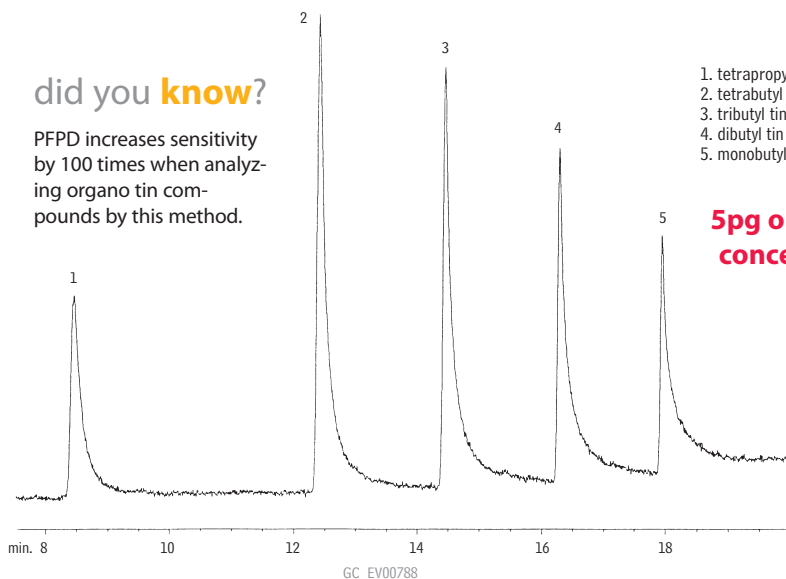


Organo Tins
Rtx®-35

did you know?

PFPD increases sensitivity by 100 times when analyzing organo tin compounds by this method.



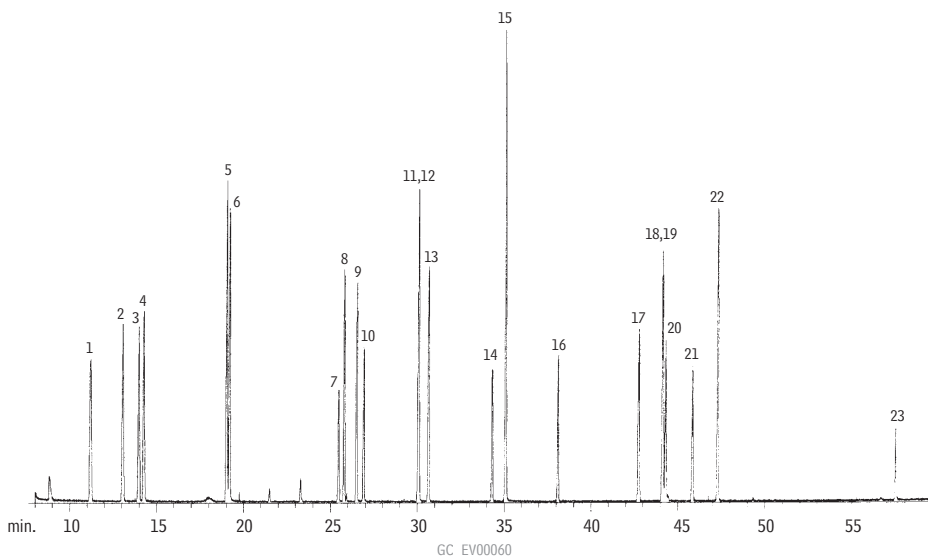
- 1. tetrapropyl tin
- 2. tetrabutyl tin
- 3. tributyl tin
- 4. dibutyl tin
- 5. monobutyl tin

5pg on-column concentration

Column: Rtx®-35, 30m, 0.32mm ID, 1.0µm (cat.# 10454)
 Inj.: direct injection using a Uniliner® inlet liner (cat.# 20335)
 Conc.: 5pg on-column
 Head pressure: 15psi, constant
 Oven temp.: 100°C (hold 1 min.) to 285°C @ 10°C/min. (hold 10 min.)
 Detector: PFPD* Model 5380 courtesy of O.I. Analytical Corp., College Station, TX

*Peak tailing is a function of this detector.

Explosives
Rtx®-200



Column: Rtx®-200, 30m, 0.25mm ID, 0.25µm (cat.# 15023)
 Inj.: 1.0µL splitless injection
 Conc.: 20ng/µL
 Oven temp.: 80°C (hold 2 min.) to 260°C @ 3°C/min. (hold 2 min.)
 Inj. temp.: 280°C
 Det.: MS, 300°C
 Carrier gas: helium
 Linear velocity: 20cm/sec. set @ 80°C
 Splitless hold time: 0.6 min.

- 1. 2-nitrotoluene
- 2. 3-nitrotoluene
- 3. 4-nitrotoluene
- 4. 2,3-diaminotoluene
- 5. 2,6-diaminotoluene
- 6. 2,4-diaminotoluene
- 7. 1,4-dinitrobenzene
- 8. 2,6-dinitrotoluene
- 9. 2-amino-6-nitrotoluene
- 10. 1,3-dinitrobenzene
- 11. 2,4-dinitrotoluene
- 12. 2-amino-4-nitrotoluene
- 13. 2,3-dinitrotoluene
- 14. 3,4-dinitrotoluene
- 15. 3-nitrobiphenyl
- 16. 2,4,6-trinitrotoluene
- 17. 2,4,5-trinitrotoluene
- 18. 4-amino-2,6-dinitrotoluene
- 19. 2,3,4-trinitrotoluene
- 20. 1,3-dinitronaphthalene
- 21. 2,6-diamino-4-nitrotoluene
- 22. 2-amino-4,6-dinitrotoluene
- 23. 2,2-dinitrobiphenyl