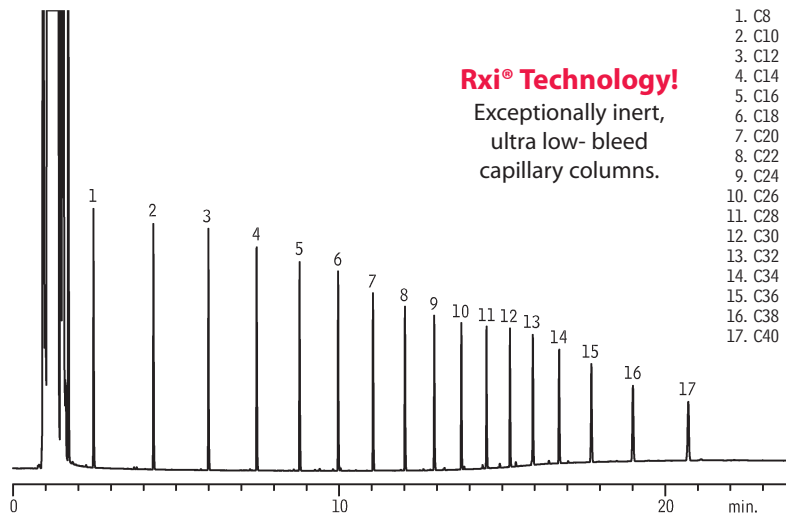


Petroleum Hydrocarbons (TPH)

Rxi®-1ms



Rxi® Technology!

Exceptionally inert,
ultra low- bleed
capillary columns.

1. C8
2. C10
3. C12
4. C14
5. C16
6. C18
7. C20
8. C22
9. C24
10. C26
11. C28
12. C30
13. C32
14. C34
15. C36
16. C38
17. C40

GC_EV00886

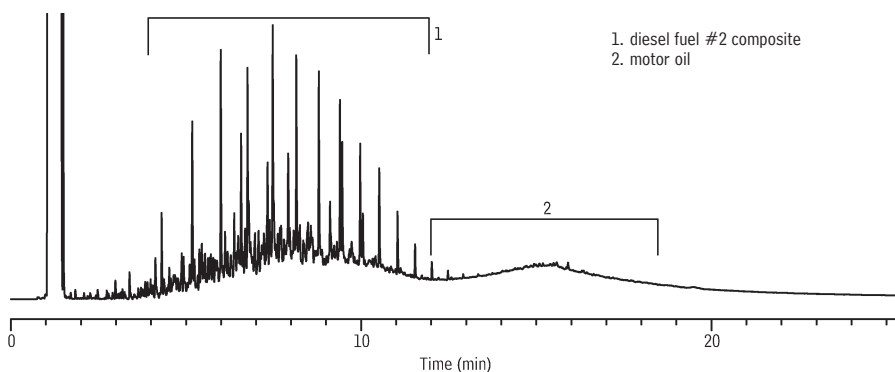
Column: Rxi®-1ms, 20m, 0.18mm ID, 0.18µm (cat.# 13302)
 Sample: Florida TRPH Standard (cat.# 31266), 500µg/mL each component in hexane
 Inj.: 0.5µL, split, split ratio 20:1, 3.5mm Precision® inlet liner (cat.# 21021)
 Instrument: Shimadzu GC-2010*
 Inj. temp.: 275°C
 Carrier gas: hydrogen, constant pressure
 Linear velocity: 55cm/sec. @ 40°C
 Oven temp.: 40°C (hold 1 min.) to 330°C @ 20°C/min. (hold 10 min.)
 Det.: FID @ 350°C

*GC courtesy of Shimadzu Scientific.

Lubrication Range Organics

Diesel Fuel #2/Motor Oil

Rxi®-1ms



Rxi® Technology!

Exceptionally inert,
ultra low- bleed
capillary columns.

1. diesel fuel #2 composite
2. motor oil

GC_EV00887

Column: Rxi®-1ms, 20m, 0.18mm ID, 0.18µm (cat.# 13302)
 Sample: Diesel #2/Motor Oil (cat.# 31682) 5,000µg/mL each component in hexane
 Inj.: 0.5µL, split, split ratio 20:1, 3.5mm Precision® inlet liner (cat.# 21021)
 Instrument: Shimadzu GC-2010
 Inj. temp.: 275°C
 Carrier gas: hydrogen, constant pressure
 Linear velocity: 55cm/sec. @ 40°C
 Oven temp.: 40°C (hold 1 min.) to 330°C @ 20°C/min. (hold 10 min.)
 Det.: FID @ 350°C