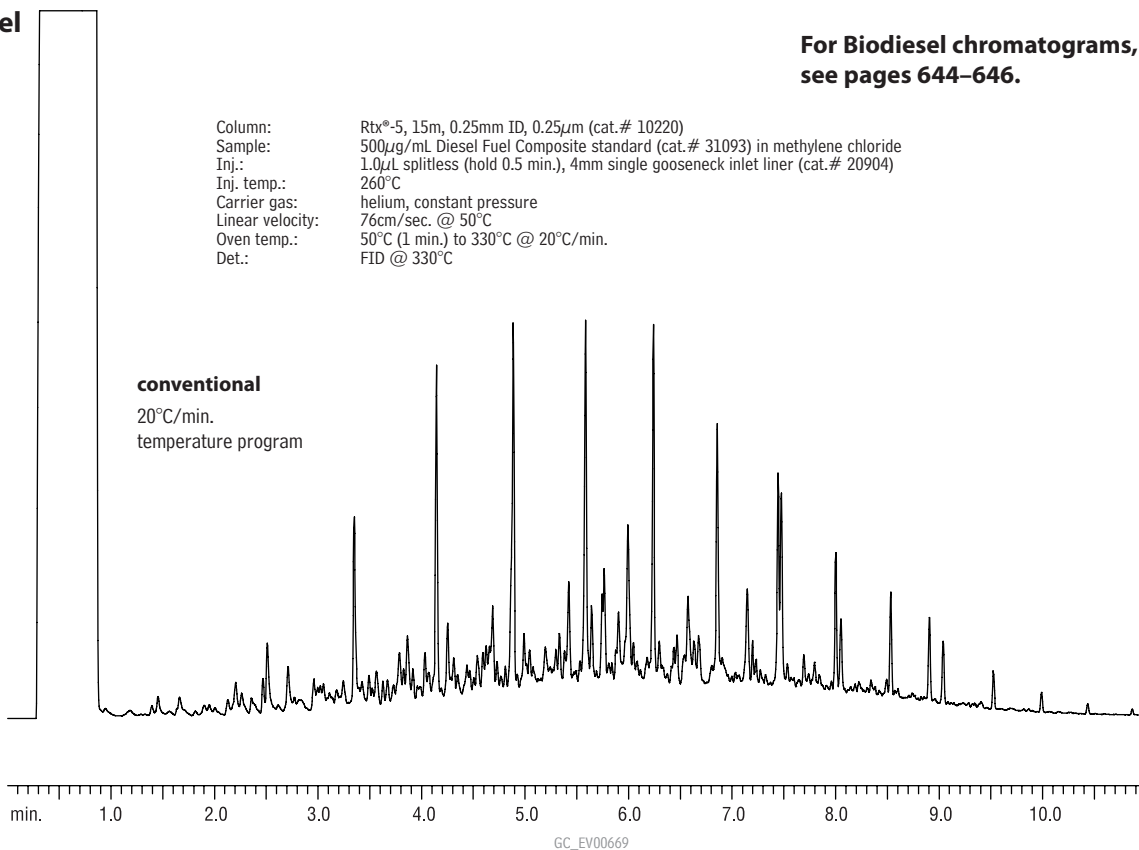


Diesel Fuel  
 Rtx®-5

For Biodiesel chromatograms,  
 see pages 644–646.

Column: Rtx®-5, 15m, 0.25mm ID, 0.25µm (cat.# 10220)  
 Sample: 500µg/mL Diesel Fuel Composite standard (cat.# 31093) in methylene chloride  
 Inj.: 1.0µL splitless (hold 0.5 min.), 4mm single gooseneck inlet liner (cat.# 20904)  
 Inj. temp.: 260°C  
 Carrier gas: helium, constant pressure  
 Linear velocity: 76cm/sec. @ 50°C  
 Oven temp.: 50°C (1 min.) to 330°C @ 20°C/min.  
 Det.: FID @ 330°C



DRO Mix  
 Rtx®-5

1. C10
2. C12
3. C14
4. C16
5. C18
6. C20
7. C22
8. C24
9. C26
10. C28

Column: Rtx®-5, 30m, 0.53mm ID, 1.0µm (cat.# 10255)  
 Sample: Direct injection of DRO Mix (cat.# 31064)  
 Conc.: 50ng/µL  
 Oven temp.: 40°C (hold 2 min.) to 310°C @ 12°C/min. (hold 10 min.)  
 Inj./det. temp.: 280°C/310°C  
 Carrier gas: helium @ 65cm/sec.  
 FID sensitivity: 8 x 10<sup>-11</sup> AFS

