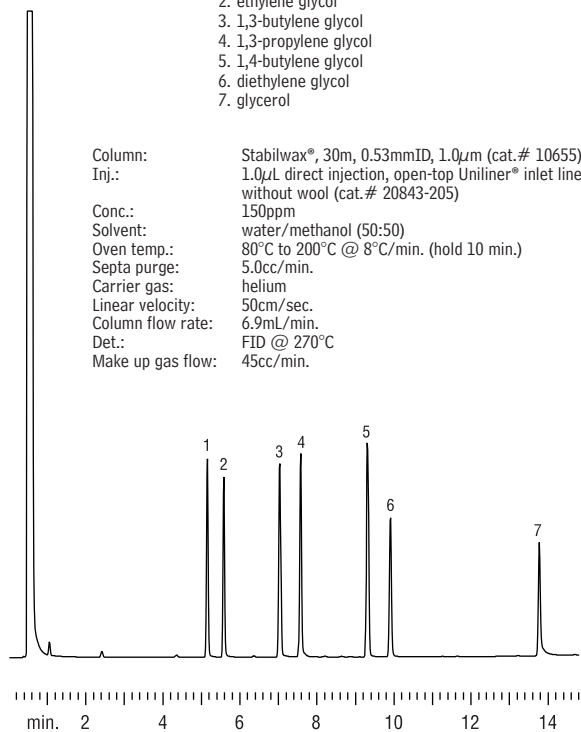


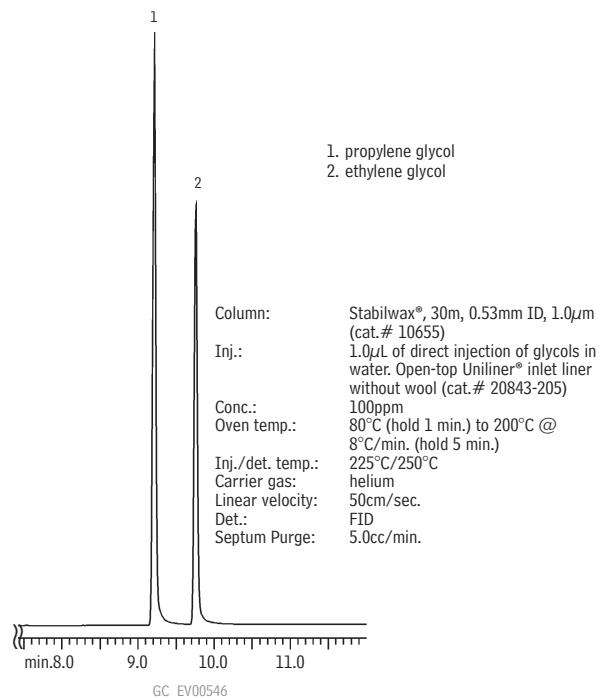
Glycols

Glycols
Stabilwax®

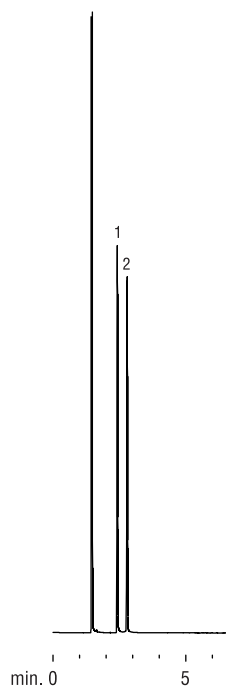
1. 1,2-propylene glycol
2. ethylene glycol
3. 1,3-butylene glycol
4. 1,3-propylene glycol
5. 1,4-butylene glycol
6. diethylene glycol
7. glycerol

Glycols
Stabilwax®

1. propylene glycol
2. ethylene glycol

Glycols
Rtx®-BAC1 & Rtx®-BAC2

Rtx®-BAC1



1. ethylene glycol
2. propylene glycol

Columns: Rtx®-BAC1, 30m, 0.32mm ID, 1.8µm (cat.# 18003)
 Rtx®-BAC2, 30m, 0.32mm ID, 1.2µm (cat.# 18002)
 Inj.: 0.5µL split injection
 Conc.: 1%
 Solvent: methanol
 Oven temp.: 100°C to 240°C @ 5°C/min. (hold 5 min.)
 Inj. temp.: 240°C
 Inj. mode: 100:1 split
 Inlet liner: 4mm single gooseneck (cat.# 20798)
 Septa purge: 5.0cc/min.
 Carrier gas: helium, constant pressure
 Pressure: 12psi
 Linear velocity: 37cm/sec.
 Column flow rate: 2.1mL/min.
 Det.: FID @ 240°C
 Make-up gas flow: 40cc/min.

Rtx®-BAC2

