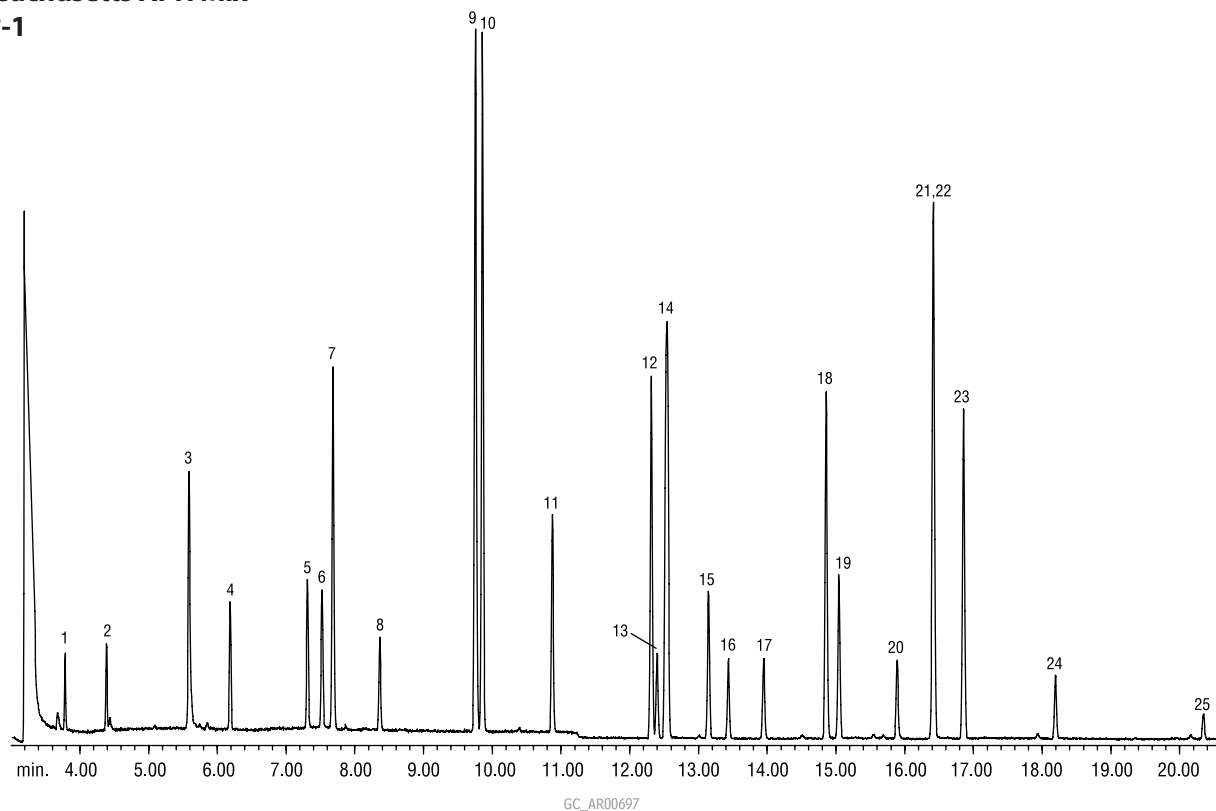


Massachusetts APH Mix

Rtx®-1



Column: Rtx®-1, 60m, 0.32mm ID, 1.0 μ m (cat.# 10157)
 Sample: Massachusetts APH Mix, (cat.# 34540)
 Concentrator: Nutech 3550A Air Preconcentrator, 100mL of a 40ppbv standard concentrated at -160°C, thermally desorbed at 150°C and cryofocused at -185°C
 Carrier gas: helium
 Flow rate: 1mL/min.
 Oven temp.: 35°C (hold 1 min.) to 220°C @ 8°C/min.
 Det: MS, Agilent 5971
 Transfer line temp.: 250°C
 Scan range: 35-280amu
 Ionization: EI
 Mode: scan

1. 1,3-butadiene
 2. isopentane
 3. methyl *tert*-butyl ether
 4. hexane
 5. benzene
 6. cyclohexane
 7. 2,3-dimethylpentane
 8. heptane
 9. toluene-D8
 10. toluene
 11. octane
 12. ethylbenzene
 13. 2,3-dimethylheptane

14a. *m*-xylene
 14b. *p*-xylene
 15. *o*-xylene
 16. nonane
 17. isopropylbenzene
 18. 1-methyl-3-ethylbenzene
 19. 1,3,5-trimethylbenzene
 20. decane
 21. 1,2,3-trimethylbenzene
 22. *p*-isopropyltoluene
 23. butylcyclohexane
 24. undecane
 25. dodecane

