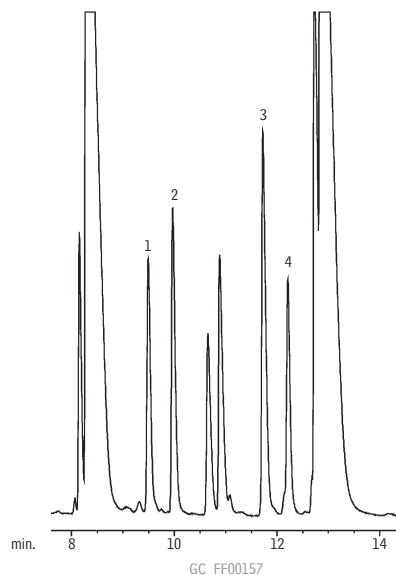
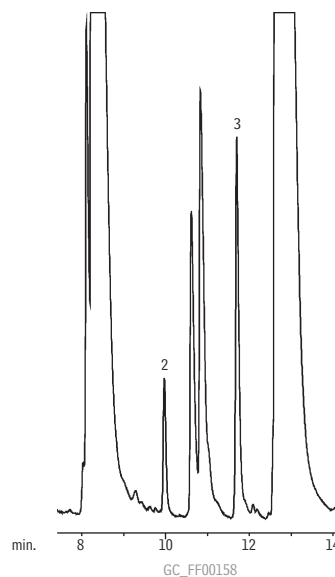


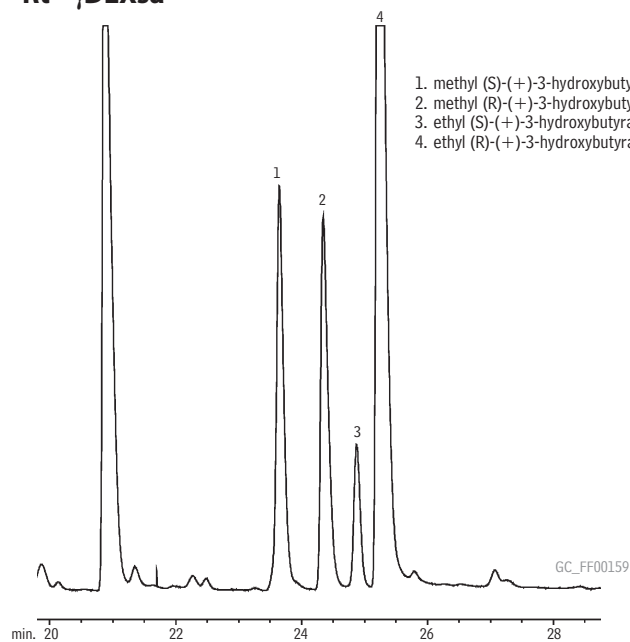
Chiral Separations

Apple Juice with Standards
Rt®-βDEXse

1. (R)-ethyl 2-methylbutyrate
2. (S)-ethyl 2-methylbutyrate
3. (R)-2-methylbutyrate
4. (S)-2-methylbutyrate

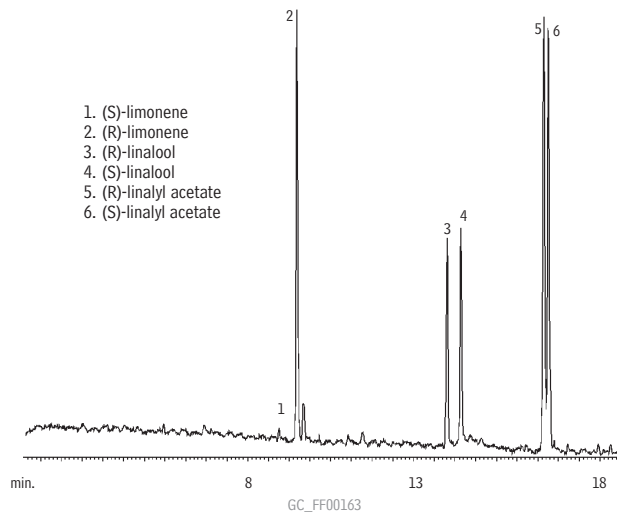
Apple Juice
Rt®-βDEXse

Column: Rt®-βDEXse, 30m, 0.32mm ID, 0.25μm (cat.# 13106)
 Inj.: 1.0μL split injection
 On-column conc. (standards): ~50ng
 Oven temp.: 40°C (hold 1 min.) to 220°C @ 2°C/min.
 Inj./det. temp.: 220°C
 Carrier gas: hydrogen
 Linear velocity: 80cm/sec.

Grape Juice Extract
Rt®-γDEXsa

1. methyl (S)-(+)-3-hydroxybutyrate
2. methyl (R)-(+)-3-hydroxybutyrate
3. ethyl (S)-(+)-3-hydroxybutyrate
4. ethyl (R)-(+)-3-hydroxybutyrate

Column: Rt®-γDEXsa, 30m, 0.32mm ID, 0.25μm (cat.# 13112)
 Inj.: 1.0μL split injection
 On-column conc.: ~150ng/enantiomer
 Oven temp.: 40°C (hold 1 min.) to 200°C @ 2°C/min.
 Inj./det. temp.: 220°C/230°C
 Carrier gas: hydrogen
 Linear velocity: 80cm/sec. set @ 40°C
 Split ratio: 25:1

Bergamot Flavor
Rt®-βDEXse

1. (S)-limonene
2. (R)-limonene
3. (R)-linalool
4. (S)-linalool
5. (R)-linalyl acetate
6. (S)-linalyl acetate

Column: Rt®-βDEXse, 30m, 0.32mm ID, 0.25μm (cat.# 13106)
 Oven temp.: 40°C (hold 1 min.) to 200°C @ 4°C/min.
 Carrier gas: helium, 60cm/sec. set @ 40°C
 Det.: MS @ 220°C