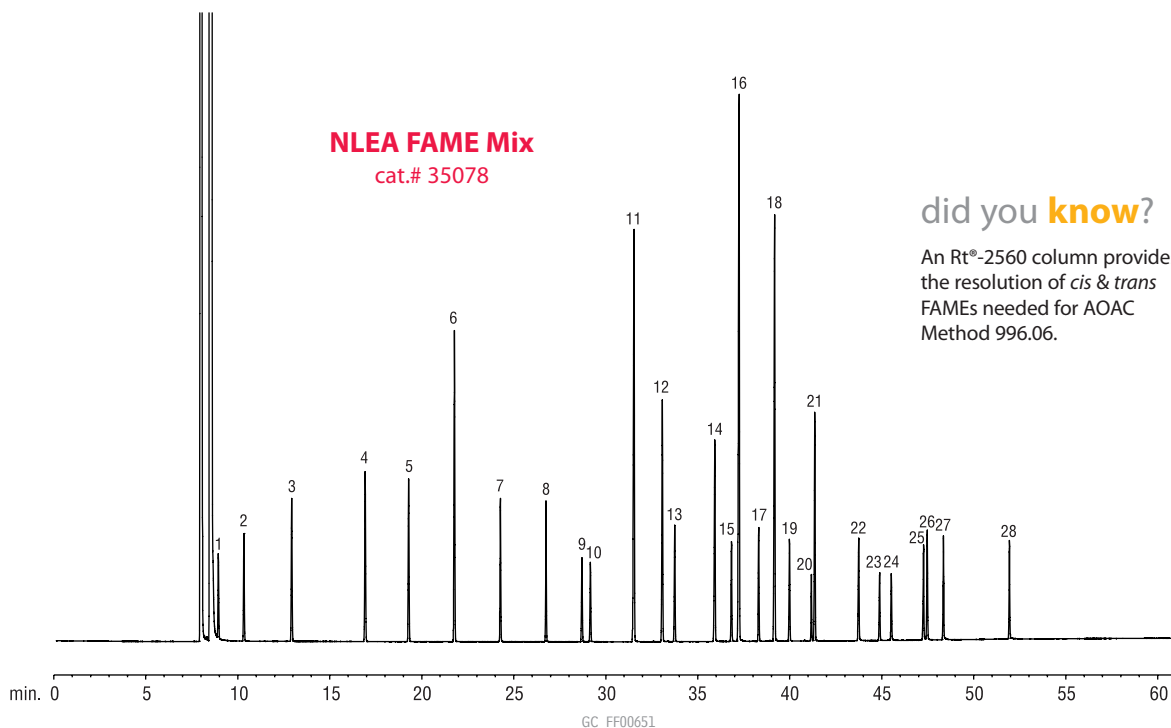


FAMEs

FAMEs (NLEA Mix)

Rt®-2560



Column: Rt®-2560, 100m, 0.25mm ID, 0.20 μ m (cat.# 13199)
 Sample: NLEA FAME Mix (cat.# 35078), 30mg/mL
 total FAMEs in methylene chloride
 Inj.: 1.0 μ L split (split ratio 100:1),
 4mm inlet liner (cat.# 20814)
 Inj. temp.: 225°C
 Carrier gas: hydrogen, constant flow
 Flow rate: 1.2mL/min.
 Oven temp.: 100°C (4 min. hold) to 240°C @ 3°C/min. (10 min. hold)
 Det.: FID @ 250°C

- | | | |
|---|---|--|
| 1. C4:0 methyl butyrate | 11. C16:0 methyl palmitate | 21. C18:3 methyl linolenate (<i>cis</i> -9,12,15) |
| 2. C6:0 methyl hexanoate | 12. C16:1 methyl palmitleate (<i>cis</i> -9) | 22. C22:0 methyl behenate |
| 3. C8:0 methyl octanoate | 13. C17:0 methyl heptadecanoate | 23. C22:1 methyl erucate (<i>cis</i> -13) |
| 4. C10:0 methyl decanoate | 14. C18:0 methyl stearate | 24. C23:0 methyl tricosanoate |
| 5. C11:0 methyl undecanoate | 15. C18:1 methyl elaidate (<i>trans</i> -9) | 25. C24:0 methyl lignocerate |
| 6. C12:0 methyl laurate | 16. C18:1 methyl oleate (<i>cis</i> -9) | 26. C20:5 methyl eicosapentaenoate (<i>cis</i> -5,8,11,14,17) |
| 7. C13:0 methyl tridecanoate | 17. C18:2 methyl linoelaidate (<i>trans</i> -9,12) | 27. C24:1 methyl nervonate (<i>cis</i> -15) |
| 8. C14:0 methyl myristate | 18. C18:2 methyl linoleate (<i>cis</i> -9,12) | 28. C22:6 methyl docosahexaenoate (<i>cis</i> -4,7,10,13,16,19) |
| 9. C14:1 methyl myristoleate (<i>cis</i> -9) | 19. C20:0 methyl arachidate | |
| 10. C15:0 methyl pentadecanoate | 20. C20:1 methyl eicosenoate (<i>cis</i> -11) | |

Chromatogram Search Tool

Search by compound name, synonym,
CAS # or keyword

www.restek.com/chromatograms

