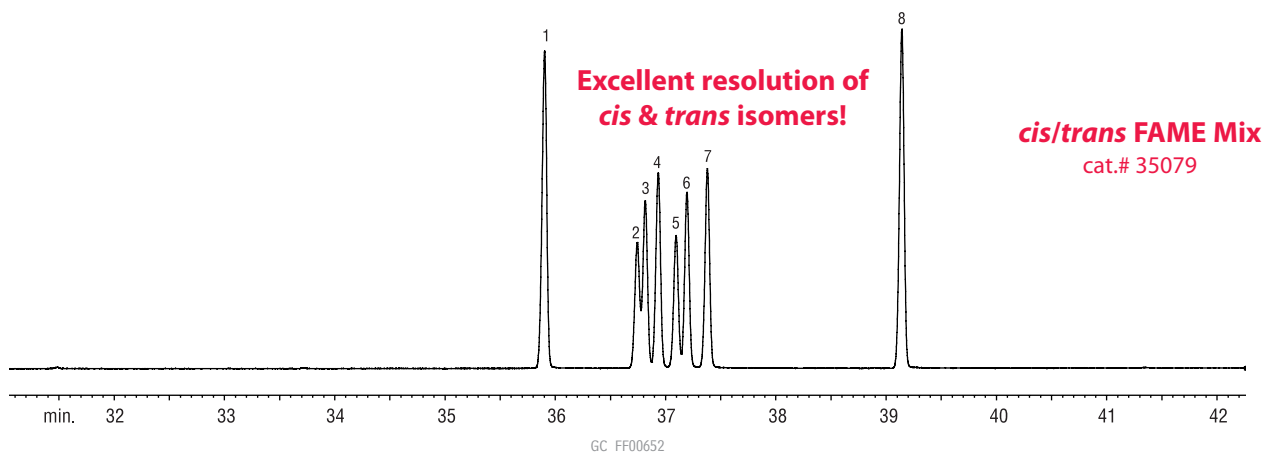


FAMES (*cis/trans* isomers)

Rt®-2560

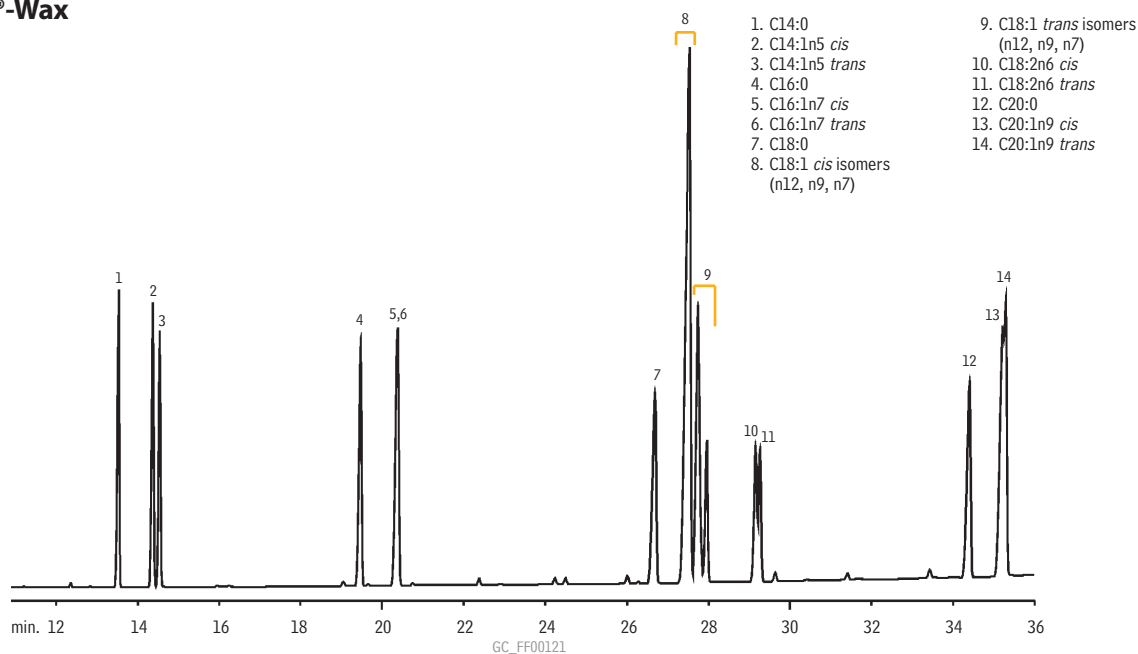


Column: Rt®-2560, 100m, 0.25mm ID, 0.2 μ m (cat.# 13199)
 Sample: *cis/trans* FAME Mix (cat.# 35079), 10mg/mL total FAMES in methylene chloride
 Inj.: 1.0 μ L split (split ratio 20:1), 4mm inlet liner (cat.# 20814)
 Inj. temp.: 225°C
 Carrier gas: hydrogen, constant flow
 Flow rate: 1.2mL/min.
 Oven temp.: 100°C (4 min. hold) to 240°C @ 3°C/min. (10 min. hold)
 Det.: FID @ 250°C

Compound	% in Mix
1. C18:0 methyl stearate	20.0
2. C18:1 methyl petroselaidate (<i>trans</i> -6)	8.0
3. C18:1 methyl elaidate (<i>trans</i> -9)	10.0
4. C18:1 methyl transvacenate (<i>trans</i> -11)	12.0
5. C18:1 methyl petroselinate (<i>cis</i> -6)	8.0
6. C18:1 methyl oleate (<i>cis</i> -9)	10.0
7. C18:1 methyl vacenate (<i>cis</i> -11)	12.0
8. C18:2 methyl linoleate (<i>cis</i> -9,12)	20.0

FAMES (*cis/trans* isomers)

Rtx®-Wax



Column: Rtx®-Wax, 60m, 0.25mm ID, 0.25 μ m (cat.#12426)
 On-column conc.: 40–75ng
 Oven temp.: 165°C to 250°C @ 2°C/min.
 Inj./det. temp.: 220°C/250°C
 Carrier gas: helium
 Linear velocity: 20cm/sec. set @ 165°C
 Split ratio: 50:1