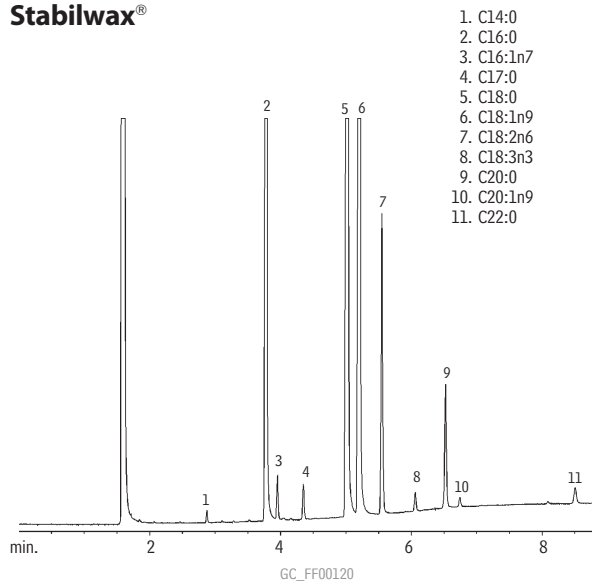


FAMES (Cocoa Butter)

Stabilwax®

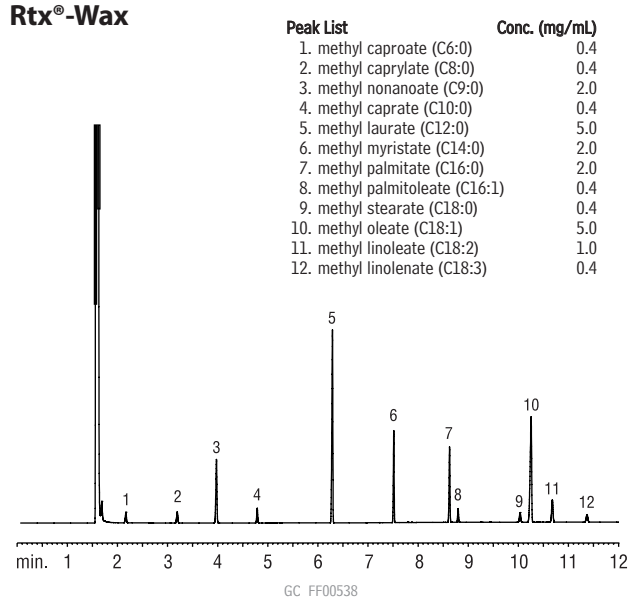


1. C14:0
2. C16:0
3. C16:1n7
4. C17:0
5. C18:0
6. C18:1n9
7. C18:2n6
8. C18:3n3
9. C20:0
10. C20:1n9
11. C22:0

Column: Stabilwax®, 30m, 0.25mm ID, 0.25µm (cat.# 10623)
 Sample: 1.0µL split injection of a FAME reference standard for cocoa butter.
 Oven temp.: 200°C to 250°C @ 8°C/min. (hold 3 min.)
 Inj./det. temp.: 250°C
 Carrier gas: hydrogen
 Linear velocity: 31.4cm/sec. set @ 200°C
 FID sensitivity: 8 x 10⁻¹¹ AFS
 Split ratio: 45:1

FAMES (Saw Palmetto)

Rtx®-Wax

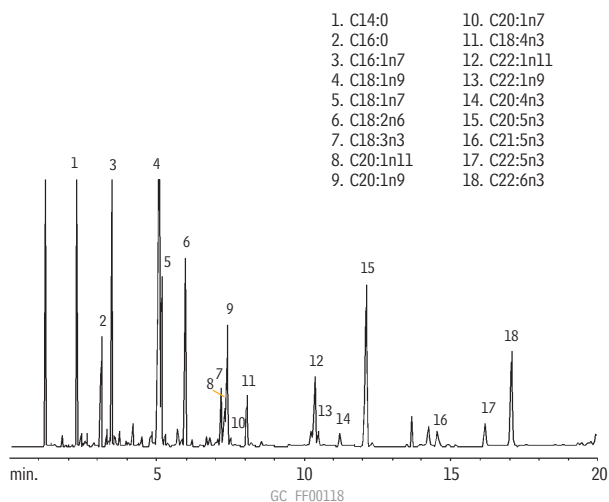


Peak List	Conc. (mg/mL)
1. methyl caproate (C6:0)	0.4
2. methyl caprylate (C8:0)	0.4
3. methyl nonanoate (C9:0)	2.0
4. methyl caprate (C10:0)	0.4
5. methyl laurate (C12:0)	5.0
6. methyl myristate (C14:0)	2.0
7. methyl palmitate (C16:0)	2.0
8. methyl palmitoleate (C16:1)	0.4
9. methyl stearate (C18:0)	0.4
10. methyl oleate (C18:1)	5.0
11. methyl linoleate (C18:2)	1.0
12. methyl linolenate (C18:3)	0.4

Column: Rtx®-Wax, 30m, 0.25mm, 0.25µm (cat.# 12423)
 Sample: 1µL split injection of saw palmetto standard
 Conc.: see peak list
 Oven temp.: 120°C (hold 3 min.) to 220°C
 at 20°C/min. (hold 12 min.)
 Inj./det. temp.: 250°C/300°C
 Carrier gas: helium
 Linear velocity: 1mL/min. (34 cm/sec.)
 Split ratio: 100:1

FAMES (PUFA, marine source)

Rt®-2330

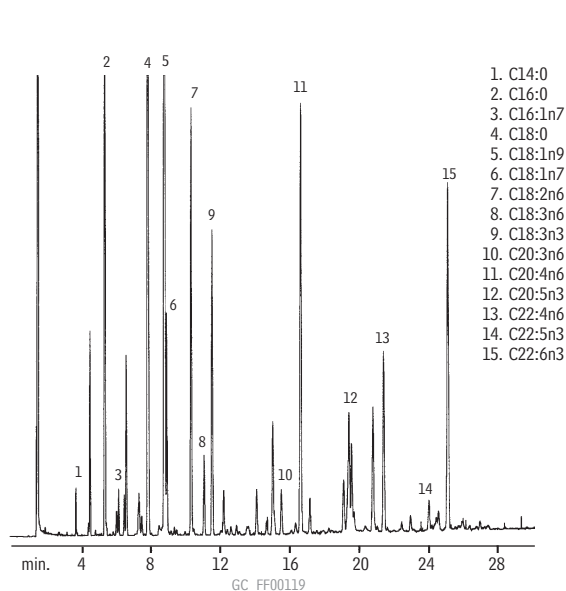


1. C14:0
2. C16:0
3. C16:1n7
4. C18:1n9
5. C18:1n7
6. C18:2n6
7. C18:3n3
8. C20:1n11
9. C20:1n9
10. C20:1n7
11. C18:4n3
12. C22:1n11
13. C22:1n9
14. C20:4n3
15. C20:5n3
16. C21:5n3
17. C22:5n3
18. C22:6n3

Column: Rt®-2330, 30m, 0.25mm ID, 0.20µm (cat.# 10723)
 Sample: 0.5µL split injection of a PUFA mix
 Oven temp.: 160°C to 225°C @ 2°C/min.
 Inj./det. temp.: 225°C/250°C
 Carrier gas: hydrogen
 Linear velocity: 45cm/sec. set @ 160°C
 FID sensitivity: 8 x 10⁻¹¹ AFS
 Split ratio: 35:1

FAMES (PUFA, animal source)

Rt®-2330



1. C14:0
2. C16:0
3. C16:1n7
4. C18:0
5. C18:1n9
6. C18:1n7
7. C18:2n6
8. C18:3n6
9. C18:3n3
10. C20:3n6
11. C20:4n6
12. C20:5n3
13. C22:4n6
14. C22:5n3
15. C22:6n3

Column: Rt®-2330, 30m, 0.32mm ID, 0.20µm (cat.# 10724)
 Sample: 0.1µL split injection of PUFA 2 mix
 Oven temp.: 160°C to 250°C @ 2°C/min. (hold 10 min.)
 Inj./det. temp.: 260°C
 Carrier gas: hydrogen
 Linear velocity: 40cm/sec.
 FID sensitivity: 8 x 10⁻¹¹ AFS
 Split ratio: 20:1