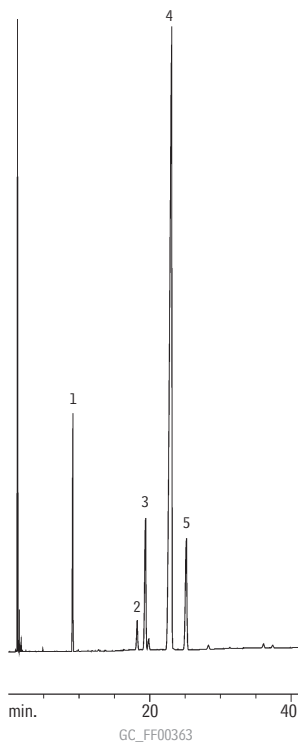


FAMEs

FAMEs (Evening Primrose Oil)

FAMEWAX

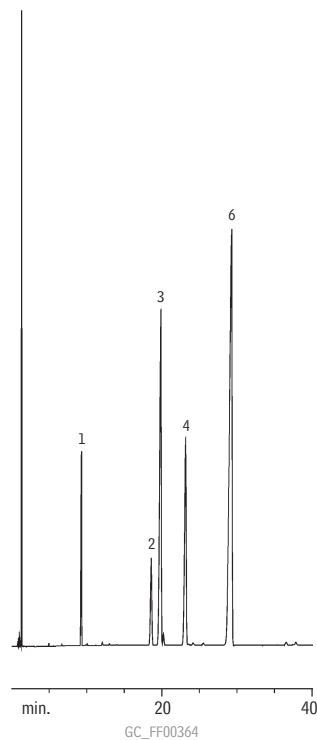
- 1. C16:0
- 2. C18:0
- 3. C18:1n9
- 4. C18:2n6
- 5. C18:3n6



FAMEs (Flax Seed Oil)

FAMEWAX

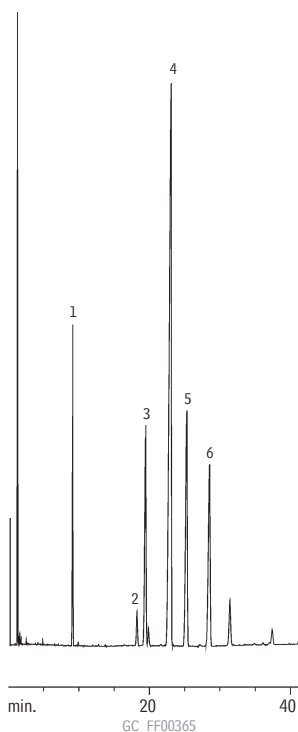
- 1. C16:0
- 2. C18:0
- 3. C18:1n9
- 4. C18:2n6
- 5. C18:3n6
- 6. C18:3n3



FAMEs (Black Currant Seed Oil)

FAMEWAX

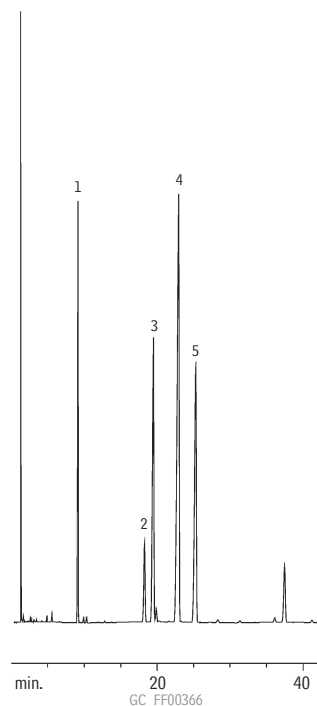
- 1. C16:0
- 2. C18:0
- 3. C18:1n9
- 4. C18:2n6
- 5. C18:3n6
- 6. C18:3n3



FAMEs (Borage Seed Oil)

FAMEWAX

- 1. C16:0
- 2. C18:0
- 3. C18:1n9
- 4. C18:2n6
- 5. C18:3n6



Column and conditions for all four oils analyses:

Column: FAMEWAX, 30m, 0.25mm ID, 0.25µm (cat.# 12497)
 Oven temp.: 165°C (hold 30 min.) to 220°C @ 1.5°C/min. (hold 15 min.)
 Inj. temp.: 225°C
 Det. temp.: 230°C
 Carrier gas: helium @ 40cm/sec.