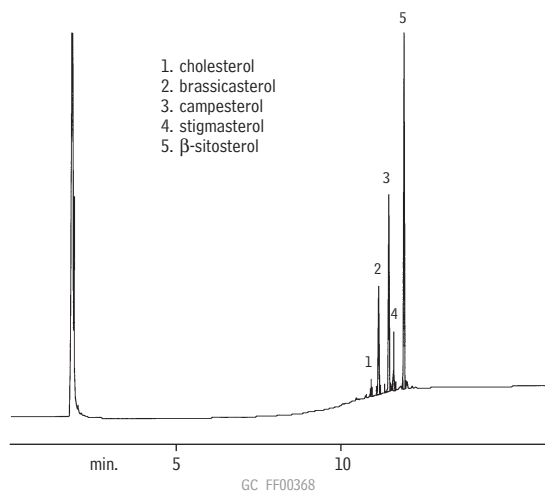


Phytosterols (Saw Palmetto)

Rtx®-5



Column: Rtx®-5, 60m, 0.25mm ID, 0.25 μ m (cat.# 10226)
Inj.: 1 μ L splitless injection*
Oven temp.: 200°C (hold 1 min.) to 340°C @ 15°C/min. (hold 10 min.)
Inj./FID temp.: 345°C/355°C

*Split injection may be used, but results can have greater variability. A split flow of 112mL/min. is suggested.

Chromatogram provided by the Institute for Nutraceutical Advancement (INA)

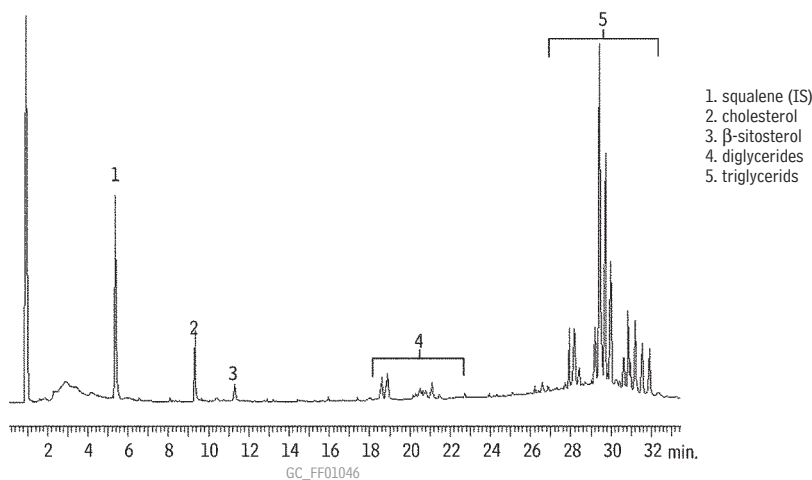
ChromaBLOGraphy

Topical and timely insights from top chromatographers.

Visit us at blog.restek.com

Egg Pasta: Sterols & Glycerides

Rtx®-65TG



Column: Rtx®-65TG, 30m, 0.25mm ID, 0.10 μ m (cat.# 17008)
Sample: 50 μ g/mL fat extract from egg pasta in diethyl ether solution with 3,000ppm squalene (IS)
Inj.: 0.5 μ L, split (1:80), 70°C (hold 12 sec.) at 99°C up to 370°C (hold 5 min.)
Carrier gas: hydrogen
Flow rate: 1.5mL/min.
Oven temp.: 220°C (hold 2.0 min.) to 360°C @ 5°C/min. (hold 5 min.)
Det: FID @ 370°C