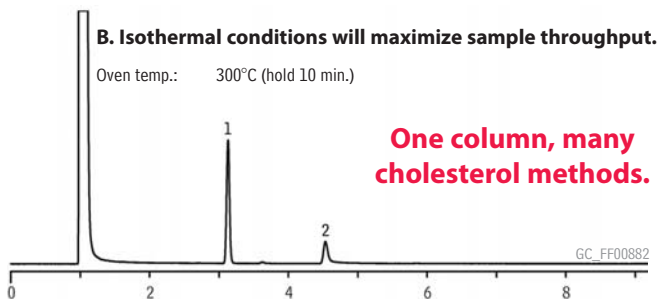
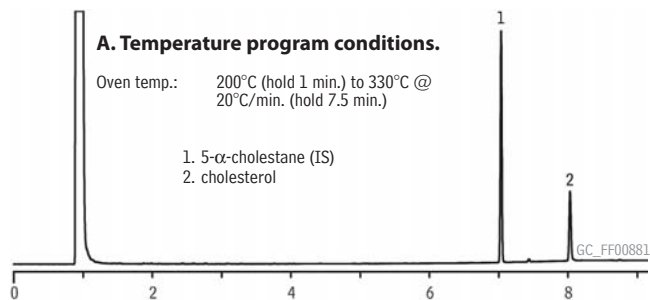


Underivatized Cholesterol

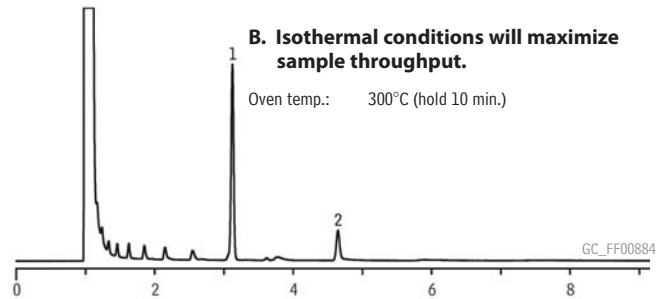
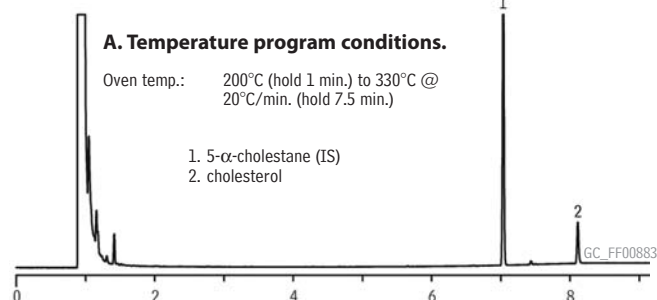
Rxi®-5ms



Column: Rxi®-5ms, 15m, 0.25mm ID, 0.25µm (cat.# 13420)
Sample: 1,000µg/mL cholesterol in DMF, 1000µg/mL 5-α-cholestane in hexane; 25ng cholesterol, 150ng 5-α-cholestane on column
Inj.: 1.0µL, split (20:1), single gooseneck inlet liner w/wool (cat.# 22405)
Inj. temp.: 250°C
Carrier gas: helium, constant pressure (9.7psi @ 200°C)
Linear velocity: 24cm/sec.
Oven temp.: see above
Det.: FID @ 340°C

Derivatized Cholesterol

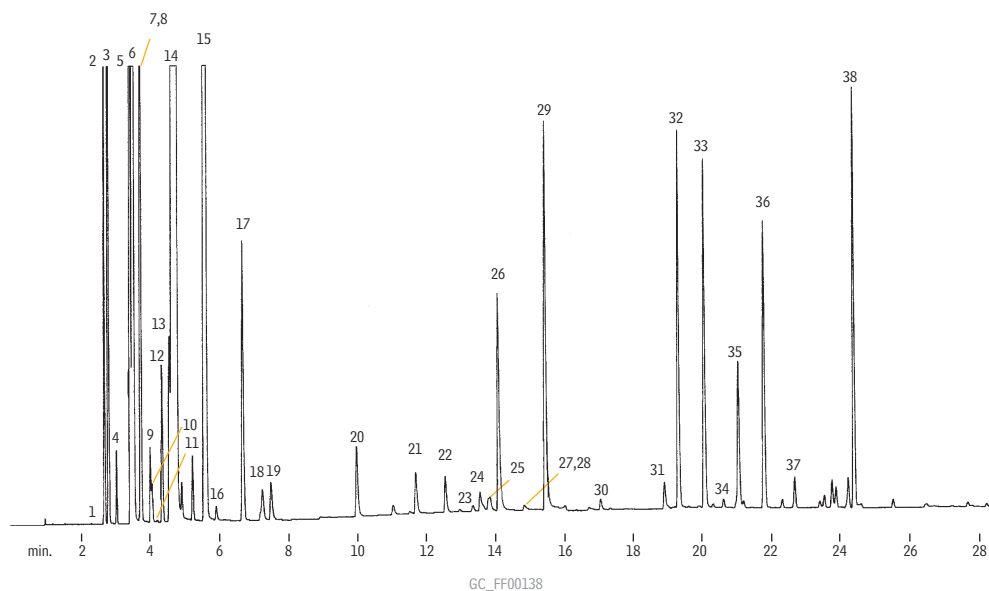
Rxi®-5ms



Column: Rxi®-5ms, 15m, 0.25mm ID, 0.25µm (cat.# 13420)
Sample: 1,000µg/mL cholesterol in hexane, 1000µg/mL 5-α-cholestane in hexane; 50ng derivatized cholesterol, 150ng 5-α-cholestane on column
Inj.: 1.0µL, split (20:1), single gooseneck inlet liner w/wool (cat.# 22405)
Inj. temp.: 250°C
Carrier gas: helium, constant pressure (9.7psi @ 200°C)
Linear velocity: 24cm/sec.
Oven temp.: see above
Det.: FID @ 340°C

Lemon Oil

Rtx®-5



Column: Rtx®-5, 30m, 0.32mm ID, 0.25µm (cat.# 10224)
Sample: Wet needle split injection of a neat lemon oil
Oven temp.: 75°C (hold 8 min.) to 250°C @ 4°C/min.
Inj./det. temp.: 250°C
Carrier gas: hydrogen
Linear velocity: 40cm/sec. (flow rate: 3.2cc/min.)
FID sensitivity: 2 x 10⁻¹¹ AFS
Split ratio: 100:1

1. heptanol
2. α-thujene
3. α-pinene
4. camphene
5. sabinene
6. β-pinene
7. 6-methyl-5-hepten-2-one
8. myrcene
9. octanal
10. α-phellandrene
11. 3-carene
12. α-terpinene
13. p-cymene
14. limonene
15. γ-terpinene
16. octanol
17. terpinolene
18. linalool
19. nonanal
20. citronellal
21. terpinene-4-ol
22. α-terpineol
23. decanol
24. octyl acetate
25. nerol
26. neral
27. carvone
28. geraniol
29. geranial
30. nonyl acetate
31. citronellyl acetate
32. neryl acetate
33. geranyl acetate
34. dodecanal
35. β-caryophyllene
36. trans-α-bergamotene
37. α-humulene
38. β-bisabolene