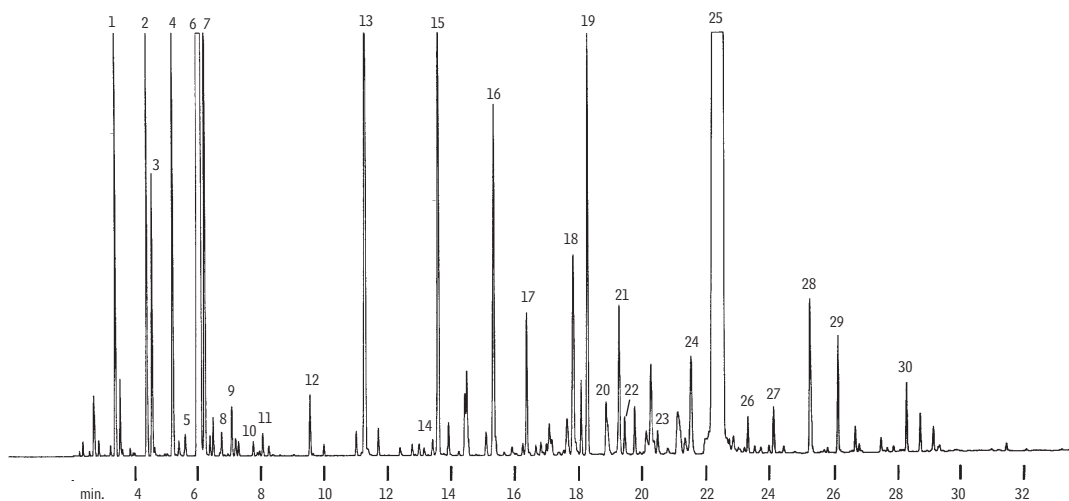


## Essential Oils

## Spearment Oil (Native)

Stabilwax®



GC\_FF00140

Column: Stabilwax®, 60m, 0.25mm ID, 0.25µm (cat.# 10626)

Sample: 0.2µL split injection of a neat spearmint oil

Oven temp.: 75°C (hold 4 min.) to 200°C @ 4°C/min. (hold 10 min.)

Inj./det. temp.: 250°C

Carrier gas: hydrogen

Linear velocity: 40cm/sec. set @ 160°C

FID sensitivity: 4 x 10<sup>-11</sup> AFS

Split ratio: 100:1

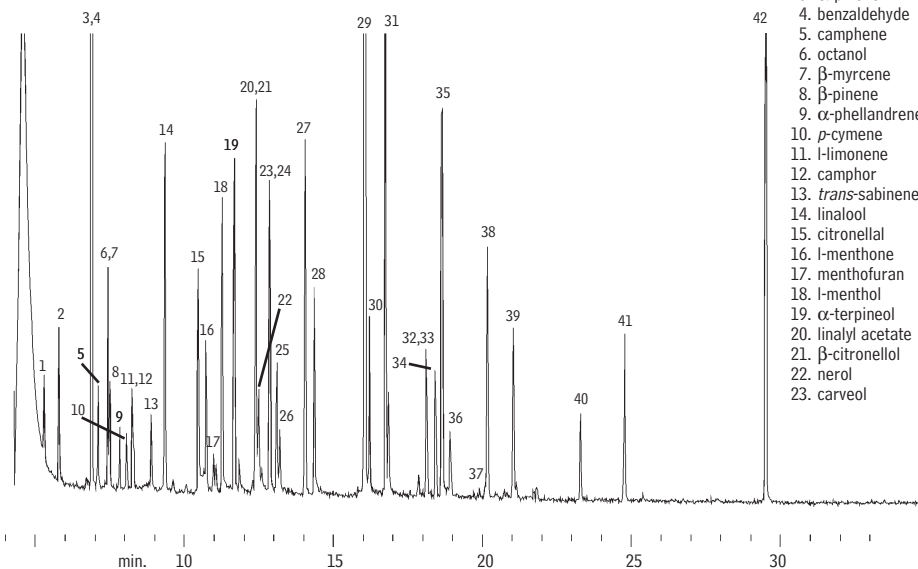
1. α-pinene  
2. β-pinene  
3. sabinene  
4. myrcene  
5. α-terpinene  
6. l-limonene  
7. 1,8-cineole  
8. cis-ocimene  
9. γ-terpinene  
10. p-cymene

11. terpinolene  
12. 3-octyl acetate  
13. 3-octanol  
14. l-menthone  
15. trans-sabinenehydrate  
16. β-bourbonene  
17. linalool  
18. terpinene-4-ol  
19. β-caryophyllene  
20. dihydrocarvone

21. trans-dihydrocarvyl acetate  
22. β-farnesene  
23. α-terpineol  
24. germacrene-Δ  
25. carvone  
26. cis-carvyl acetate  
27. cis-carveol  
28. cis-carveol  
29. cis-jasmone  
30. viridiflorol

## Synthetic Essential Oil Mixture

Rtx®-1



GC\_FF00534

Column: Rtx®-1, 60m, 0.25mm ID, 0.25µm (cat.# 10126)

Sample: 1.0µL split injection of 42 flavor components

Oven temp.: 100°C to 260°C @ 4°C/min. (hold 1 min.)

Inj./det. temp.: 250°C/280°C

Det. type: MSD

Carrier gas: helium

Linear velocity: 30cm/sec. set @ 50°C

FID sensitivity: 2 x 10<sup>-11</sup> AFS

Split vent: 100cc/min.

1. ethyl butyrate  
2. trans-2-hexenol  
3. α-pinene  
4. benzaldehyde  
5. camphene  
6. octanol  
7. β-myrcene  
8. β-pinene  
9. α-phellandrene  
10. p-cymene  
11. l-limonene  
12. camphor  
13. trans-sabinene hydrate  
14. linalool  
15. citronellal  
16. l-menthone  
17. menthofuran  
18. l-menthol  
19. α-terpineol  
20. linalyl acetate  
21. β-citronellol  
22. nerol  
23. carveol

24. anisaldehyde  
25. carvone  
26. geraniol  
27. anethole  
28. cinnamic alcohol  
29. eugenol  
30. neryl acetate  
31. geranyl acetate  
32. vanillin  
33. coumarin  
34. α-ionone  
35. ethyl vanillin  
36. β-caryophyllene  
37. α-caryophyllene  
38. β-ionone  
39. valencene  
40. ethyl laurate  
41. amyl cinnamic aldehyde  
42. nootketone