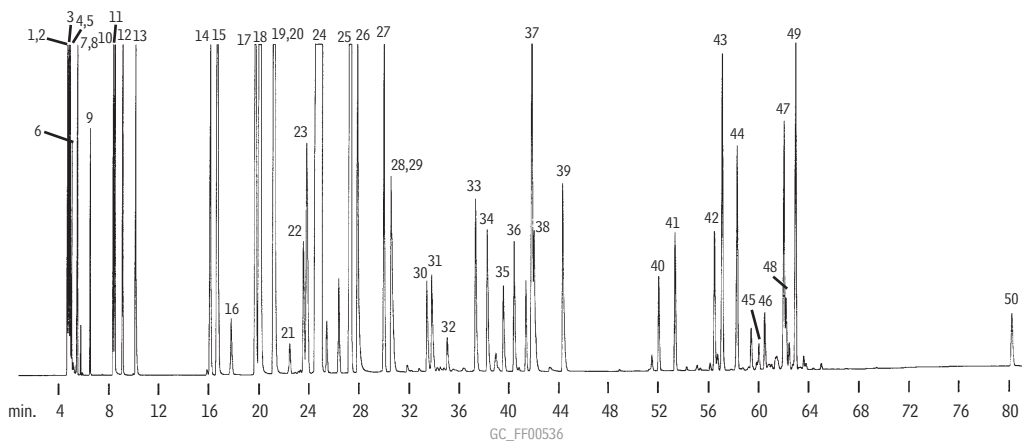


Flavors

Flavor Volatiles

Rtx®-1



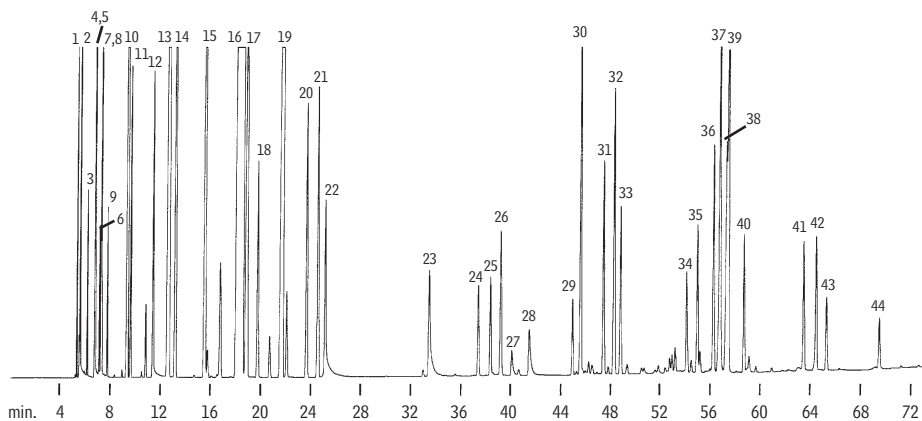
GC_FF00536

- | | | | | |
|-----------------------|-----------------------------|-----------------------------------|-------------------------------------|--|
| 1. methanol | 11. ethyl butyrate | 21. α -phellandrene | 31. <i>trans</i> -limonene monoxide | 41. geranyl acetate |
| 2. acetaldehyde | 12. furfural | 22. α -terpinene | 32. citronellal | 42. α -ionone |
| 3. ethanol | 13. <i>trans</i> -2-hexenal | 23. <i>p</i> -cymene | 33. terpinene-4-ol | 43. β -caryophyllene |
| 4. acetone | 14. α -thujene | 24. δ -limonene | 34. α -terpineol | 44. <i>trans</i> - α -bergamotene |
| 5. isopropyl alcohol | 15. α -pinene | 25. γ -terpinene | 35. decanal | 45. BHA |
| 6. methylene chloride | 16. camphene | 26. octanol | 36. d & l carveol | 46. β -ionone |
| 7. hexane | 17. sabinene | 27. terpinolene | 37. neral | 47. valencene |
| 8. ethyl acetate | 18. β -pinene | 28. nonanal | 38. carvone | 48. γ -elemene |
| 9. ethyl propionate | 19. octanal | 29. linalool | 39. geranial | 49. β -bisabolene |
| 10. <i>n</i> -hexanal | 20. myrcene | 30. <i>cis</i> -limonene monoxide | 40. neryl acetate | 50. nootketone |

Column: Rtx®-1, 60m, 0.53mm ID, 0.50 μ m (cat.# 10143)
 Sample: 0.8 μ L split injection of a flavor volatiles test mix
 Oven temp.: 70° (hold 15 min.) to 190°C @ 2°C/min. (hold 5 min.)
 Inj./det. temp.: 220°C/260°C
 Carrier gas: helium
 Linear velocity: 20cm/sec. set @ 70°C
 FID sensitivity: 64 x 10⁻¹¹ AFS
 Split ratio: 20:1

Flavor Volatiles

Stabilwax®



GC_FF00537

- | | | | | |
|-----------------------|-----------------------------|-----------------------------------|--|----------------------|
| 1. hexane | 10. α -pinene | 19. γ -terpinene | 28. decanal | 37. valencene |
| 2. acetaldehyde | 11. ethylbutyrate | 20. <i>p</i> -cymene | 29. linalool | 38. geranial |
| 3. acetone | 12. <i>n</i> -hexanal | 21. terpinolene | 30. octanol | 39. carvone |
| 4. methanol | 13. β -pinene | 22. octanal | 31. <i>trans</i> - α -bergamotene | 40. geranyl acetate |
| 5. ethyl acetate | 14. sabinene | 23. nonanal | 32. β -caryophyllene | 41. d/l carveol |
| 6. isopropyl alcohol | 15. myrcene | 24. <i>cis</i> -limonene monoxide | 33. terpinene-4-ol | 42. α -ionone |
| 7. ethanol | 16. δ -limonene | 25. <i>trans</i> -limonene | 34. neral | 43. d/l carveol |
| 8. methylene chloride | 17. 1,8-cineole | 26. furfural | 35. α -terpineol | 44. β -ionone |
| 9. ethyl propionate | 18. <i>trans</i> -2-hexenal | 27. citronellal | 36. neryl acetate | |

Column: Stabilwax®, 60m, 0.53mm ID, 0.50 μ m (cat.# 10643)
 Sample: 0.8 μ L split injection of a flavor volatiles test mix
 Oven temp.: 70°C (hold 15 min.) to 190°C @ 2°C/min. (hold 5 min.)
 Inj./det. temp.: 220°C/260°C
 Carrier gas: helium
 Linear velocity: 20cm/sec. set @ 70°C
 FID sensitivity: 64 x 10⁻¹¹ AFS
 Split ratio: 20:1