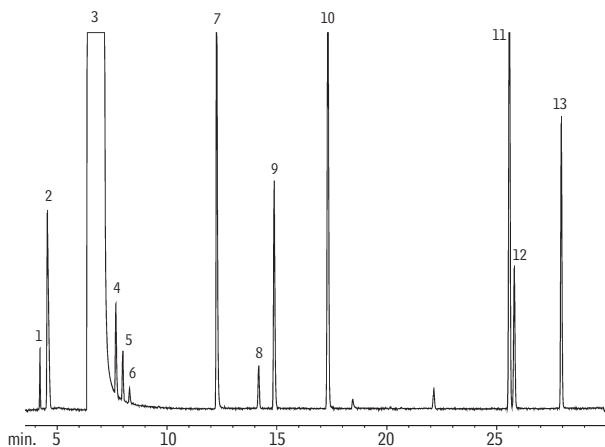


Flavors: Beverage Analysis

Rum Rtx®-1301

- | | |
|-----------------------|----------------------------|
| 1. acetaldehyde | 9. <i>sec</i> -butanol |
| 2. methanol | 10. isobutanol |
| 3. ethanol | 11. isoamyl alcohol |
| 4. acetone | 12. active amyl alcohol |
| 5. ethyl formate | 13. <i>n</i> -amyl alcohol |
| 6. isopropanol | |
| 7. <i>n</i> -propanol | |
| 8. ethyl acetate | |

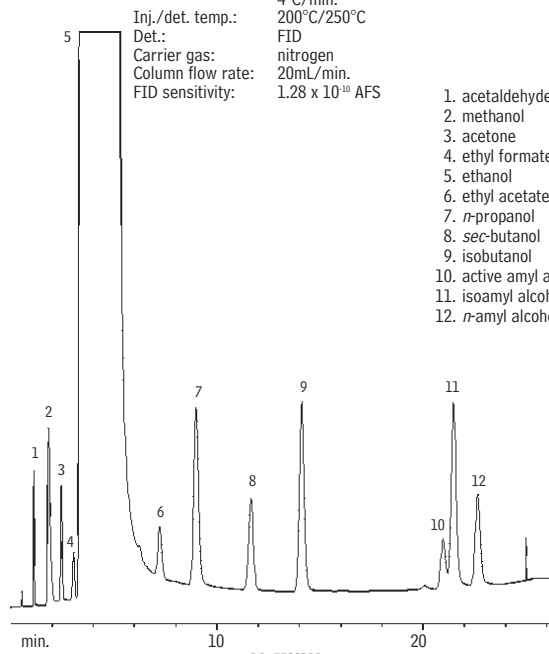


GC_FF00110

Column: Rtx®-1301, 60m, 0.25mm ID, 1.4µm (cat.# 16016)
 Inj.: 1.0µL split injection using a Cyclosplitter® inlet liner (cat.# 20706)
 Conc.: neat
 Oven temp.: 35°C (hold 5 min.) to 100°C @ 1°C/min.
 Inj./det. temp.: 150°C/200°C
 Carrier gas: hydrogen @ 40cm/sec.
 Split ratio: 100:1

Rum CarboBlack B

Column: 5% Carbowax® 20M 80/120 CarboBlack B, 2m, 1/8" OD, 2mm ID SilcoSmooth® tubing (cat.# 80105)
 Inj.: 0.5µL on-column injection, neat
 Oven temp.: 65°C (hold 5 min.) to 150°C @ 4°C/min.
 Inj./det. temp.: 200°C/250°C
 Det.: FID
 Carrier gas: nitrogen
 Column flow rate: 20mL/min.
 FID sensitivity: 1.28 x 10⁻¹⁰ AFS

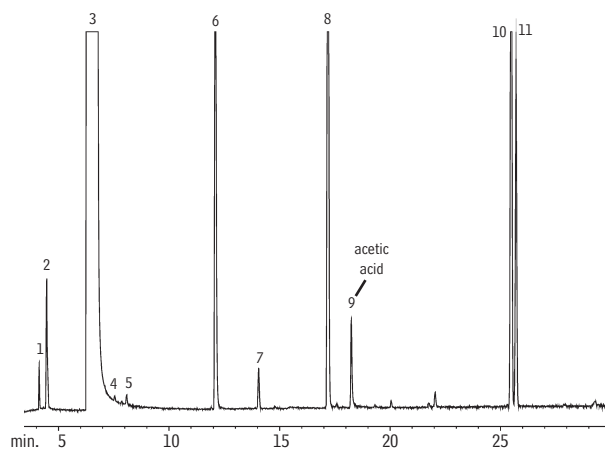


GC_FF00111

- | |
|----------------------------|
| 1. acetaldehyde |
| 2. methanol |
| 3. acetone |
| 4. ethyl formate |
| 5. ethanol |
| 6. ethyl acetate |
| 7. <i>n</i> -propanol |
| 8. <i>sec</i> -butanol |
| 9. isobutanol |
| 10. active amyl alcohol |
| 11. isoamyl alcohol |
| 12. <i>n</i> -amyl alcohol |

Scotch Rtx®-1301

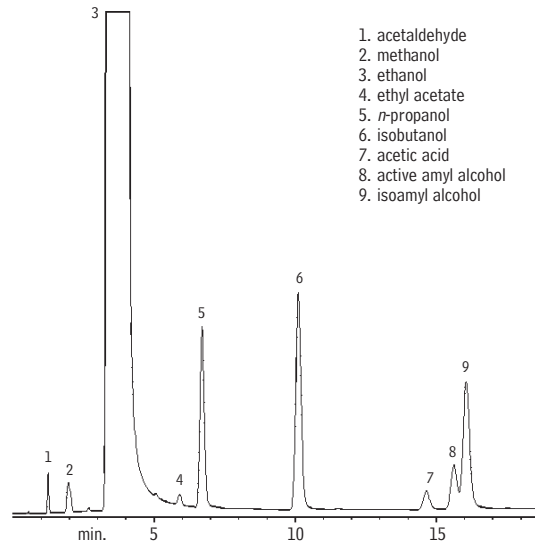
- | | |
|-----------------------|-------------------------|
| 1. acetaldehyde | 7. ethyl acetate |
| 2. methanol | 8. isobutanol |
| 3. ethanol | 9. acetic acid |
| 4. acetone | 10. isoamyl alcohol |
| 5. isopropanol | 11. active amyl alcohol |
| 6. <i>n</i> -propanol | |



GC_FF00112

Column: Rtx®-1301, 60m, 0.25mm ID, 1.4µm (cat.# 16016)
 Inj.: 1.0µL split injection using a Cyclosplitter® inlet liner (cat.# 20706)
 Conc.: neat
 Oven temp.: 35°C (hold 5 min.) to 100°C @ 1°C/min.
 Inj./det. temp.: 150°C/200°C
 Carrier gas: hydrogen @ 40cm/sec.
 Split ratio: 100:1

Scotch CarboBlack B



GC_FF00113

Column: 5% Carbowax® 20M 80/120 CarboBlack B, 2m, 1/8" OD, 2mm ID SilcoSmooth® tubing (cat.# 80105)
 Inj.: 0.5µL on-column injection, neat
 Oven temp.: 70°C to 150°C @ 4°C/min.
 Inj./det. temp.: 200°C/250°C
 Det.: FID
 Carrier gas: nitrogen
 Column flow rate: 20mL/min.
 FID sensitivity: 1.28 x 10⁻¹⁰ AFS

- | |
|------------------------|
| 1. acetaldehyde |
| 2. methanol |
| 3. ethanol |
| 4. ethyl acetate |
| 5. <i>n</i> -propanol |
| 6. isobutanol |
| 7. acetic acid |
| 8. active amyl alcohol |
| 9. isoamyl alcohol |