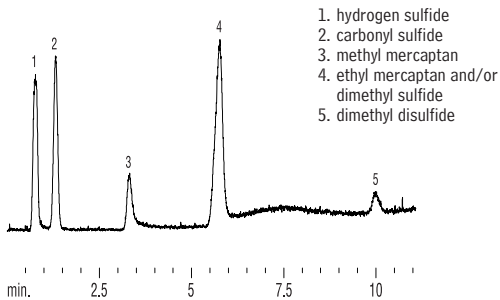


Food Contaminants

Sulfur Compounds in Beverage Grade CO<sub>2</sub>

Rt®-XLSulfur



- 1. hydrogen sulfide
- 2. carbonyl sulfide
- 3. methyl mercaptan
- 4. ethyl mercaptan and/or dimethyl sulfide
- 5. dimethyl disulfide

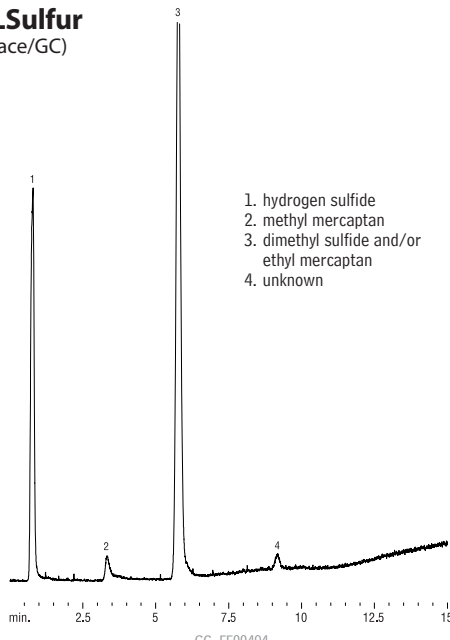
GC\_FF00491

Column: Rt®-XLSulfur, 100/120 mesh, 1m, 0.75mm ID Sulfinert® tubing (cat.# 19806)  
 Conc.: sulfur standard @ 20ppb each in CO<sub>2</sub>  
 Inj.: 1cc sample loop, 6-port Valco® valve  
 Carrier gas: helium  
 Flow rate: 10mL/min. @ ambient temp.  
 Oven temp.: 60°C to 260°C @ 15°C/min. (hold 5 min.)  
 Det. sensitivity: SCD, attn. x 1  
 Det. temp.: 800°C

Sulfur Compounds in Beer

Rt®-XLSulfur

(Headspace/GC)



- 1. hydrogen sulfide
- 2. methyl mercaptan
- 3. dimethyl sulfide and/or ethyl mercaptan
- 4. unknown

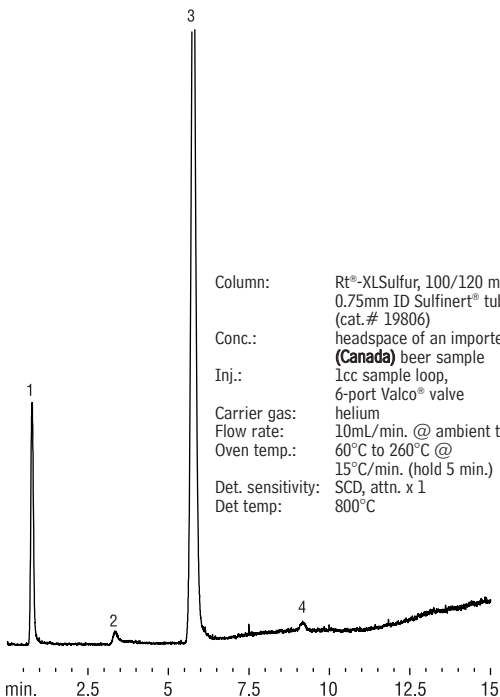
GC\_FF00494

Column: Rt®-XLSulfur, 100/120 mesh, 1m, 0.75mm ID Sulfinert® tubing (cat.# 19806)  
 Conc.: headspace of a domestic (US) beer sample  
 Inj.: 1cc sample loop, 6-port Valco® valve  
 Carrier gas: helium  
 Flow rate: 10mL/min. @ ambient temp.  
 Oven temp.: 60°C to 260°C @ 15°C/min. (hold 5 min.)  
 Det. sensitivity: SCD, attn. x 1  
 Det. temp.: 800°C

Sulfur Compounds in Beer

Rt®-XLSulfur

(Headspace/GC)



- 1. hydrogen sulfide
- 2. methyl mercaptan
- 3. dimethyl sulfide and/or ethyl mercaptan
- 4. unknown

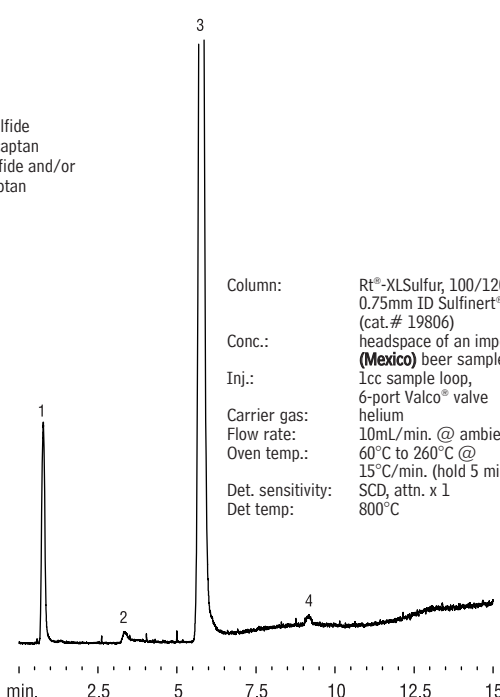
GC\_FF00487

Column: Rt®-XLSulfur, 100/120 mesh, 1m, 0.75mm ID Sulfinert® tubing (cat.# 19806)  
 Conc.: headspace of an imported (Canada) beer sample  
 Inj.: 1cc sample loop, 6-port Valco® valve  
 Carrier gas: helium  
 Flow rate: 10mL/min. @ ambient temp.  
 Oven temp.: 60°C to 260°C @ 15°C/min. (hold 5 min.)  
 Det. sensitivity: SCD, attn. x 1  
 Det temp: 800°C

Sulfur Compounds in Beer

Rt®-XLSulfur

(Headspace/GC)



GC\_FF00483

Column: Rt®-XLSulfur, 100/120 mesh, 1m, 0.75mm ID Sulfinert® tubing (cat.# 19806)  
 Conc.: headspace of an imported (Mexico) beer sample  
 Inj.: 1cc sample loop, 6-port Valco® valve  
 Carrier gas: helium  
 Flow rate: 10mL/min. @ ambient temp.  
 Oven temp.: 60°C to 260°C @ 15°C/min. (hold 5 min.)  
 Det. sensitivity: SCD, attn. x 1  
 Det temp: 800°C