

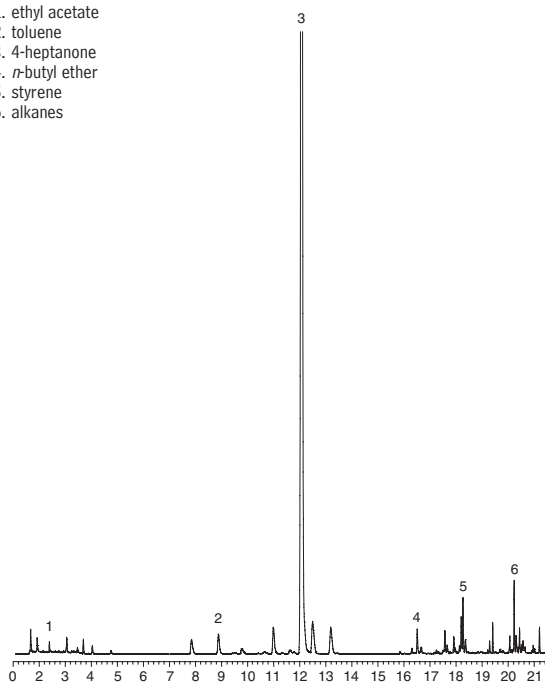
## Food Contaminants

## Food Packaging Volatiles by Purge &amp; Trap GC/MS

## Rtx®-5MS

(Purge &amp; Trap GC/MS)

1. ethyl acetate
2. toluene
3. 4-heptanone
4. *n*-butyl ether
5. styrene
6. alkanes



Column: Rtx®-5MS, 30m, 0.25mm ID, 1 $\mu$ m (cat.# 12653)  
 GC: Agilent 6890  
 Oven temp.: 50°C to 92°C @ 3°C/min., to 220°C @ 20°C/min. (hold 1 min.)  
 Inj. temp.: 250°C  
 Carrier gas: helium  
 Linear velocity: 36cm/sec. (1mL/min.)  
 Det. sensitivity: NA  
 Split ratio: 20:1  
 Det.: MSD (Agilent 5973)  
 Det. temp.: 280°C  
 Scan range: 35-260amu  
 Ionization: EI @ 70eV  
 Mode:

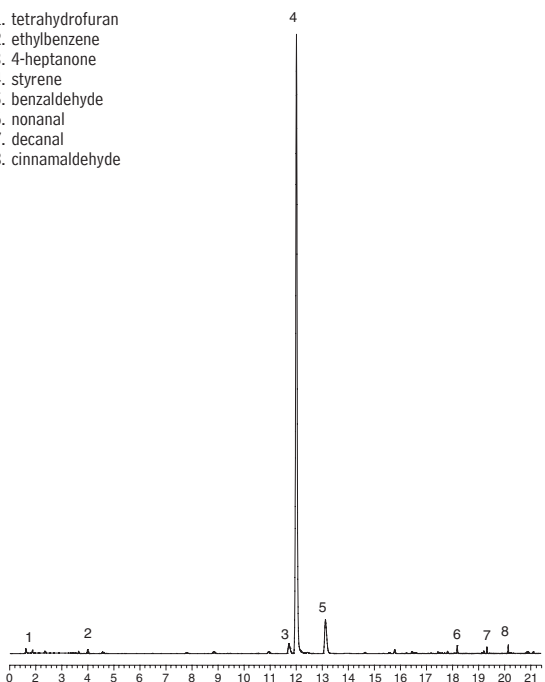
Sample Conditions:  
 Sample: Overwrap, inner bowl  
 Concentrator: Tekmar LSC-3100 purge & trap  
 Trap: Vocarb 3000, type K  
 Purge: 10 min. @ 40mL/min., at 60°C  
 Dry purge: 3 min. @ 40mL/min.  
 Desorb preheat: 220°C  
 Desorb: 245°C, 2 min., 40mL/min.  
 Bake: 230°C, 6 min.  
 Interface: 1:20 split at injection port with 1mm ID inlet liner  
 Transfer line: 0.53mm ID Silcosteel® MXT® tubing (cat.# 22501)

## Food Packaging Volatiles by Purge &amp; Trap GC/MS

## Rtx®-5MS

(Purge &amp; Trap GC/MS)

1. tetrahydrofuran
2. ethylbenzene
3. 4-heptanone
4. styrene
5. benzaldehyde
6. nonanal
7. decanal
8. cinnamaldehyde



Column: Rtx®-5MS, 30m, 0.25mm ID, 1 $\mu$ m (cat.# 12653)  
 GC: Agilent 6890  
 Oven temp.: 50°C to 92°C @ 3°C/min., to 220°C @ 20°C/min. (hold 1 min.)  
 Inj. temp.: 250°C  
 Carrier gas: helium  
 Linear velocity: 36cm/sec. (1mL/min.)  
 Det. sensitivity: NA  
 Split ratio: 20:1  
 Det.: MSD (Agilent 5973)  
 Det. temp.: 280°C  
 Scan range: 35-260amu  
 Ionization: EI @ 70eV  
 Mode:

Sample Conditions:  
 Sample: Overwrap, lid of bowl  
 Concentrator: Tekmar LSC-3100 purge & trap  
 Trap: Vocarb 3000, type K  
 Purge: 10 min. @ 40mL/min., at 60°C  
 Dry purge: 3 min. @ 40mL/min.  
 Desorb preheat: 220°C  
 Desorb: 245°C, 2 min., 40mL/min.  
 Bake: 230°C, 6 min.  
 Interface: 1:20 split at injection port with 1mm ID inlet liner  
 Transfer line: 0.53mm ID Silcosteel® MXT® tubing (cat.# 22501)