

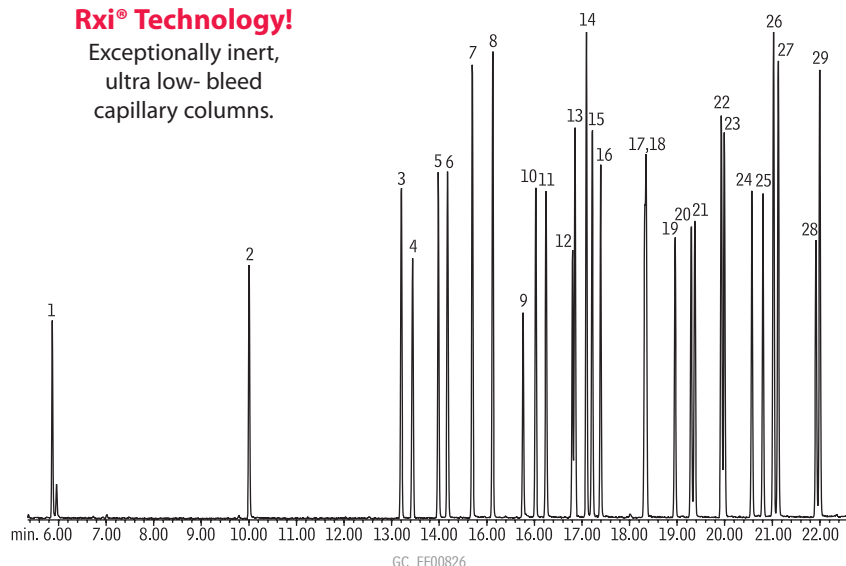
Organochlorine and Organophosphorus Pesticides

FAPAS® Proficiency Testing

Rxi®-5ms

Rxi® Technology!

Exceptionally inert,
ultra low- bleed
capillary columns.



- | | |
|----------------------------|----------------------------|
| 1. dichlorvos | 16. chlorpyrifos |
| 2. methacrifos | 17. heptachlor epoxide |
| 3. α -BHC | 18. oxychlordan |
| 4. hexachlorobenzene | 19. <i>trans</i> -chlordan |
| 5. δ -BHC (lindane) | 20. endosulfan I |
| 6. β -BHC | 21. <i>cis</i> -chlordan |
| 7. diazinon | 22. 2,4'-DDT |
| 8. etrimphos | 23. dieldrin |
| 9. phosphamidon | 24. endrin |
| 10. chlorpyrifos-methyl | 25. endosulfan II |
| 11. heptachlor | 26. 4,4'-DDE |
| 12. fenitrothion | 27. 4,4'-DDD |
| 13. pirimiphos methyl | 28. endosulfan sulfate |
| 14. malathion | 29. 4,4'-DDT |
| 15. aldrin | |

Column: Rxi®-5ms, 30m, 0.25mm ID, 0.25 μ m (cat.# 13423)
 Sample: FAPAS Series 5 OC Pesticide Mix 1 (cat.# 32412), FAPAS Series 9 OP Pesticide Mix 1 (cat.# 32413)
 Inj.: 1.0 μ L, 10ppm each analyte, split (10:1) 4mm Drilled Uniliner® inlet liner (hole near bottom) (cat.# 20771)
 Instrument: Agilent 6890
 Inj. temp.: 290°C
 Carrier gas: helium, constant flow
 Flow rate: 1.2mL/min.
 Oven temp.: 100°C (hold 0.5 min.) to 300°C @ 7°C/min. (hold 1 min.)
 Det.: Agilent 5973 GC/MS
 Transfer line temp.: 280°C
 Scan range: 35-550amu
 Solvent delay: 4 min.
 Tune: DFTPP
 Ionization: EI

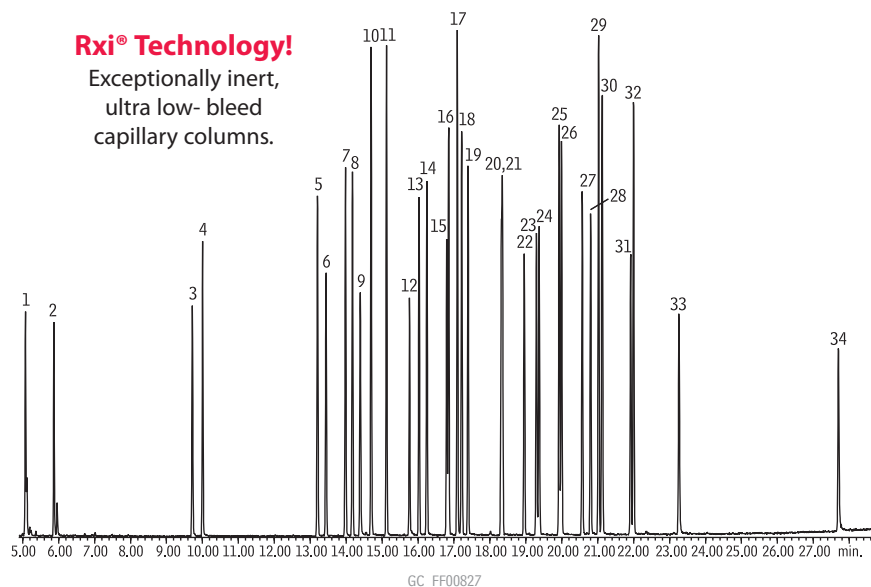
Organochlorine and Organophosphorus Pesticides

FAPAS® Proficiency Testing

Rxi®-5ms

Rxi® Technology!

Exceptionally inert,
ultra low- bleed
capillary columns.



- | | |
|----------------------------|----------------------------|
| 1. naphthalene-d8 | 18. aldrin |
| 2. dichlorvos | 19. chlorpyrifos |
| 3. acenaphthene-d10 | 20. heptachlor epoxide |
| 4. methacrifos | 21. oxychlordan |
| 5. α -BHC | 22. <i>trans</i> -chlordan |
| 6. hexachlorobenzene | 23. endosulfan I |
| 7. δ -BHC (lindane) | 24. <i>cis</i> -chlordan |
| 8. β -BHC | 25. 2,4'-DDT |
| 9. phenanthrene-d10 | 26. dieldrin |
| 10. diazinon | 27. endrin |
| 11. etrimphos | 28. endosulfan II |
| 12. phosphamidon | 29. 4,4'-DDE |
| 13. chlorpyrifos-methyl | 30. 4,4'-DDD |
| 14. heptachlor | 31. endosulfan sulfate |
| 15. fenitrothion | 32. 4,4'-DDT |
| 16. pirimiphos methyl | 33. chrysene-d12 |
| 17. malathion | 34. perylene-d12 |

Column: Rxi®-5ms, 30m, 0.25mm ID, 0.25 μ m (cat.# 13423)
 Sample: FAPAS Series 5 OC Pesticide Mix 1 (cat.# 32412), FAPAS Series 9 OP Pesticide Mix 1 (cat.# 32413), SV Internal Standard Mix (cat.# 31206)
 Inj.: 1.0 μ L, 10ppm each analyte, split (10:1) 4mm Drilled Uniliner® inlet liner (hole near bottom) (cat.# 20771)
 Instrument: Agilent 6890
 Inj. temp.: 290°C
 Carrier gas: helium, constant flow
 Flow rate: 1.2mL/min.
 Oven temp.: 100°C (hold 0.5 min.) to 300°C @ 7°C/min. (hold 1 min.)
 Det.: Agilent 5973 GC/MS
 Transfer line temp.: 280°C
 Scan range: 35-550amu
 Solvent delay: 4 min.
 Tune: DFTPP
 Ionization: EI