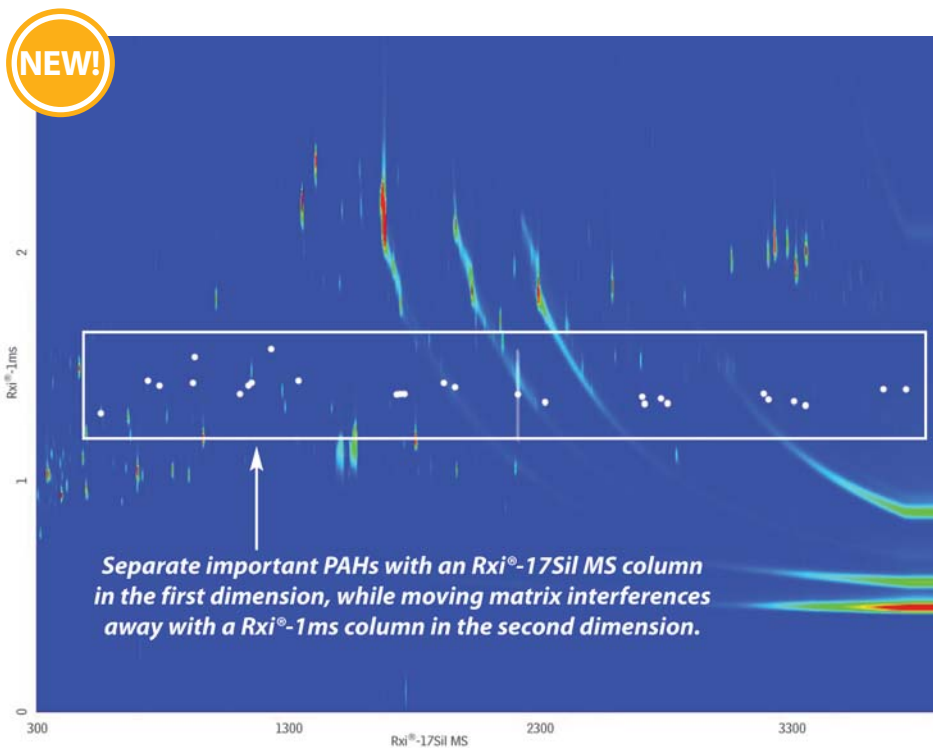


QuEChERS Extract of NIST SRM 2974a Freeze-Dried Mussel Tissue (GCxGC contour plot)



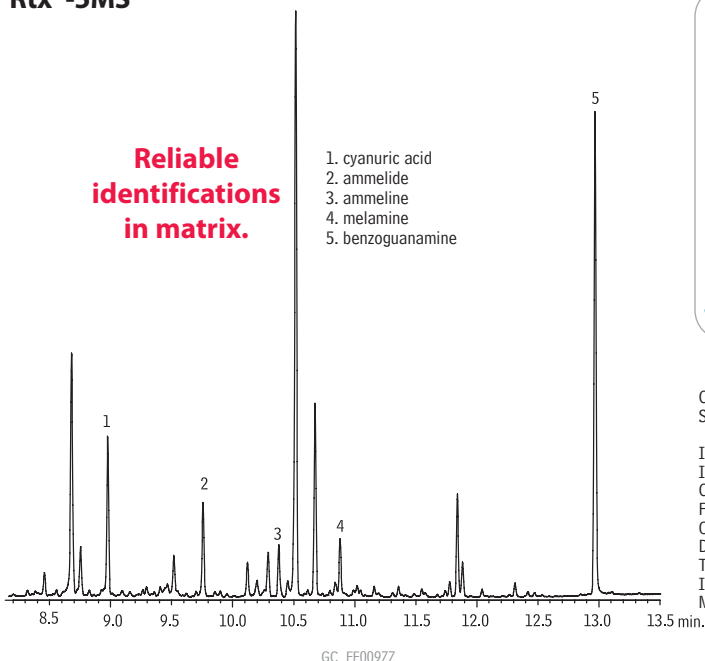
Peaks

- | | | | |
|----------------------------|-------------------------------|--------------------------|----------------------------|
| 1. Naphthalene | 7. Acenaphthene | 14. Pyrene | 21. Benzo(a)pyrene |
| 2. 2-Methylnaphthalene | 8. 2,3,5-Trimethylnaphthalene | 15. Benzo(a)anthracene | 22. Perylene |
| 3. 1-Methylnaphthalene | 9. Fluorene | 16. Chrysene | 23. Dibenz(a,h)anthracene |
| 4. Biphenyl | 10. Phenanthrene | 17. Benzo(b)fluoranthene | 24. Indeno(1,2,3-cd)pyrene |
| 5. 2,6-Dimethylnaphthalene | 11. Anthracene | 18. Benzo(k)fluoranthene | 25. Benzo(ghi)perylene |
| 6. Acenaphthylene | 12. 1-Methylphenanthrene | 19. Benzo(j)fluoranthene | |
| | 13. Fluoranthene | 20. Benzo(e)pyrene | |

Column	Rxi®-17Sil MS 30 m, 0.25 mm ID, 0.25 µm (cat.# 14123) Rxi®-1ms 1.2 m, 0.15 mm ID, 0.15 µm (cat.# custom)
Sample	NIST SRM 2974a freeze-dried mussel tissue with incurred residues
Diluent:	Acetonitrile
Injection	1 µL splitless (hold 1 min.)
Inj. Vol.:	Goose-neck Splitless (4mm) w/Semivolatiles Wool (cat.# 20798-231.1)
Liner:	250 °C
Inj. Temp.:	40 mL/min.
Purge Flow:	
Oven	Rxi®-17Sil MS: 90 °C (hold 1 min.) to 320 °C at 3.75 °C/min. (hold 2.67 min.) Rxi®-1ms: 95 °C (hold 1 min.) to 325 °C at 3.75 °C/min. (hold 2.67 min.)
Oven Temp:	
Carrier Gas	He
Modulation	
Modulator	
Temp. Offset:	20 °C
Second Dimension	
Separation Time:	3 sec.
Hot Pulse Time:	0.9 sec.
Cool Time	
between Stages:	0.6 sec.
Detector	TOFMS
Transfer	
Line Temp.:	300 °C
Analyzer Type:	TOF
Source Temp.:	250 °C
Electron Energy:	70 eV
Mass Defect:	-20 mu/100 u
Solvent Delay	
Time:	5 min.
Tune Type:	PFTBA
Ionization Mode:	EI
Acquisition Range:	45 to 550 amu
Spectral	
Acquisition Rate:	100 spectra/sec
Instrument	LECO Pegasus 4D GCxGC-TOFMS
Notes	PAHs (shown in box) elute in a relatively narrow band and are identified by the white peak marker dots.

Melamine Spike in Cat Food

Rtx®-5MS



Get More!

High Sensitivity Melamine GC/MS Analysis of Cat Food

Modified Conditions Save Costs and Reduce Maintenance

read the full article at www.restek.com/melamine

Column:	Rtx®-5MS, 30m, 0.25mm ID, 0.25µm (cat.# 12623)
Sample:	melamine, cyanuric acid, ammeline, ammelide, benzoguanamine in dry cat food (10µg/mL prederivatized)
Inj.:	1µL, splitless (hold 1 min.), 3.5mm splitless inlet liner (cat.# 22286)
Inj. temp.:	280°C
Carrier gas:	helium, constant flow
Flow rate:	1mL/min.
Oven temp.:	75°C to 320°C @ 15°C/min. (hold 4 min.)
Det:	MS
Transfer line temp.:	290°C
Ionization:	EI
Mode:	SIM