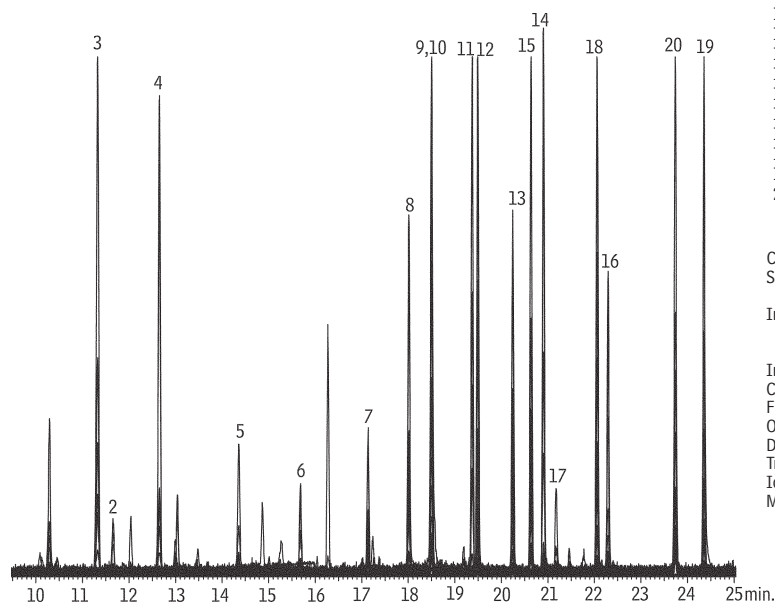


## Organochlorine Pesticides

## Rxi®-5Sil MS

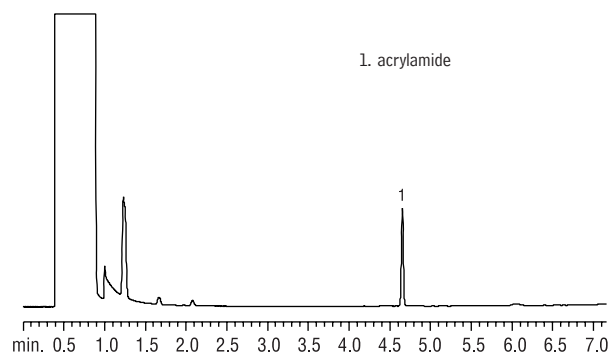


GC\_FF01044

Compound	Quant. ion	Q1	Q3
*1. $\alpha$ -BHC	219	181	109
2. $\gamma$ -BHC	219	181	109
3. $\beta$ -BHC	219	181	109
4. $\delta$ -BHC	219	181	109
5. heptachlor	272	237	100
6. aldrin	263	293	220
7. heptachlor epoxide	263	237	81
8. $\gamma$ -chlordane	272	237	65
9. $\alpha$ -chlordane	272	237	65
10. endosulfan I	195	207	241
11. 4,4'-DDE	246	318	176
12. dieldrin	79	263	277
13. endrin	263	281	81
14. 4,4'-DDD	235	165	199
15. endosulfan II	195	207	-
16. 4,4'-DDT	235	165	199
17. endrin aldehyde	67	250	345
18. endosulfan sulfate	272	229	239
19. methoxychlor	227	274	-
20. endrin ketone	67	317	281
* not present			

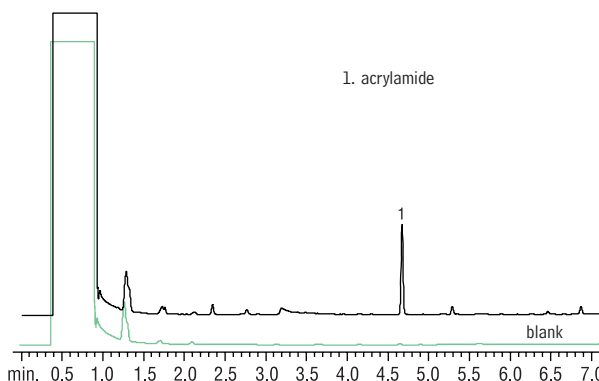
Column: Rxi®-5Sil MS, 30m, 0.25mm ID, 0.25 $\mu$ m (cat.# 13623)  
 Sample: 10 $\mu$ g/mL Organochlorine Pesticide Mix AB # 3 (cat.# 32415) in olive oil  
 Inj.: 1 $\mu$ L, splitless (hold 0.5 min.), 3.5mm single gooseneck liner (cat.# 20962) packed with wool  
 Inj. temp.: 225 $^{\circ}$ C  
 Carrier gas: helium, constant flow  
 Flow rate: 1mL/min.  
 Oven temp.: 130 $^{\circ}$ C to 330 $^{\circ}$ C @ 5 $^{\circ}$ C/min.  
 Det: MS  
 Transfer line temp.: 320 $^{\circ}$ C  
 Ionization: EI  
 Mode: SIM

NEW!

Acrylamide (Reference Standard)  
Stabilwax®

GC\_FF00642

Column: Stabilwax®, 15m, 0.53mm ID, 0.50 $\mu$ m (cat.# 10637)  
 Sample: 25 $\mu$ g/mL acrylamide standard in water  
 Inj.: 1.0 $\mu$ L, 0.5 min hold  
 Liner: 2mm splitless with wool (cat.# 20830)  
 Inj. temp.: 260 $^{\circ}$ C  
 Carrier gas: helium, constant pressure  
 Linear velocity: 62cm/sec. @ 100 $^{\circ}$ C  
 Oven temp.: 100 $^{\circ}$ C (hold 0.5 min.) to 200 $^{\circ}$ C @ 15 $^{\circ}$ C/min.  
 Det.: FID @ 260 $^{\circ}$ C

Acrylamide (Potato Chip Extract)  
Stabilwax®

GC\_FF00643

Column: Stabilwax®, 15m, 0.53mm ID, 0.50 $\mu$ m (cat.# 10637)  
 Sample: 1g of potato chips spiked with 100 $\mu$ g acrylamide  
 Inj.: 1.0 $\mu$ L, 0.5 min. hold  
 Liner: 2mm splitless with wool (cat.# 20830)  
 Inj. temp.: 260 $^{\circ}$ C  
 Carrier gas: helium, constant pressure  
 Linear velocity: 62cm/sec. @ 100 $^{\circ}$ C  
 Oven temp.: 100 $^{\circ}$ C (hold 0.5 min.) to 200 $^{\circ}$ C @ 15 $^{\circ}$ C/min.  
 Det.: FID @ 260 $^{\circ}$ C