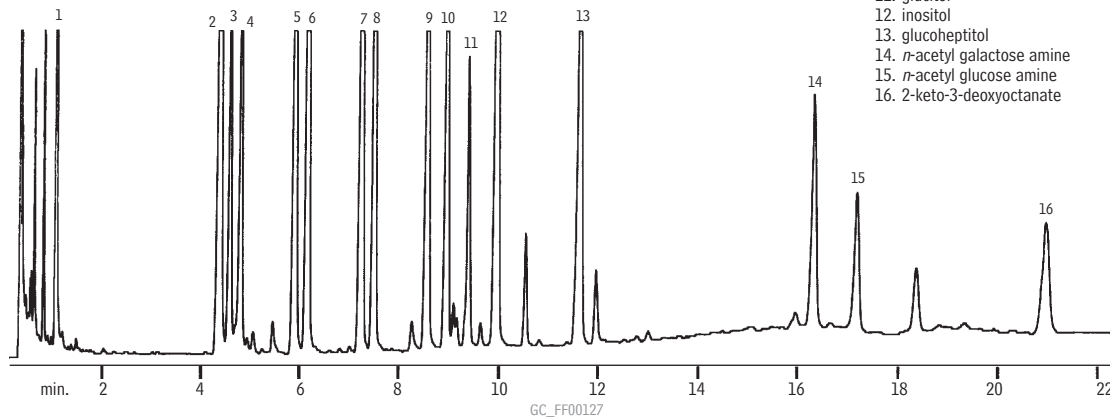


Sugars

Sugars (Alditol Acetates)

Rt®-2330

1. glyceraldehyde
2. deoxyribitol
3. rhamnitol
4. fucitol
5. ribitol
6. arabinitol
7. xylitol
8. deoxyglucitol
9. mannitol
10. galactitol
11. glucitol
12. inositol
13. glucoheptitol
14. *D*-acetyl galactose amine
15. *D*-acetyl glucose amine
16. 2-keto-3-deoxyoctanate

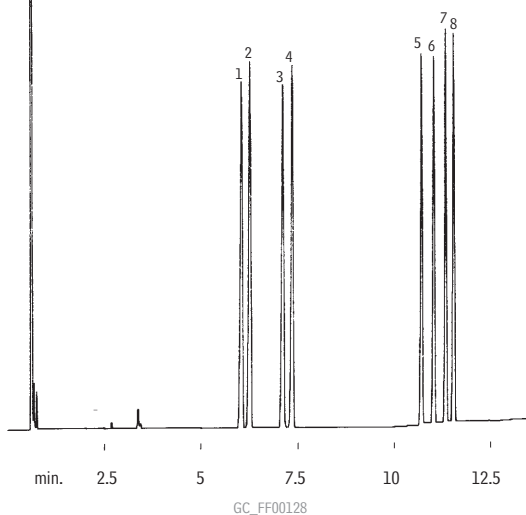


Column: Rt®-2330, 15m, 0.32mm ID, 0.20 μ m (cat.# 10721)
 Inj.: 0.6 μ L split injection
 Oven temp.: 175°C (hold 2 min.) to 240°C @ 8°C/min. (hold 1 min.) to 265°C @ 8°C/min. (hold 12 min.)
 Inj./det. temp.: 275°C
 Carrier gas: helium
 Linear velocity: 80cm/sec. (flow rate: 10cc/min.)
 FID sensitivity: 2 x 10⁻¹¹ AFS
 Split ratio: 20:1

Sugars (Alditol Acetates)

Rtx®-225

1. rhamnitol
2. fucitol
3. ribitol
4. arabinitol
5. mannitol
6. galactitol
7. glucitol
8. inositol



Column: Rtx®-225, 15m, 0.25mm ID, 0.25 μ m (cat.# 14020)
 Inj.: 0.5 μ L split injection
 Oven temp.: 190°C (hold 5 min.) to 250°C @ 8°C/min. (hold 5 min.)
 Inj./det. temp.: 260°C
 Carrier gas: hydrogen
 Linear velocity: 42cm/sec. set @ 40°C
 FID sensitivity: 16 x 10⁻¹¹ AFS
 Split ratio: 50:1