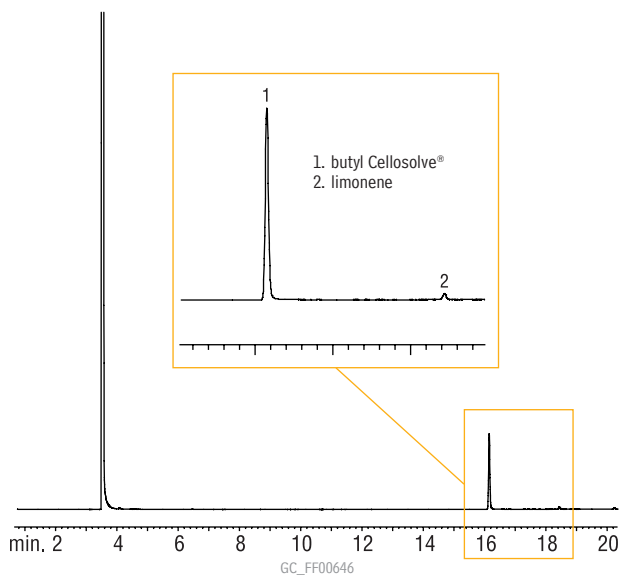


Cleaning Solvents (All-Purpose Cleaner)

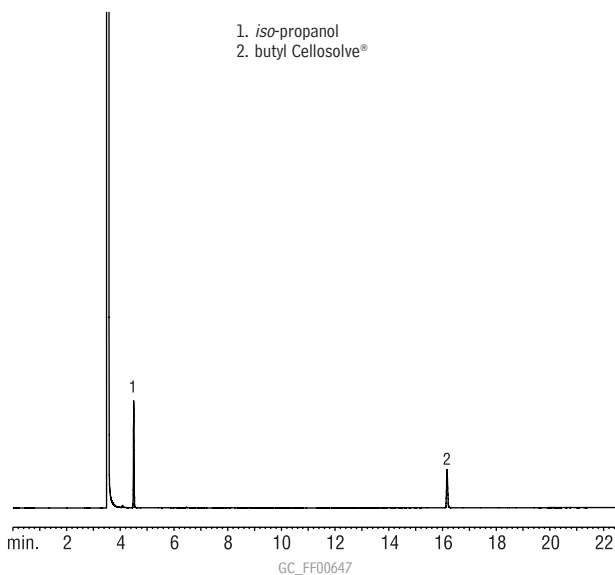
Rtx®-VMS



Column: Rtx®-VMS, 60m, 0.25mm ID, 1.4 μ m (cat.# 19916)
 Sample: approx. 5% cleaner in methanol
 Inj.: 1.0 μ L split (split ratio 100:1), 4mm inlet liner (cat.# 20814)
 Inj. temp.: 250°C
 Carrier gas: hydrogen, constant flow
 Flow rate: 1.5mL/min.
 Oven temp.: 60°C (1 min. hold) to 138°C @ 4°C/min. to 145°C @ 2°C/min. to 210°C @ 15°C/min. to 230°C @ 5°C/min.
 Det.: FID @ 250°C

Cleaning Solvents (Glass Cleaner)

Rtx®-VMS



Column: Rtx®-VMS, 60m, 0.25mm ID, 1.4 μ m (cat.# 19916)
 Sample: approx. 5% cleaner in methanol
 Inj.: 1.0 μ L split (split ratio 100:1), 4mm inlet liner (cat.# 20814)
 Inj. temp.: 250°C
 Carrier gas: hydrogen, constant flow
 Flow rate: 1.5mL/min.
 Oven temp.: 60°C (1 min. hold) to 138°C @ 4°C/min. to 145°C @ 2°C/min. to 210°C @ 15°C/min. to 230°C @ 5°C/min.
 Det.: FID @ 250°C

Chromatogram
Search Tool

Search by compound name, synonym,
CAS # or keyword

www.restek.com/chromatograms

