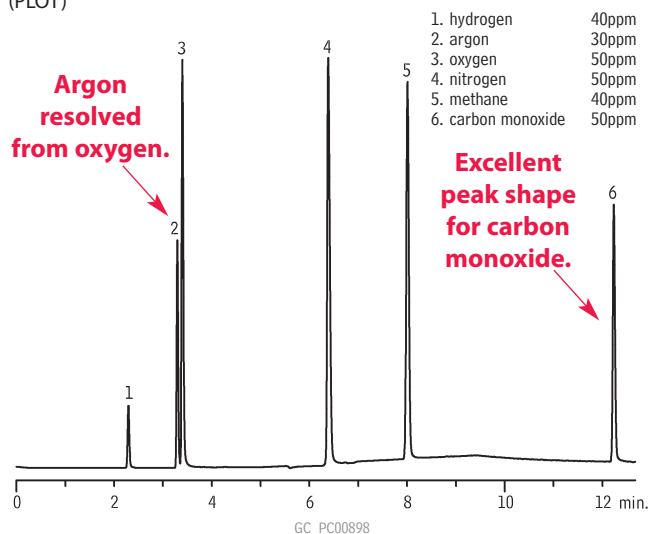


Permanent Gases

Permanent Gases

Rt®-Msieve 5A

(PLOT)

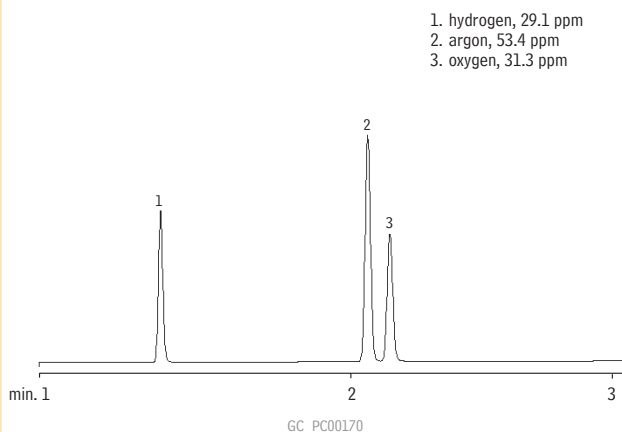


Column: Rt®-Msieve 5A, 30m, 0.53mm ID, 50µm (cat.# 19723)
 Sample: permanent gases (ppm)
 Inj.: 5µL sample loop, 6-port Valco® valve, valve temp.: ambient
 Inj. temp.: 200°C
 Carrier gas: helium, constant flow
 Flow: 5mL/min.
 Oven temp.: 27°C (hold 5 min.) to 100°C @ 10°C/min. (hold 5 min.)
 Det.: Valco® helium ionization detector @ 150°C

Permanent Gases

Rt®-MSieve 5A

(PLOT)



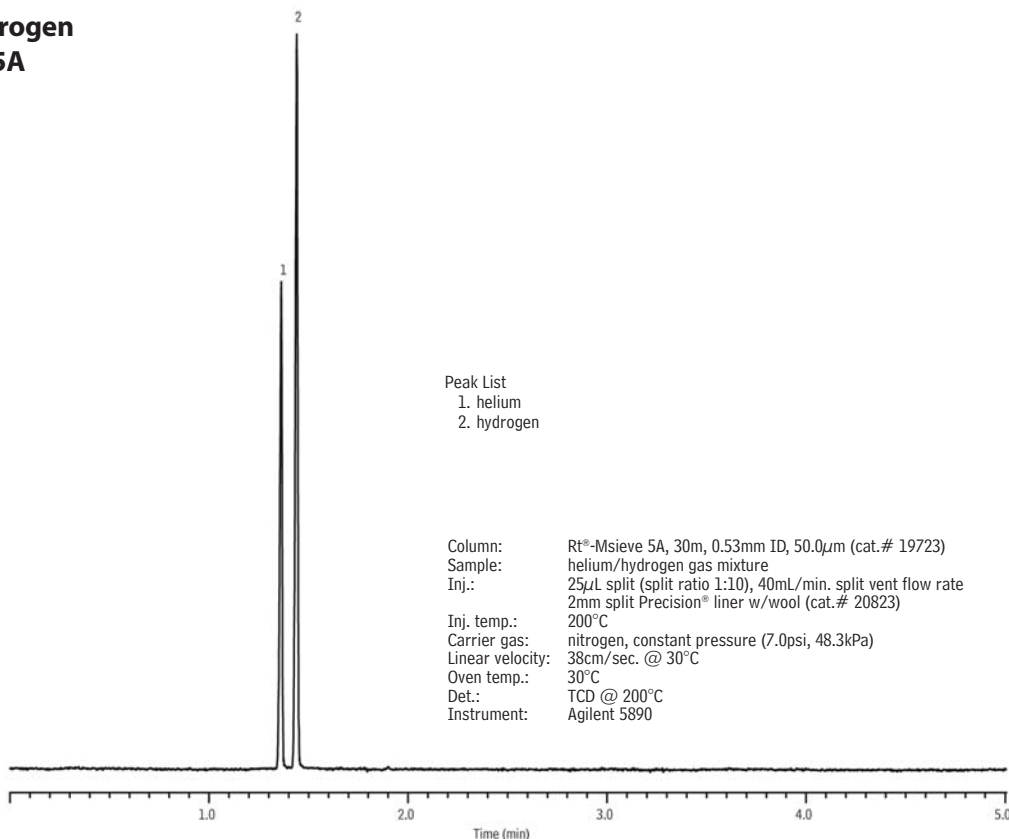
Column: Rt®-Msieve 5A, 30m, 0.53mm ID, 50µm (cat.# 19723)
 Sample: 0.5mL (sample loop injection)
 Column temp.: 27°C
 Carrier gas: helium
 Linear velocity: 34cm/sec.
 Det.: Valco® HID

Chromatogram courtesy of Larry McElmurry, Mobile Analytical Labs.

Helium/Hydrogen

Rt®-Msieve 5A

(PLOT)



Column: Rt®-Msieve 5A, 30m, 0.53mm ID, 50.0µm (cat.# 19723)
 Sample: helium/hydrogen gas mixture
 Inj.: 25µL split (split ratio 1:10), 40mL/min. split vent flow rate
 2mm split Precision® liner w/wool (cat.# 20823)
 Inj. temp.: 200°C
 Carrier gas: nitrogen, constant pressure (7.0psi, 48.3kPa)
 Linear velocity: 38cm/sec. @ 30°C
 Oven temp.: 30°C
 Det.: TCD @ 200°C
 Instrument: Agilent 5890

