

Hydrocarbon Gases

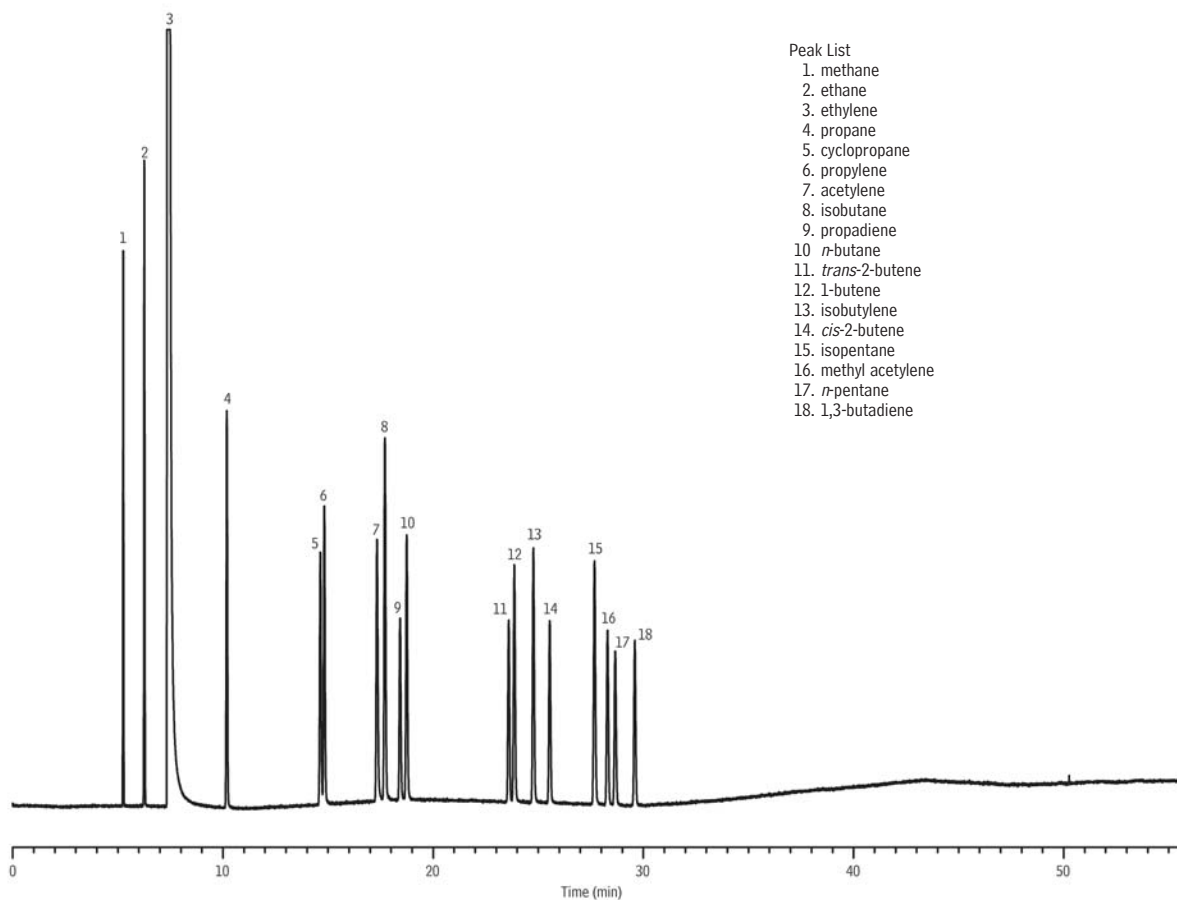
Ethylene and C1-C5 Hydrocarbons

ASTM D6159-97

Rt®-Alumina BOND/KCl, Rtx®-1

(PLOT)

NEW!



Peak	Compound
1	methane
2	ethane
3	ethylene
4	propane
5	cyclopropane
6	propylene
7	acetylene
8	isobutane
9	propadiene
10	<i>n</i> -butane
11	<i>trans</i> -2-butene
12	1-butene
13	isobutylene
14	<i>cis</i> -2-butene
15	isopentane
16	methyl acetylene
17	<i>n</i> -pentane
18	1,3-butadiene

GC_PC01110

Column: Rt®-Alumina BOND/KCl, 50m, 0.53mm ID, 10.0µm (cat.# 19760) in series with Rtx®-1, 30m, 0.53mm ID, 5.0µm (cat.# 10179), connected using a Universal Press-Tight® Connector (cat.# 20401)

Sample: ethylene and C1-C5 hydrocarbons

Inj.: 1µL split, 60mL/min. split vent flow rate
2mm splitless liner (cat.# 20712)

Inj. temp.: 200°C

Carrier gas: helium, constant pressure (8.0psi, 55.2kPa)

Linear velocity: 25.4cm/sec. @ 35°C

Oven temp.: 35°C (hold 2 min.) to 190°C @ 4°C/min. (hold 15 min.)
(conditions as per ASTM D6159-97)

Det.: FID @ 200°C

Instrument: Agilent 5890