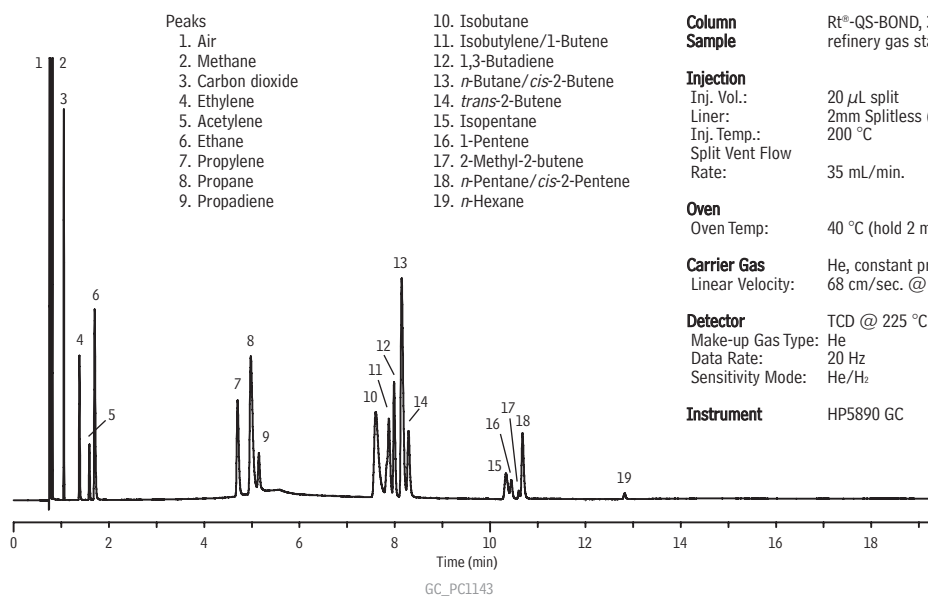




Refinery Gas Mixture

Rt®-QS-BOND

(PLOT)



Column Sample Rt®-QS-BOND, 30 m, 0.53 mm ID, 20 μm (cat.# 19738) refinery gas standard

Injection
Inj. Vol.: 20 μL split
Liner: 2mm Splitless (cat.# 20712)
Inj. Temp.: 200 °C
Split Vent Flow Rate: 35 mL/min.

Oven
Oven Temp: 40 °C (hold 2 min.) to 225 °C at 15 °C/min. (hold 5 min.)

Carrier Gas
Carrier Gas: He, constant pressure (11.5 psi, 79.3kPa)
Linear Velocity: 68 cm/sec. @ 40 °C

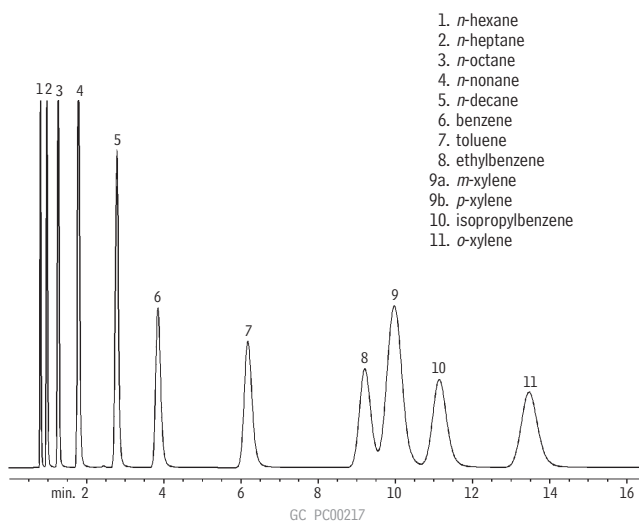
Detector
Detector: TCD @ 225 °C
Make-up Gas Type: He
Data Rate: 20 Hz
Sensitivity Mode: He/H₂

Instrument HP5890 GC

Aromatics, Aliphatics

10% TCEP 100/120 Chromosorb® PAW

(packed)



Column: 10% TCEP on 100/120 Chromosorb® PAW, 2.5m, 1/8" OD, 2mm ID SilcoSmooth® tubing (cat.# 80126)
Sample size: 0.1mL neat
Oven temp.: 80°C
Inj./det. temp.: 200°C/250°C
Carrier gas: nitrogen
Flow rate: 20mL/min.
FID sensitivity: 128 x 10⁻¹⁰ AFS

Chromatogram Search Tool

Search by compound name, synonym, CAS # or keyword

www.restek.com/chromatograms