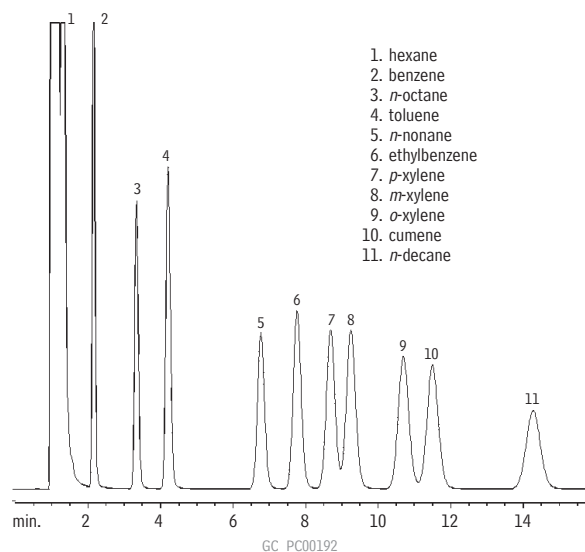


Aromatics (Xylene Isomers plus Cumene)

5% Rt®-1200/1.75% Bentone® 34

(packed)



Column: 5% Rt®-1200/1.75% Bentone® 34 on 100/120 Silcoport®, 1.8m, 1/8" OD, 2mm ID SilcoSmooth® tubing (cat.# 80125)

Sample size: 0.1µL

Conc.: 0.5µg/µL in hexane

Oven temp.: 75°C

Inj./det. temp.: 200°C

Carrier gas: nitrogen

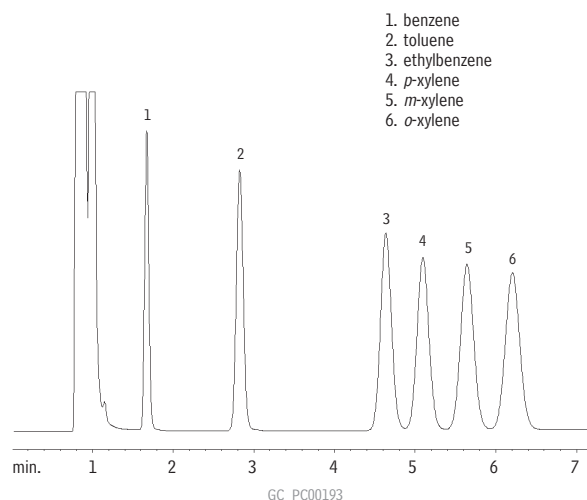
Flow rate: 20mL/min.

FID sensitivity: 32 x 10¹¹ AFS

Aromatics (Xylene Isomers /BTEX)

5% Rt®-1200/5% Bentone® 34

(packed)



Column: 5% Rt®-1200/5% Bentone® 34 100/120 Silcoport®, 2m, 1/8" OD, 2mm ID SilcoSmooth® tubing (cat.# 80129)

Sample size: 0.1µL

Conc.: 0.5µg/µL in hexane

Oven temp.: 100°C

Inj./det. temp.: 200°C

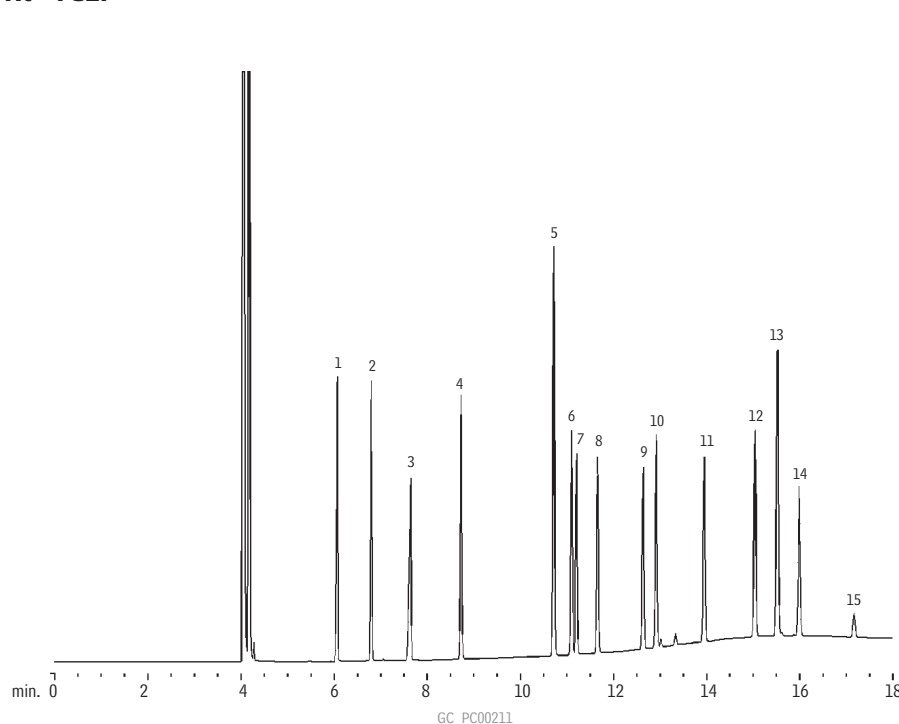
Carrier gas: nitrogen

Flow rate: 20mL/min.

FID sensitivity: 32 x 10¹¹ AFS

Aromatics

Rt®-TCEP



1. n-undecane
2. benzene
3. n-dodecane
4. toluene
5. ethylbenzene
6. p-xylene
7. m-xylene
8. cumene
9. n-propylbenzene
10. o-xylene
11. mesitylene
12. 1-ethyl-2-methylbenzene
13. m-diethylbenzene
14. p-diethylbenzene
15. o-diethylbenzene

Column: Rt®-TCEP, 60m, 0.25mm ID, 0.40µm (cat.# 10999)

Inj.: 1.0µL split injection, components @ 500ppm (ethylbenzene @ 1000ppm)

Oven temp.: 60°C (hold 5 min.) to 100°C @ 5°C/min. (hold 10 min.)

Inj./det. temp.: 200°C

Carrier gas: helium

Linear velocity: 30cm/sec. set @ 80°C

FID sensitivity: 6.4 x 10¹¹ AFS

Split flow: 46mL/min.