

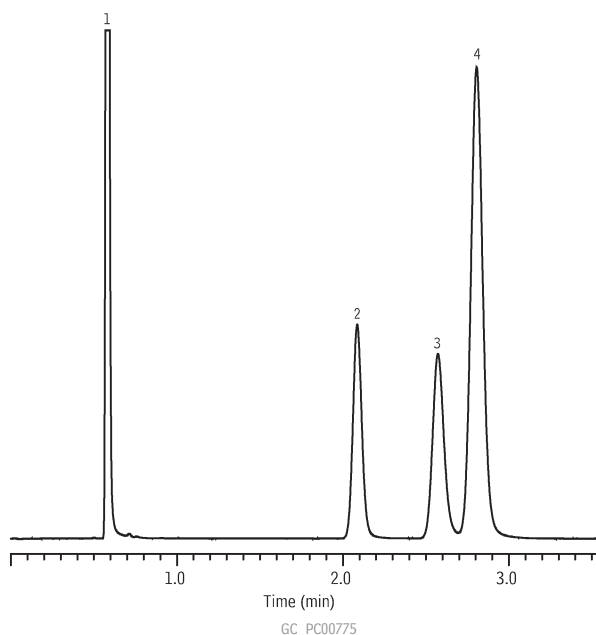
## Hydrocarbons

## Motor Oil &amp; Aviation Gas

## ASTM Method D3606-99

## 10% Rtx®-1 &amp; 20% TCEP

(micropacked)



1. nonaromatics
2. benzene
3. methyl ethyl ketone (IS)
4. toluene

## Column:

A: 10% Rtx®-1 on 60/80 Chromosorb® WAW, 0.8m, 1/16 inch, 1mm ID Silcosteel® tubing

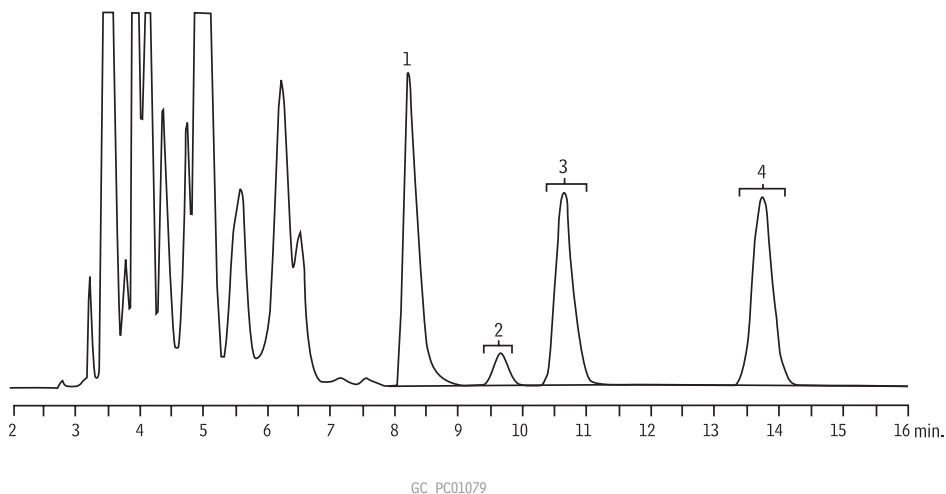
B: 20% TCEP on 80/100 Chromosorb® PAW, 4.0m, 1/16 inch, 1mm ID Silcosteel® tubing connected in series and using Micropacked Column On-Column Injection Kit

Sample: benzene, toluene, methyl ethyl ketone in pentane  
 Inj.: 1.0µL, on-column, 4mm ID splitless inlet liner (cat.# 20772)  
 Carrier gas: hydrogen, constant flow  
 Flow rate: 9.0mL/min.  
 Inj. temp.: 200°C  
 Oven temp.: 145°C  
 Det.: FID @ 200°C

## Gasoline

## ASTM D3606 Modified (for Gasoline Containing Ethanol)

(packed)



1. ethanol
2. benzene
3. 2-butanol
4. toluene

Column: D3606 Application Column (2 column set, cat.# 83606-800)  
 Column 1: nonpolar Rtx®-1, 6' (1.8m), 1/8" OD, 2.0mm ID  
 Column 2: proprietary packing material, 16' (4.9m), 1/8" OD, 2.0mm ID

Sample: 1.5µL gasoline with internal standard  
 Inj.: 200°C  
 Backflush: 3 min.  
 Carrier gas: helium, constant flow  
 Flow rate: 20mL/min.  
 Oven temp.: 135°C, isothermal  
 Det.: TCD @ 200°C

Chromatogram courtesy of Boguslaw Dudek, Conoco Phillips, Linden, NJ.