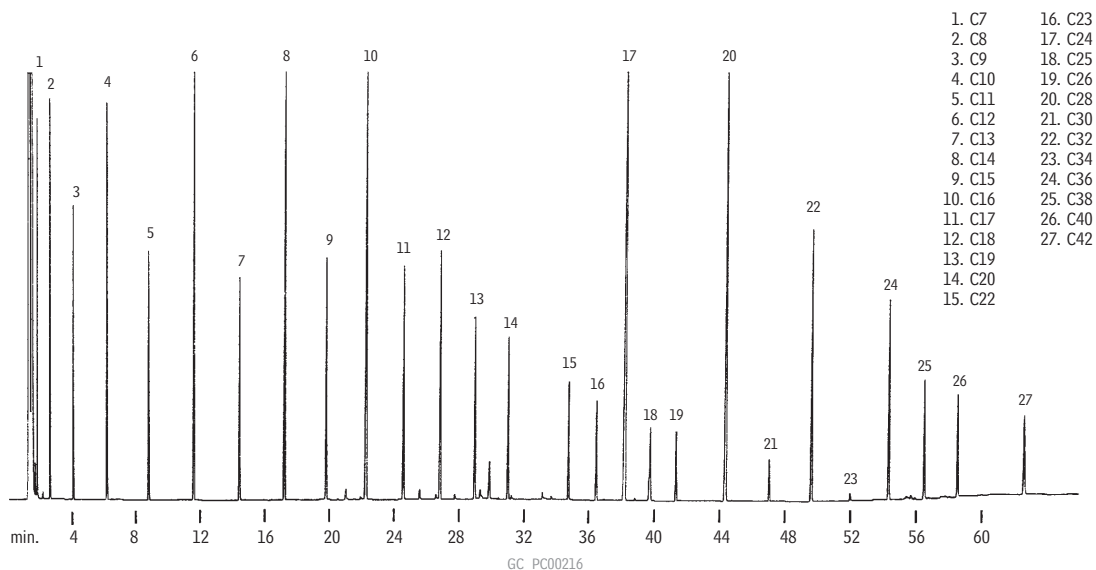


Hydrocarbons

Hydrocarbons, C7-C42

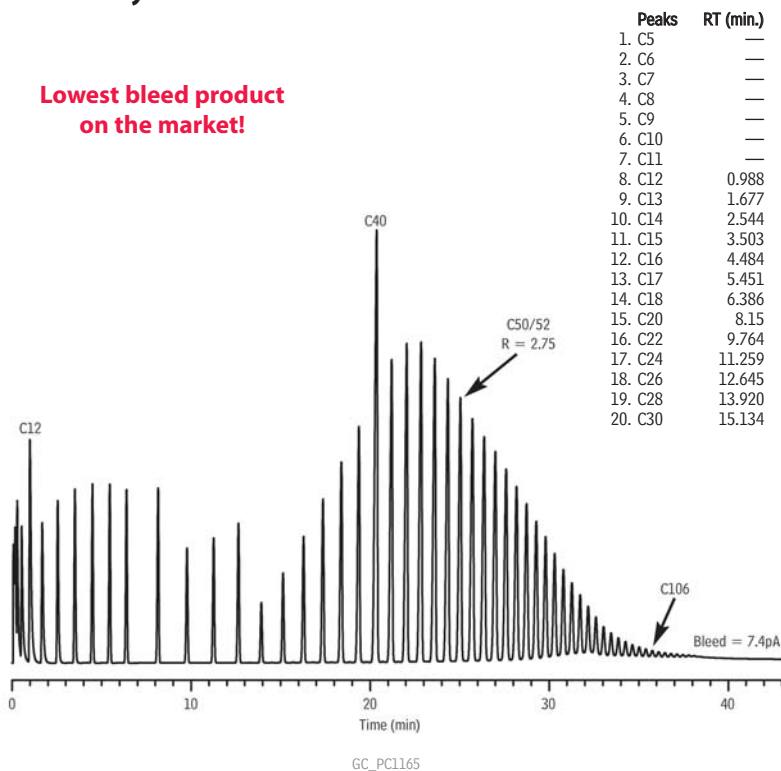
Rtx®-1



Column: Rtx®-1, 30m, 0.53mm ID, 0.25µm (cat.# 10125)
 Sample: 0.2µL injection of a synthetic hydrocarbon mix, ~ 0.1mg/mL per component
 Inj.: Direct injection using a Uniliner® inlet liner
 Oven temp.: 40°C to 340°C @ 5°C/min.
 Inj./det. temp.: 340°C
 Carrier gas: hydrogen
 Linear velocity: 40cm/sec. set @ 40°C
 FID sensitivity: 64 x 10⁻¹¹ AFS

C5-C106 Hydrocarbons on MXT®-1HT SimDist at 430 °C

Lowest bleed product on the market!



Peaks	RT (min.)	Peaks	RT (min.)	Peaks	RT (min.)
1. C5	—	21. C32	16.280	41. C72	30.789
2. C6	—	22. C34	17.364	42. C74	31.265
3. C7	—	23. C36	18.392	43. C76	31.725
4. C8	—	24. C38	19.371	44. C78	32.173
5. C9	—	25. C40	20.363	45. C80	32.609
6. C10	—	26. C42	21.199	46. C82	33.033
7. C11	—	27. C44	22.041	47. C84	33.454
8. C12	0.988	28. C46	22.843	48. C86	33.858
9. C13	1.677	29. C48	23.609	49. C88	34.256
10. C14	2.544	30. C50	24.340	50. C90	34.643
11. C15	3.503	31. C52	25.041	51. C92	35.024
12. C16	4.484	32. C54	25.712	52. C94	35.395
13. C17	5.451	33. C56	26.365	53. C96	35.758
14. C18	6.386	34. C58	26.990	54. C98	36.115
15. C20	8.15	35. C60	27.594	55. C100	36.460
16. C22	9.764	36. C62	28.173	56. C102	36.803
17. C24	11.259	37. C64	28.733	57. C104	37.139
18. C26	12.645	38. C66	29.274	58. C106	37.465
19. C28	13.920	39. C68	29.797		
20. C30	15.134	40. C70	30.303		

Column MXT®-1HT SimDist, 5 m, 0.53 mm ID, 0.10 µm (cat.# 70112)
Sample custom C5-C106 hydrocarbon standard
Diluent: carbon disulfide
Conc.: 1%
Injection
 Inj. Vol.: 0.5 µL cold on-column
 Temp. Program: 53°C to 430°C at 10°C/min. (hold 5 min.)
Oven
 Oven Temp: 50 °C to 430 °C at 10 °C/min. (hold 5 min.)
Carrier Gas He, constant flow
Flow Rate: 18 mL/min.
Detector FID @ 430 °C
Make-up Gas
 Flow Rate: 24 mL/min.
 Constant Column + Constant Make-up: 42 mL/min.
Make-up
 Gas Type: N₂
 Data Rate: 20 Hz
Instrument Shimadzu 2010 GC