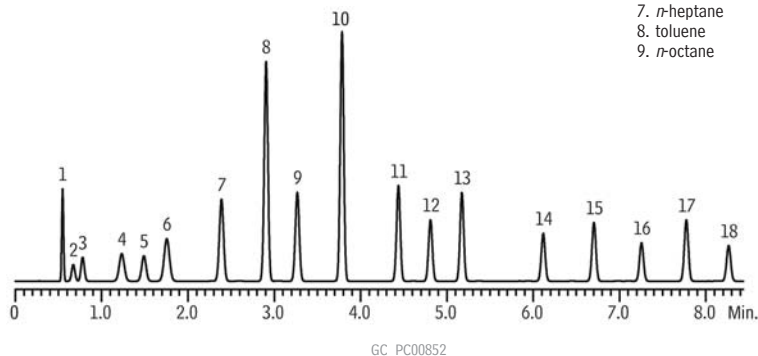


**Simulated Distillation
Rtx®-1 (Hydrogen Carrier Gas)**

- | | |
|------------------------|-----------------------------|
| 1. ethanol | 10. <i>p</i> -xylene |
| 2. isopentane | 11. <i>n</i> -propylbenzene |
| 3. <i>n</i> -pentane | 12. <i>n</i> -decane |
| 4. 2-methylpentane | 13. butylbenzene |
| 5. <i>n</i> -hexane | 14. <i>n</i> -dodecane |
| 6. 2,4-dimethylpentane | 15. <i>n</i> -tridecane |
| 7. <i>n</i> -heptane | 16. <i>n</i> -tetradecane |
| 8. toluene | 17. <i>n</i> -pentadecane |
| 9. <i>n</i> -octane | 18. <i>n</i> -hexadecane |

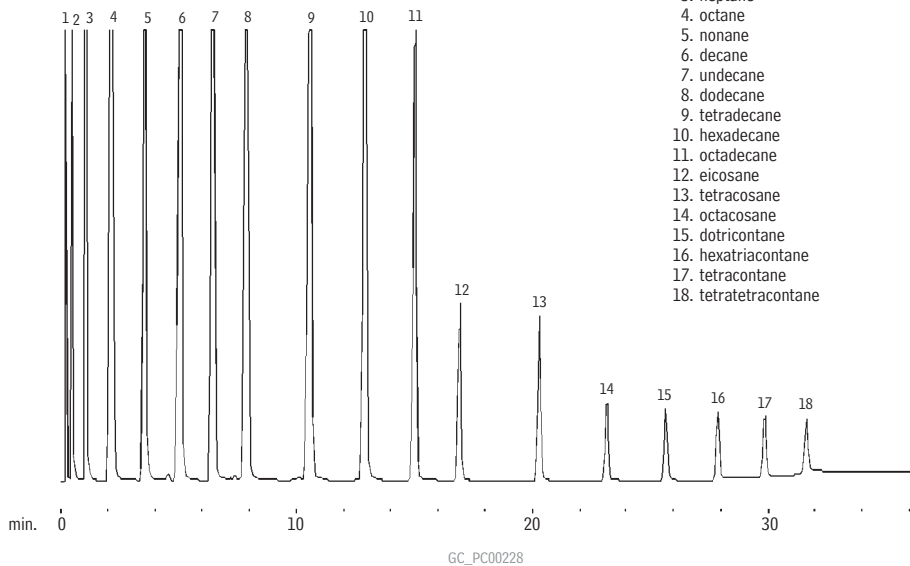


Column: Rtx®-1, 30m, 0.53mm ID, 5.0µm (cat.# 10179)
 Sample: custom paraffin mix, neat, 2.7-12.9% each component
 Inj.: 0.1µL splitless (hold 1 min.), 4mm single gooseneck inlet liner (cat.# 20904)
 Inj. temp.: 250°C
 Carrier gas: hydrogen, constant flow (Parker ChromGas® hydrogen generator)
 Linear velocity: 184cm/sec. @ 40°C
 Oven temp.: 40°C (1 min.) to 265°C @ 25°C/min. (hold 4 min.)
 Det.: FID @ 280°C

Simulated Distillation (ASTM D-2887)

**Rtx®-1 SimDist 2887
(packed)**

- | |
|-----------------------|
| 1. pentane |
| 2. hexane |
| 3. heptane |
| 4. octane |
| 5. nonane |
| 6. decane |
| 7. undecane |
| 8. dodecane |
| 9. tetradecane |
| 10. hexadecane |
| 11. octadecane |
| 12. eicosane |
| 13. tetracosane |
| 14. octacosane |
| 15. dotricontane |
| 16. hexatriacontane |
| 17. tetracontane |
| 18. tetratetracontane |



Column: Rtx®-1 SimDist 2887, SilcoSmooth® stainless steel, 25', 1/8", 2mm ID (cat.# 80000)
 Inj.: 1.0µL direct injection, 1-12% (w/w) each component
 Oven temp.: 35°C to 350°C @ 10°C/min. (hold 5 min.)
 Inj./det. temp.: 350°C
 Carrier gas: helium @ 25mL/min.
 FID sensitivity: 256 x 10⁻¹¹ AFS

cat.# 31674 (1% each listed analyte in CS₂) and cat.# 31675 (5% each, neat) meet requirements of ASTM D2887-01.