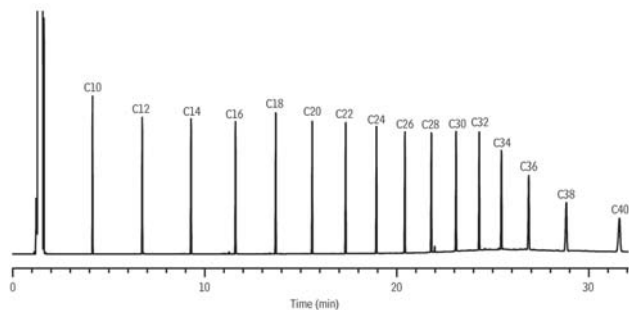


Crude Oil on Rxi®-5HT

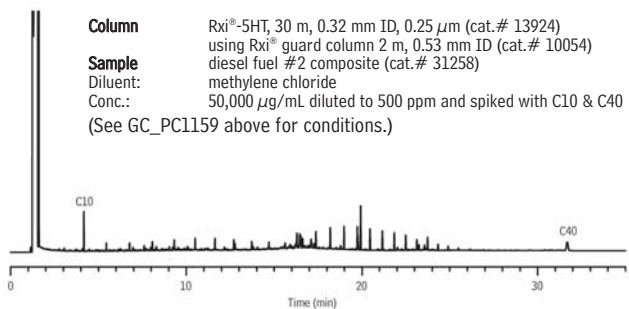


GC_PC1159

Column Rxi®-5HT, 30 m, 0.32 mm ID, 0.25 μ m (cat.# 13924)
using Rxi® Guard Column 2 m, 0.53 mm ID (cat.# 10054)
Sample System Performance Test Standard Mixture of *n*-Alkanes (cat.# 31678)
Diluent: Hexane
Conc.: 50 μ g/mL
Injection
Inj. Vol.: 1 μ L cold on-column
Temp. Program: 53°C to 300°C at 10°C/min. (hold 20 min.)
Oven
Oven Temp: 50 °C to 300 °C at 10 °C/min. (hold 20 min.)
Carrier Gas H₂, constant flow
Linear Velocity: 40 cm/sec. @ 50 °C
Dead Time: 1.25 min. @ 50 °C
Detector FID @ 330 °C
Make-up Gas
Flow Rate: 30 mL/min.
Make-up Gas Type: N₂
Data Rate: 20 Hz
Instrument Agilent/HP6890 GC

NEW!

Diesel on Rxi®-5HT

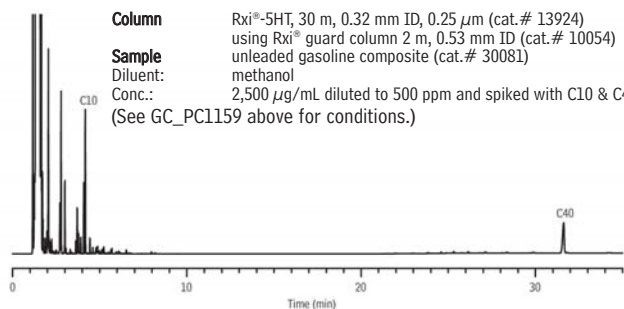


GC_PC1160

Column Rxi®-5HT, 30 m, 0.32 mm ID, 0.25 μ m (cat.# 13924)
using Rxi® guard column 2 m, 0.53 mm ID (cat.# 10054)
Sample diesel fuel #2 composite (cat.# 31258)
Diluent: methylene chloride
Conc.: 50,000 μ g/mL diluted to 500 ppm and spiked with C10 & C40
(See GC_PC1159 above for conditions.)

NEW!

Gasoline on Rxi®-5HT

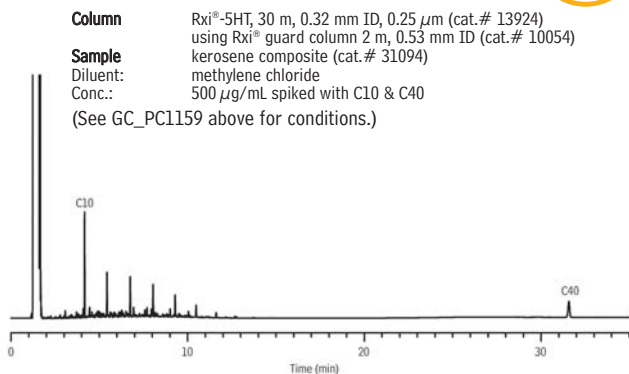


GC_PC1161

Column Rxi®-5HT, 30 m, 0.32 mm ID, 0.25 μ m (cat.# 13924)
using Rxi® guard column 2 m, 0.53 mm ID (cat.# 10054)
Sample unleaded gasoline composite (cat.# 30081)
Diluent: methanol
Conc.: 2,500 μ g/mL diluted to 500 ppm and spiked with C10 & C40
(See GC_PC1159 above for conditions.)

NEW!

Kerosene on Rxi®-5HT

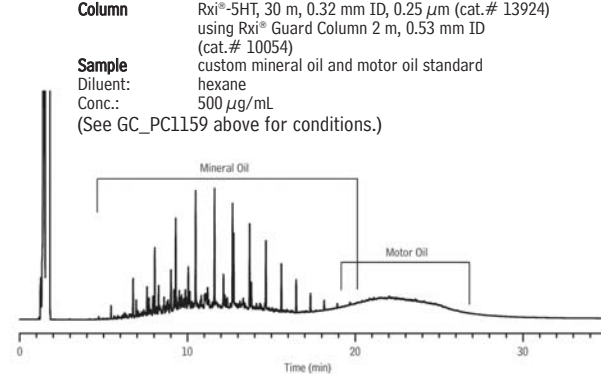


GC_PC1162

Column Rxi®-5HT, 30 m, 0.32 mm ID, 0.25 μ m (cat.# 13924)
using Rxi® guard column 2 m, 0.53 mm ID (cat.# 10054)
Sample kerosene composite (cat.# 31094)
Diluent: methylene chloride
Conc.: 500 μ g/mL spiked with C10 & C40
(See GC_PC1159 above for conditions.)

NEW!

Mineral Oil & Motor Oil on Rxi®-5HT



GC_PC1163

Column Rxi®-5HT, 30 m, 0.32 mm ID, 0.25 μ m (cat.# 13924)
using Rxi® Guard Column 2 m, 0.53 mm ID (cat.# 10054)
Sample custom mineral oil and motor oil standard
Diluent: hexane
Conc.: 500 μ g/mL
(See GC_PC1159 above for conditions.)

NEW!