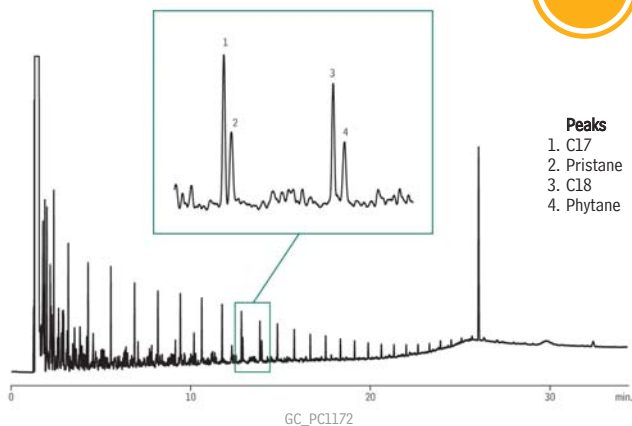


Midrange Crude on Rxi®-5HT

NEW!



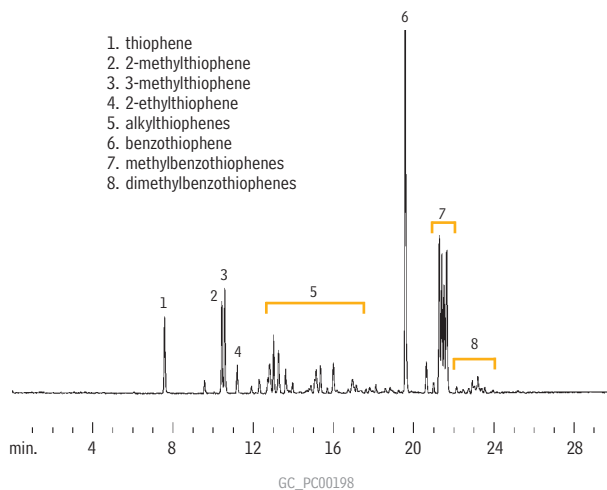
Peaks

1. C17
2. Pristane
3. C18
4. Phytane

Column Rxi®-5HT, 30 m, 0.32 mm ID, 0.10 μ m (cat.# 13909)
using retention gap 2 m, 0.53 mm ID,
Sample Midrange crude
Conc.: 500 μ g/mL
Injection
Inj. Vol.: 1.0 μ L cold on-column
Oven
Oven Temp: 50 °C to 300 °C at 10 °C/min. (hold 10 min.)
Carrier Gas H₂, constant flow
Linear Velocity: 40 cm/sec.
Detector FID @ 330 °C
Instrument Agilent/HP6890 GC
Acknowledgement Sample courtesy of Exxon Mobil Corporation

Sulfur in Gasoline

Rtx®-1



1. thiophene
2. 2-methylthiophene
3. 3-methylthiophene
4. 2-ethylthiophene
5. alkylthiophenes
6. benzothiophene
7. methylbenzothiophenes
8. dimethylbenzothiophenes

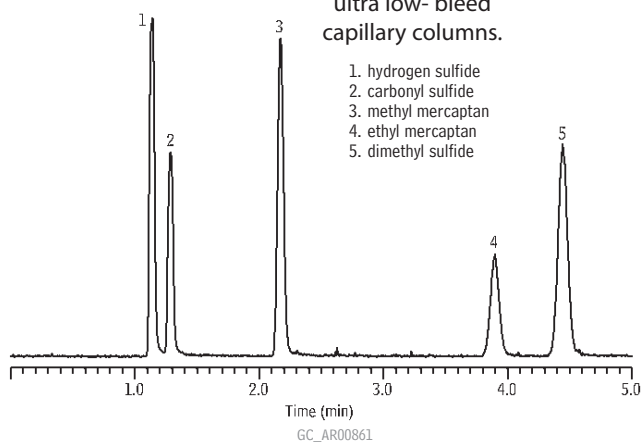
Column: Rtx®-1, 30m, 0.32mm ID, 4.0 μ m (cat.# 10198)
Sample: 1.0 μ L split injection of gasoline containing 300ppm total sulfur
Oven temp.: 40°C (hold 3 min.) to 275°C @ 10°C/min. (hold 5 min.)
Inj./det. temp.: 275°C
Det.: SCD
Carrier gas: helium
Linear velocity: 70cm/sec. (flow rate: 2.5mL/min.)
Split ratio: 10:1

Sulfur Compounds

Rxi®-1ms

Rxi® Technology!

Exceptionally inert,
ultra low- bleed
capillary columns.

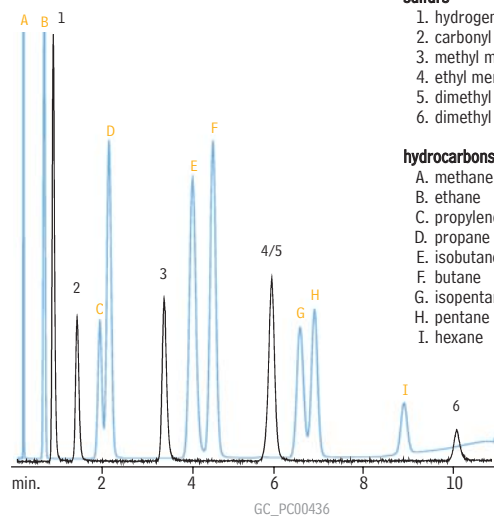


1. hydrogen sulfide
2. carbonyl sulfide
3. methyl mercaptan
4. ethyl mercaptan
5. dimethyl sulfide

Column: Rxi®-1ms, 30m, 0.32mm ID, 4.00 μ m (cat.# 13396)
Sample: hydrogen sulfide, carbonyl sulfide, methyl mercaptan, ethyl mercaptan, dimethyl sulfide, 100 ppbv each in helium 1mL splitless, direct
Inj.: 30°C
Sample loop temp.: 30°C
Carrier gas: helium, constant pressure
Linear velocity: 48cm/sec. @ 30°C
Oven temp.: 30°C
Det.: sulfur chemiluminescence detector
Det. temp.: 800°C

Sample storage & transfer:
SilcoCan® air monitoring canister with Siltek® treated 1/4" valve (cat.# 24182-650);
Sulfinit® treated gas sample loop, 1cc (cat.# 22848); Sulfinit® treated gas sample loop, 10cc (custom order)

Sulfur Compounds

Rt®-XLSulfur
(micropacked)

sulfurs

1. hydrogen sulfide
2. carbonyl sulfide
3. methyl mercaptan
4. ethyl mercaptan
5. dimethyl sulfide
6. dimethyl disulfide

hydrocarbons

- A. methane
- B. ethane
- C. propylene
- D. propane
- E. isobutane
- F. butane
- G. isopentane
- H. pentane
- I. hexane

Column: Rt®-XLSulfur micropacked column, 1m, 0.75mm ID (cat.# 19806)
Conc.: 50ppb each
Oven temp.: 60°C to 230°C @ 15°C/min.
Carrier gas: helium
Flow rate: 9mL/min.
Det.: SCD/FID

Sulfur standards courtesy of DCG Partnership 1 Ltd., Pearland, TX.