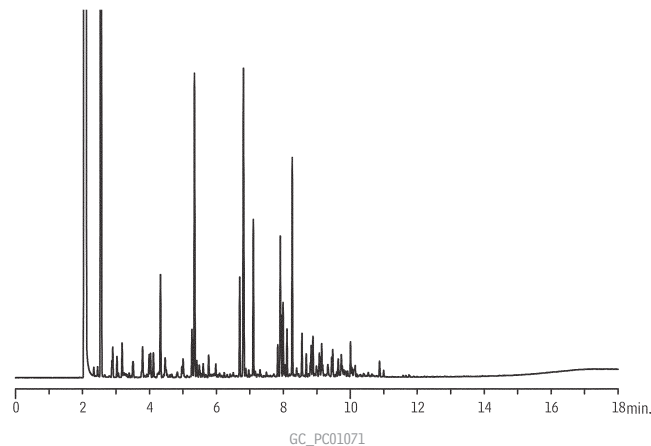
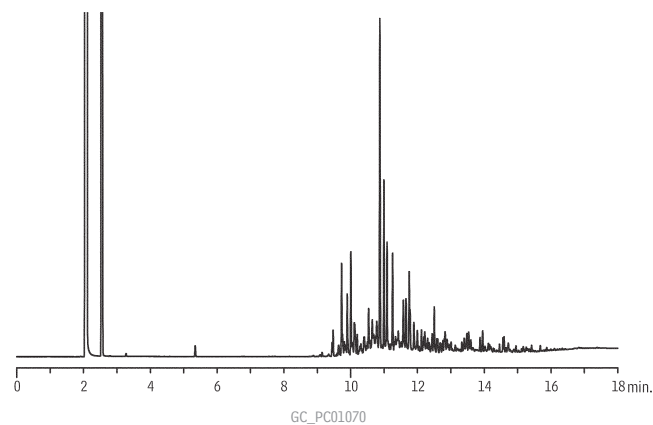


Unleaded Gasoline Rxi®-1ms



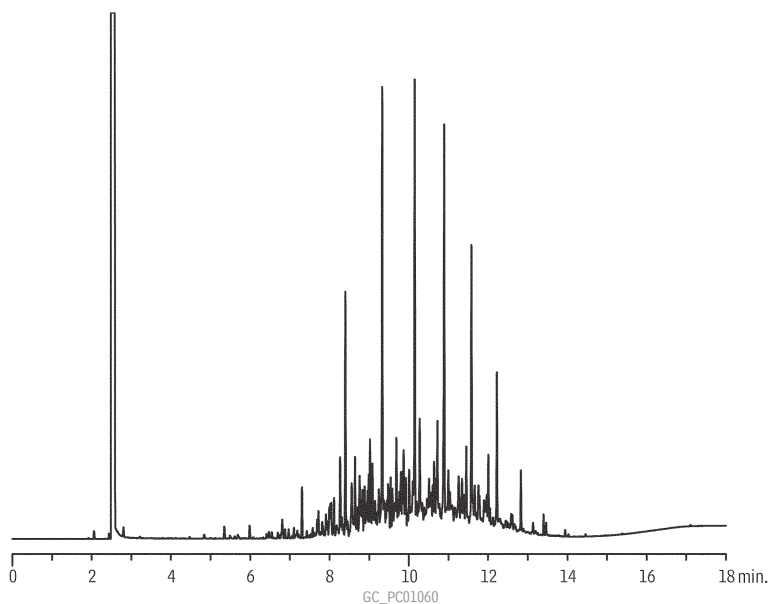
Column: Rxi®-1ms, 30m, 0.25mm ID, 0.25 μ m (cat.# 13323)
 Sample: 5,000 μ g/mL unleaded gasoline, unweathered, in methanol (cat.# 30096)
 Inj.: 1 μ L split (split ratio 20:1), 4mm single gooseneck liner w/ wool (cat.# 22405)
 Inj. temp.: 250°C
 Carrier gas: helium, constant flow
 Linear velocity: 28cm/sec. @ 50°C
 Oven temp.: 50°C (hold 2 min.) to 75°C @ 10°C/min. to 300°C @ 20°C/min. (hold 5 min.)
 Det.: FID @ 300°C

99% Weathered Unleaded Gasoline Rxi®-1ms



Column: Rxi®-1ms, 30m, 0.25mm ID, 0.25 μ m (cat.# 13323)
 Sample: 5,000 μ g/mL unleaded gasoline, 99% weathered, in methanol (cat.# 30436)
 Inj.: 1 μ L split (split ratio 20:1), 4mm single gooseneck liner w/ wool (cat.# 22405)
 Inj. temp.: 250°C
 Carrier gas: helium, constant flow
 Linear velocity: 28cm/sec. @ 50°C
 Oven temp.: 50°C (hold 2 min.) to 75°C @ 10°C/min. to 300°C @ 20°C/min. (hold 5 min.)
 Det.: FID @ 300°C

Unweathered Kerosene Rxi®-1ms



Column: Rxi®-1ms, 30m, 0.25mm ID, 0.25 μ m (cat.# 13323)
 Sample: 5,000 μ g/mL kerosene, unweathered, in methylene chloride (cat.# 31229)
 Inj.: 1 μ L split (split ratio 20:1), 4mm single gooseneck liner w/ wool (cat.# 22405)
 Inj. temp.: 250°C
 Carrier gas: helium, constant flow
 Linear velocity: 28cm/sec. @ 50°C
 Oven temp.: 50°C (hold 2 min.) to 75°C @ 10°C/min. to 300°C @ 20°C/min. (hold 5 min.)
 Det.: FID @ 300°C