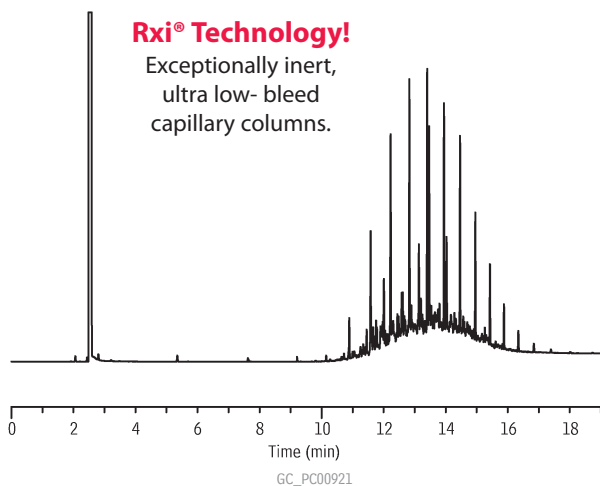


Arson Accelerants

50% Weathered Diesel Fuel #2

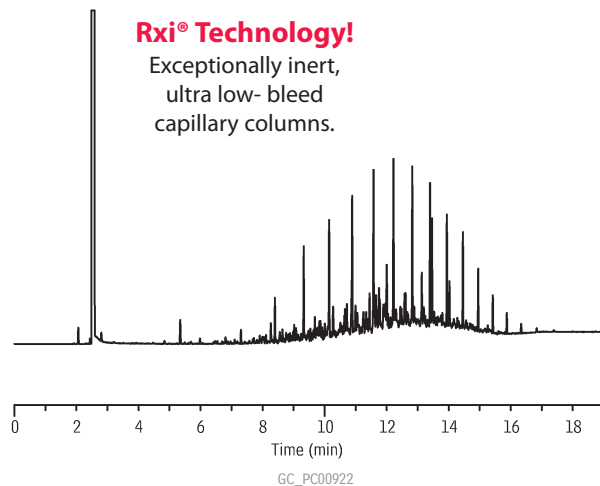
Rxi®-1ms



Column: Rxi®-1ms, 30m, 0.25mm ID, 0.50 μ m (cat.# 13338)
 Sample: 5,000 μ g/mL diesel fuel #2, 50% weathered (cat.# 31235) in methylene chloride
 Inj.: 1.0 μ L split (split ratio 20:1), 4mm single gooseneck w/wool inlet liner (cat.# 22405)
 Inj. temp.: 250°C
 Carrier gas: helium, constant flow
 Linear velocity: 28cm/sec. @ 50°C
 Oven temp.: 50°C (hold 2 min.) to 75°C @ 10°C/min., 300°C @ 20°C/min. (hold 5 min.)
 Det.: FID @ 300°C

Unweathered Diesel Fuel #2

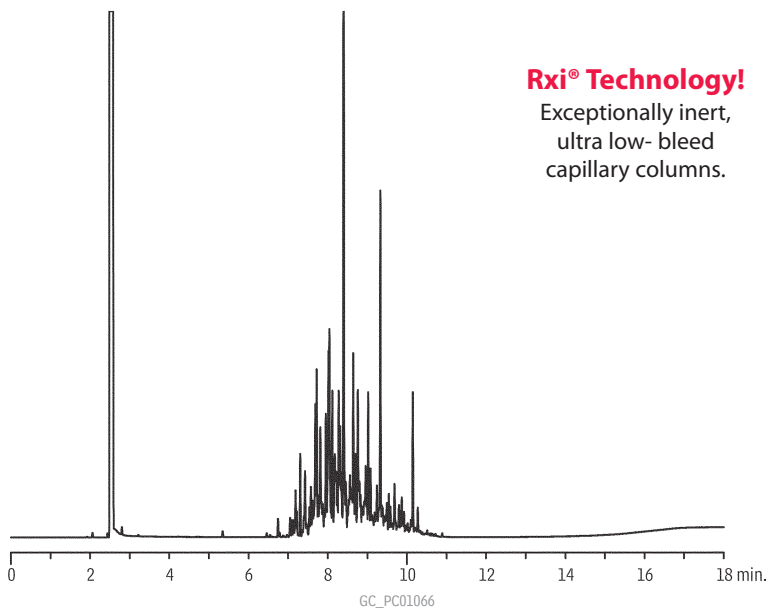
Rxi®-1ms



Column: Rxi®-1ms, 30m, 0.25mm ID, 0.50 μ m (cat.# 13338)
 Sample: 5,000 μ g/mL diesel fuel #2, unweathered (cat.# 31233) in methylene chloride
 Inj.: 1.0 μ L split (split ratio 20:1), 4mm single gooseneck w/wool inlet liner (cat.# 22405)
 Inj. temp.: 250°C
 Carrier gas: helium, constant flow
 Linear velocity: 28cm/sec. @ 50°C
 Oven temp.: 50°C (hold 2 min.) to 75°C @ 10°C/min., 300°C @ 20°C/min. (hold 5 min.)
 Det.: FID @ 300°C

Mineral Spirits

Rxi®-1ms



Column: Rxi®-1ms, 30m, 0.25mm ID, 0.25 μ m (cat.# 13323)
 Sample: 5,000 μ g/mL mineral spirits, unweathered, in methylene chloride (cat.# 31225)
 Inj.: 1 μ L split (split ratio 20:1), 4mm single gooseneck liner w/ wool (cat.# 22405)
 Inj. temp.: 250°C
 Carrier gas: helium, constant flow
 Linear velocity: 28cm/sec. @ 50°C
 Oven temp.: 50°C (hold 2 min.) to 75°C @ 10°C/min. to 300°C @ 20°C/min. (hold 5 min.)
 Det.: FID @ 300°C