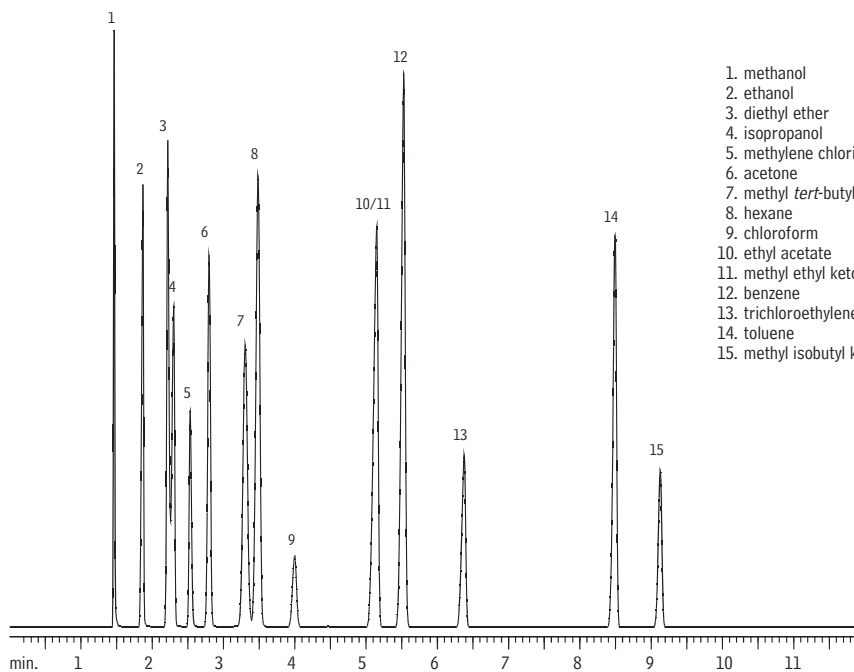


Abused Inhalants

Abused Inhalants

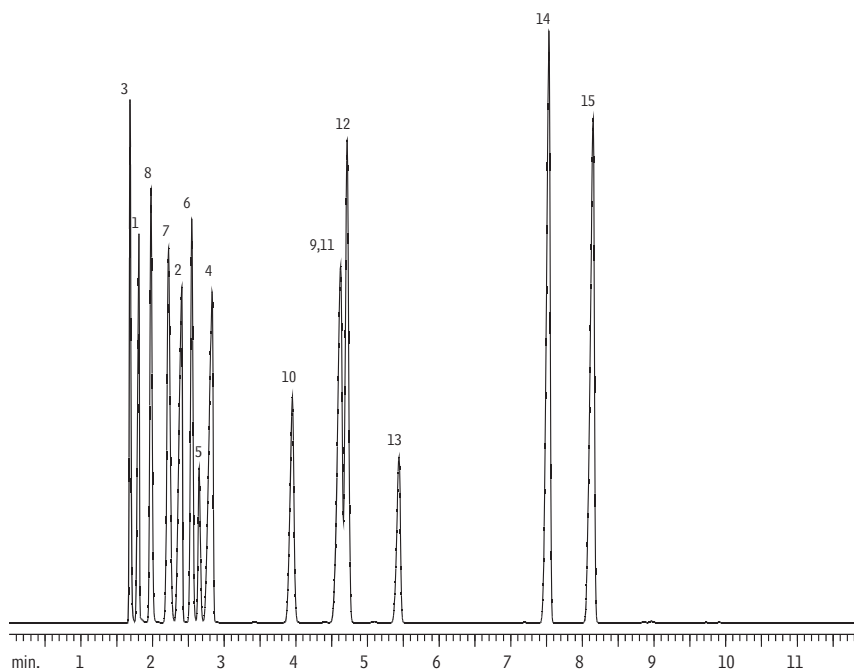
Rtx®-BAC1 & Rtx®-BAC2

Rtx®-BAC1



- 1. methanol
- 2. ethanol
- 3. diethyl ether
- 4. isopropanol
- 5. methylene chloride
- 6. acetone
- 7. methyl *tert*-butyl ether
- 8. hexane
- 9. chloroform
- 10. ethyl acetate
- 11. methyl ethyl ketone
- 12. benzene
- 13. trichloroethylene
- 14. toluene
- 15. methyl isobutyl ketone

Rtx®-BAC2



GC_PH00446

Columns: Rtx®-BAC1, 30m, 0.32mm ID, 1.80µm (cat.# 18003)
 Rtx®-BAC2, 30m, 0.32mm ID, 1.20µm (cat.# 18002)
 Oven temp.: 40°C (hold 4 min.) to 120°C @ 10°C/min.
 Carrier gas: helium
 Linear velocity: 50cm/sec.
 Det.: FID
 Sample: 250µL headspace
 Transfer line temp.: 125°C
 Sample loop temp.: 125°C
 Vial temp.: 70°C

Acknowledgement: Analyses performed using a Tekmar 7000 Headspace Autosampler on loan courtesy of Tekmar-Dohrmann.