

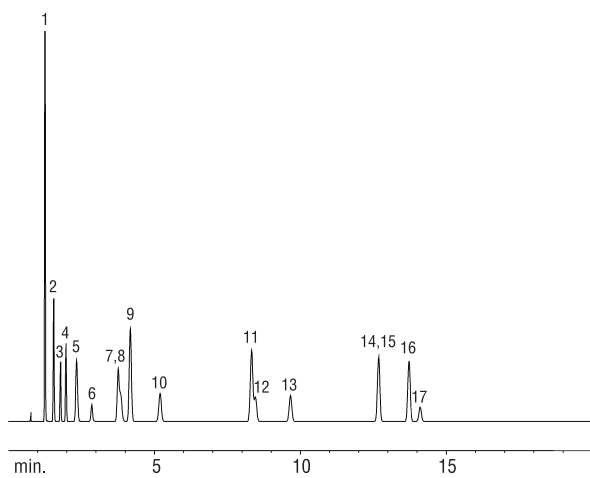
Solvents

Rtx®-BAC1 & Rtx®-BAC2

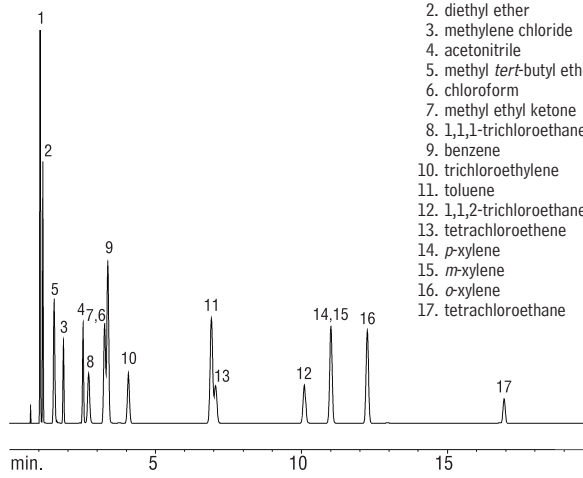
(headspace analysis)

Rtx®-BAC1, 30m, 0.53mm ID, 3.0µm (cat.# 18001)

Rtx®-BAC2, 30m, 0.53mm ID, 2.0µm (cat.# 18000)



GC_PH00509



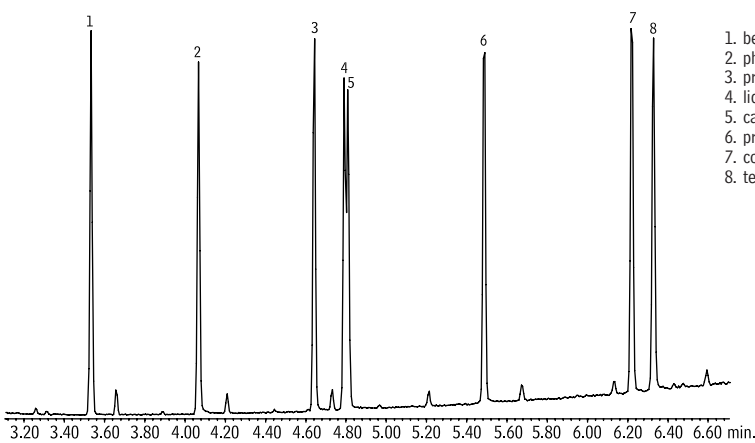
GC_PH00510

1. ethyl chloride
2. diethyl ether
3. methylene chloride
4. acetonitrile
5. methyl *tert*-butyl ether
6. chloroform
7. methyl ethyl ketone
8. 1,1,1-trichloroethane
9. benzene
10. trichloroethylene
11. toluene
12. 1,1,2-trichloroethane
13. tetrachloroethane
14. *p*-xylene
15. *m*-xylene
16. *o*-xylene
17. tetrachloroethane

Sample: 1.0mL headspace sample
Oven temp.: 40°C (hold 5 min.) to 240°C @ 5°C/min.
Inj./det. temp.: 240°C
Carrier gas: helium
Linear velocity: 65cm/sec.
Det.: FID

Cocaine & Cocaine Adulterants

Rtx®-440



GC_PH00770

1. benzocaine
2. phenacetin
3. prilocaine
4. lidocaine
5. caffeine
6. procaine
7. cocaine
8. tetracaine

Column: Rtx®-440, 30m, 0.25mm ID, 0.50µm (cat.# 12938)
Sample: 100µg/mL each compound in methanol
Inj.: 1.0µL split (split ratio 1:10), laminar cup splitter inlet liner (cat.# 20801)
Inj. temp.: 250°C
Carrier gas: helium, constant flow
Flow rate: 1mL/min.
Oven temp.: 150°C to 275°C @ 25°C/min., to 300°C @ 15°C/min. (hold 5.0 min.)
Det.: MS
Transfer line temp.: 180°C
Scan range: 35-550amu
Ionization: EI
Mode: scan

Chromatogram Search Tool

Search by compound name, synonym, CAS # or keyword

www.restek.com/chromatograms

