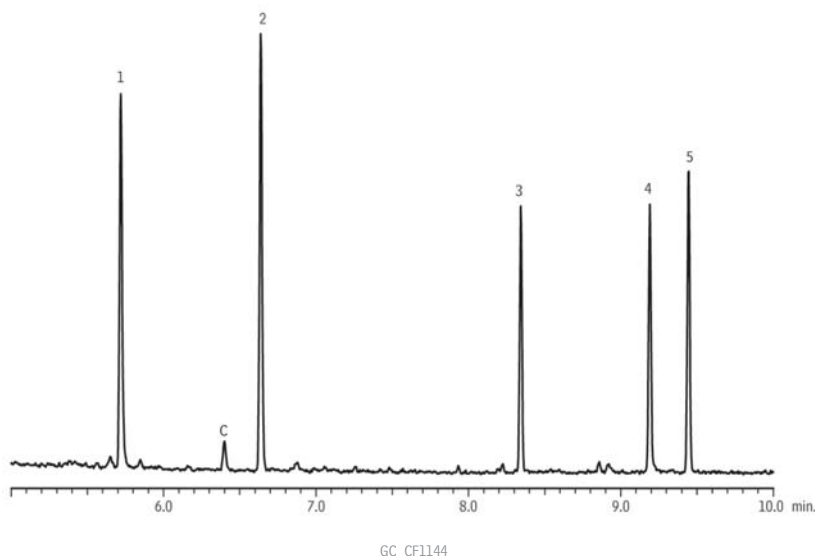


## Derivatized Amphetamines (500 ng/mL)

Rxi®-5Sil MS

NEW!



## Peaks

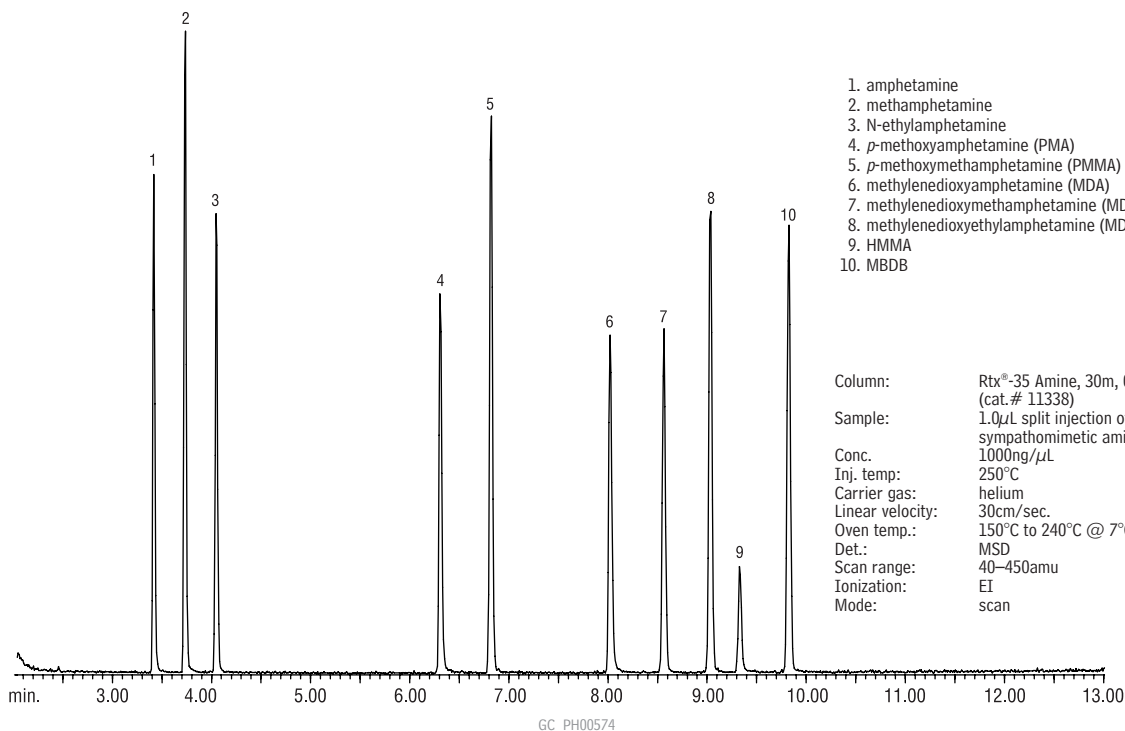
1. Amphetamine
2. Methamphetamine
3. MDA
4. MDMA
5. MDEA
- C-contaminant

**Column** Rxi®-5Sil MS, 30 m, 0.25 mm ID, 0.25  $\mu$ m (cat.# 13623)  
**Sample**  
 Diluent: Butyl chloride  
 Conc.: 500 ng/mL HFAA derivatives  
**Injection**  
 Inj. Vol.: 1  $\mu$ L splitless (hold 1 min.)  
 Liner: 3.5mm Gooseneck Splitless w/Wool (cat.# 22286-200.1)  
 Inj. Temp.: 250 °C  
 Purge Flow: 28 mL/min.  
**Oven**  
 Oven Temp: 75 °C to 300 °C at 15 °C/min.  
 Carrier Gas: He, constant linear velocity  
 Linear Velocity: 45 cm/sec., 13.5 psi, 93.1kPa @ 75 °C  
**Detector**  
 Mode: Scan  
 Transfer Line  
 Temp.: 250 °C  
 Analyzer Type: Quadrupole  
 Source Temp.: 200 °C  
 Electron Energy: 70 eV  
 Solvent Delay  
 Time: 4 min.  
 Tune Type: PFTBA  
 Ionization Mode: EI  
 Scan Range: 40-300 amu  
 Scan Rate: 5 scans/sec.  
**Instrument** Shimadzu 2010 GC & QP2010+ MS

Rx

## Sympathomimetic Amines (Basic Drugs) (Underivatized)

Rtx®-35 Amine



1. amphetamine
2. methamphetamine
3. N-ethylamphetamine
4. *p*-methoxyamphetamine (PMA)
5. *p*-methoxymethamphetamine (PMMA)
6. methylenedioxyamphetamine (MDA)
7. methylenedioxymethamphetamine (MDMA)
8. methylenedioxyethylamphetamine (MDEA)
9. HMMA
10. MBDB

**Column:** Rtx®-35 Amine, 30m, 0.25mm ID, 0.50 $\mu$ m (cat.# 11338)  
**Sample:** 1.0 $\mu$ L split injection of underivatized sympathomimetic amines  
**Conc.** 1000ng/ $\mu$ L  
**Inj. temp:** 250°C  
**Carrier gas:** helium  
**Linear velocity:** 30cm/sec.  
**Oven temp.:** 150°C to 240°C @ 7°C/min.  
**Det.:** MSD  
**Scan range:** 40-450amu  
**Ionization:** EI  
**Mode:** scan