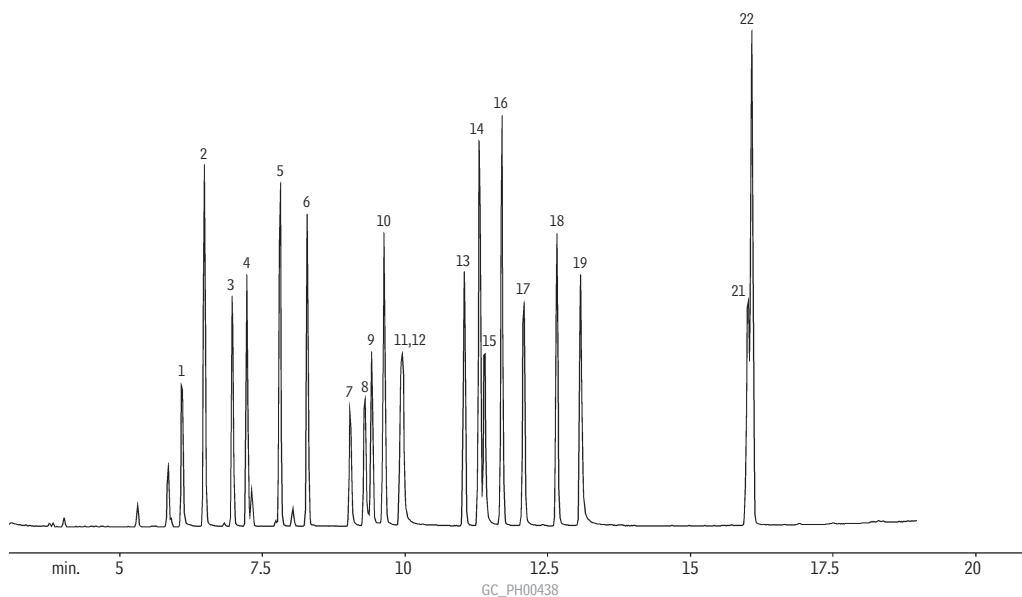


## Sympathomimetic Amines

## Sympathomimetic Amines (Basic Drugs) (Underivatized)

## Rtx®-5 Amine



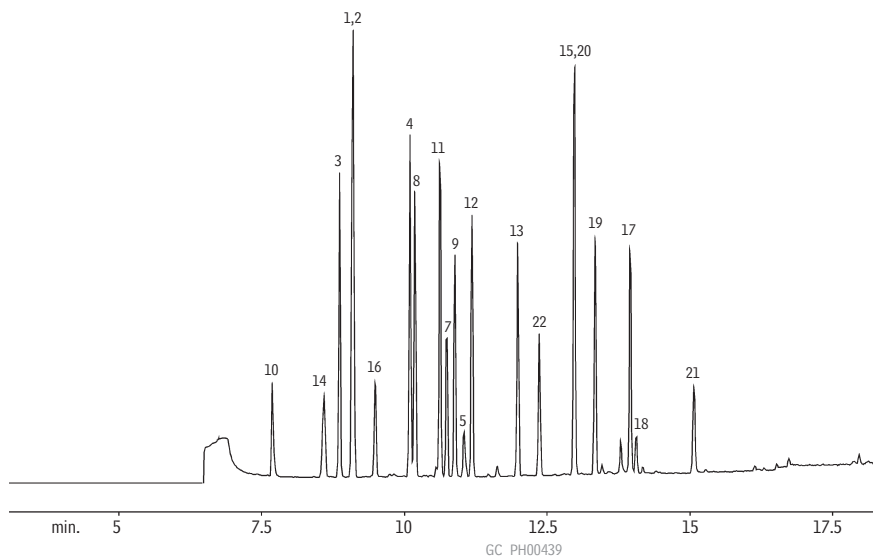
Column: Rtx®-5 Amine, 30m, 0.25mm ID, 0.50 $\mu$ m (cat.# 12338)  
 Instrument: Varian 3400 GC coupled with Varian Saturn 2000 MS detector  
 Inj.: 1 $\mu$ L, split, split vent flow rate 45mL/min.  
 Inj. temp.: 250°C  
 Carrier gas: helium  
 Det.: mass spectroscopy data collected using a scan range of 40 amu through 600 amu.  
 Oven temp.: 100°C to 310°C @ 10°C/min.

Ionization performed in the EI Auto mode.

1. phenylethylamine
2. amphetamine
3. phentermine
4. methamphetamine
5. fenfluramine
6. mephentermine
7. cathinone
8. phenylpropanolamine
9. methcathinone
10. nicotine
11. ephedrine
12. pseudoephedrine
13. phenmetrazine
14. phendimetrazine
15. methylenedioxyamphetamine
16. diethylpropion
17. methylenedioxymethamphetamine
18. methylenedioxyethylamphetamine
19. 4-methyl-2,5-dimethoxyamphetamine
20. phenylephrine
21. caffeine
22. benzphetamine

## Sympathomimetic Amines (Basic Drugs) (HFBA Derivatized)

## Rtx®-200



Column: Rtx®-200, 30m, 0.25mm ID, 0.50 $\mu$ m (cat.# 15038)  
 Instrument: Varian 3400 GC coupled with Varian Saturn 2000 MS detector  
 Inj.: 1 $\mu$ L, split, split vent flow rate 45mL/min.  
 Inj. temp.: 250°C  
 Carrier gas: helium  
 Det.: mass spectroscopy data collected using a scan range of 40 amu through 600 amu.  
 Oven temp.: 100°C to 310°C @ 10°C/min.

Ionization performed in the EI Auto mode.