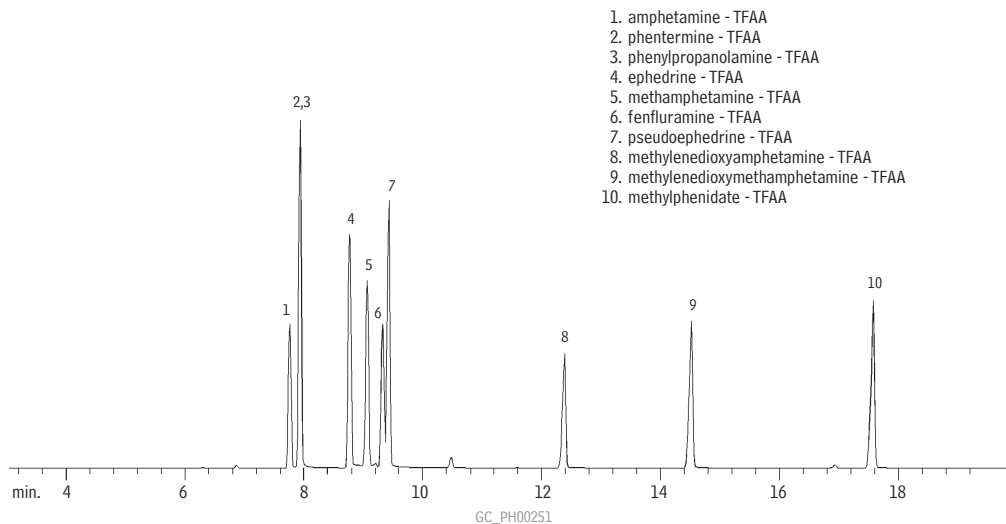


## Sympathomimetic Amines (Basic Drugs) (TFAA Derivatives)

Rtx®-5

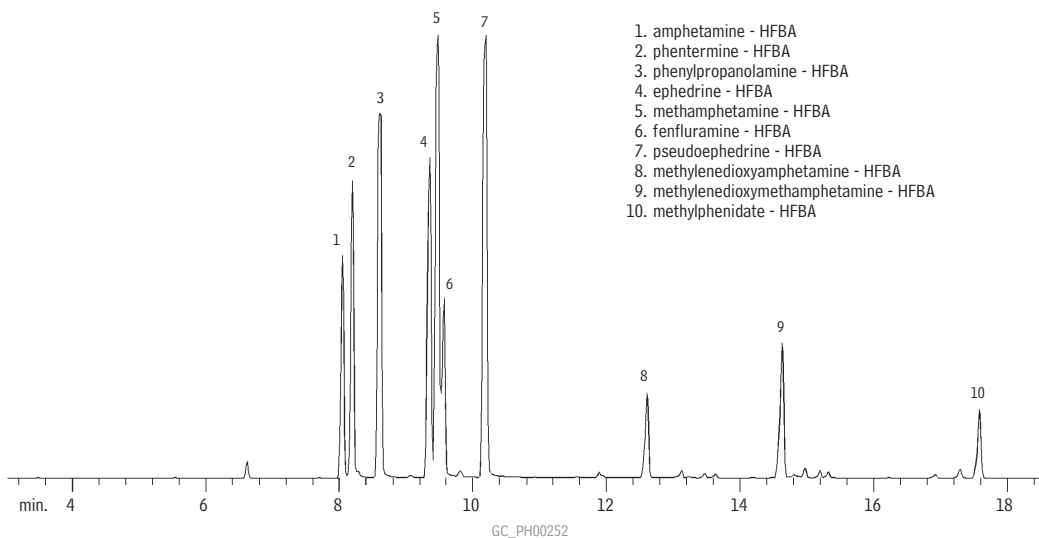


1. amphetamine - TFAA
2. phentermine - TFAA
3. phenylpropanolamine - TFAA
4. ephedrine - TFAA
5. methamphetamine - TFAA
6. fenfluramine - TFAA
7. pseudoephedrine - TFAA
8. methylenedioxyamphetamine - TFAA
9. methylenedioxymethamphetamine - TFAA
10. methylphenidate - TFAA

Column: Rtx®-5, 30m, 0.25mm ID, 0.25 $\mu$ m (cat.# 10223)  
 Sample: 1.0 $\mu$ L splitless injection of derivatized sympathomimetic amines  
 Conc.: approximately 2.5ng/ $\mu$ L  
 Oven temp.: 40°C (hold 1 min.) to 150°C @ 30°C/min.,  
 to 300°C @ 5°C/min.  
 Inj. temp.: 225°C  
 Interface temp.: 275°C  
 Det.: MSD  
 Ionization: EI  
 Carrier gas: helium  
 Linear velocity: 20cm/sec. set @ 100°C  
 Splitless hold time: 1 min.

## Sympathomimetic Amines (Basic Drugs) (HFBA Derivatives)

Rtx®-5



1. amphetamine - HFBA
2. phentermine - HFBA
3. phenylpropanolamine - HFBA
4. ephedrine - HFBA
5. methamphetamine - HFBA
6. fenfluramine - HFBA
7. pseudoephedrine - HFBA
8. methylenedioxyamphetamine - HFBA
9. methylenedioxymethamphetamine - HFBA
10. methylphenidate - HFBA

Column: Rtx®-5, 30m, 0.25mm ID, 0.25 $\mu$ m (cat.# 10223)  
 Sample: 1.0 $\mu$ L splitless injection of sympathomimetic amines  
 Conc.: approximately 2.5ng/ $\mu$ L  
 Oven temp.: 40°C (hold 1 min.) to 150°C @ 30°C/min.,  
 to 300°C @ 5°C/min.  
 Inj. temp.: 225°C  
 Interface temp.: 275°C  
 Det.: MSD  
 Ionization: EI  
 Carrier gas: helium  
 Linear velocity: 20cm/sec. set @ 100°C  
 Splitless hold time: 1 min.