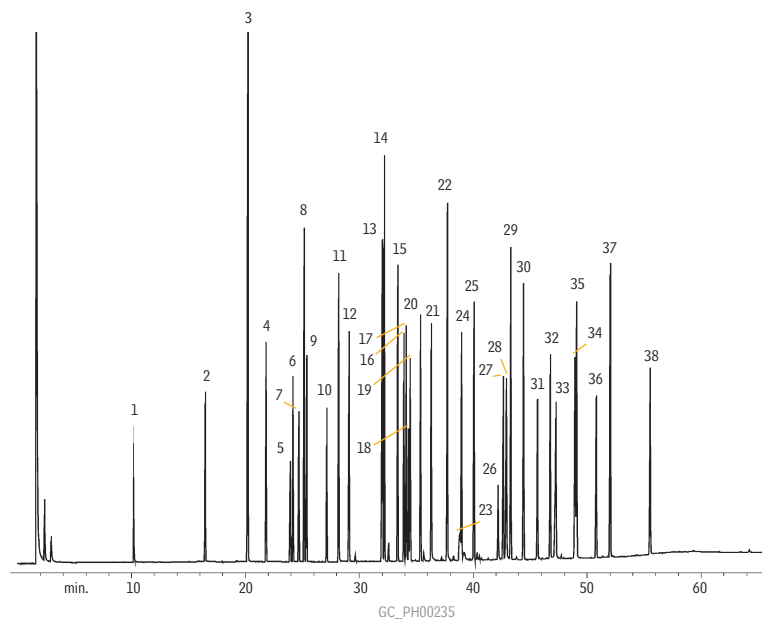


## Basic Drugs (Underivatized)

Rtx®-5

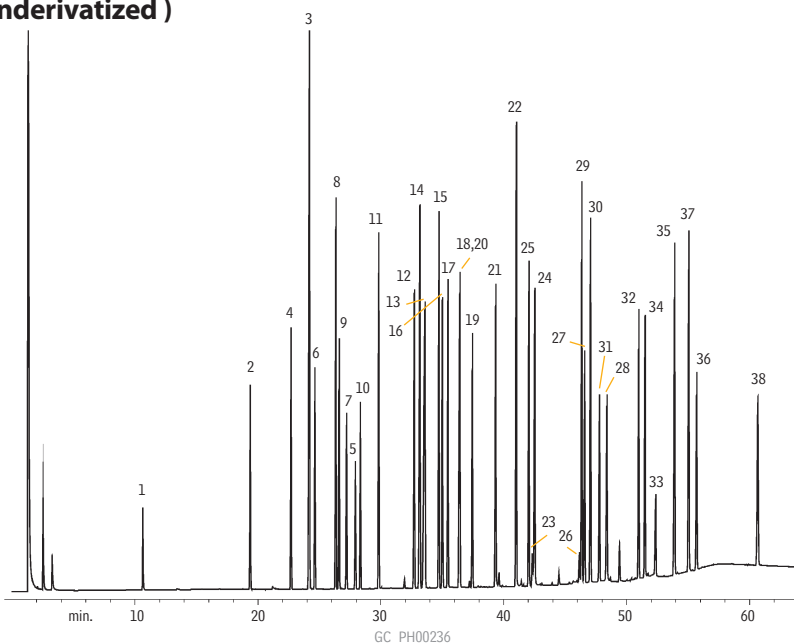


Column: Rtx®-5, 30m, 0.25mm ID, 0.25 $\mu$ m (cat.# 10223)  
 Sample: 1.0 $\mu$ L split injection of a basic drug sample  
 Conc.: 1,000ng/ $\mu$ L  
 Oven temp.: 100°C to 325°C @ 4°C/min. (hold 10 min.)  
 Inj./det. temp.: 250°C/320°C  
 Carrier gas: helium  
 Linear velocity: 30cm/sec. set @ 100°C  
 FID sensitivity: 1.28 x 10<sup>10</sup> AFS  
 Split ratio: 50:1

1. nicotine
2. benzocaine
3. cotinine
4. meperidine
5. caffeine
6. benzphetamine
7. ketamine
8. diphenhydramine
9. lidocaine
10. phenyltoloxamine
11. tripeleennamine
12. phenothiazine
13. dextromethorphan
14. methadone
15. amitriptyline
16. trimipramine
17. tetracaine
18. pyrilamine
19. medazepam
20. bupivacaine
21. scopolamine
22. codeine
23. morphine
24. diazepam
25. chlorpromazine
26. temazepam
27. flunitrazepam
28. bromazepam
29. prazepam
30. acetopromazine
31. flurazepam
32. papaverine
33. clonazepam
34. haloperidol
35. alprazolam
36. triazolam
37. thioridazine
38. trazodone

## Basic Drugs (Underivatized)

Rtx®-35



Column: Rtx®-35, 30m, 0.25mm ID, 0.25 $\mu$ m (cat.# 10423)  
 Sample: 1.0 $\mu$ L split injection of a basic drug sample  
 Conc.: 1,000ng/ $\mu$ L  
 Oven temp.: 100°C to 325°C @ 4°C/min. (hold 10 min.)  
 Inj./det. temp.: 250°C/320°C  
 Carrier gas: helium  
 Linear velocity: 30cm/sec. set @ 100°C  
 FID sensitivity: 1.28 x 10<sup>10</sup> AFS  
 Split ratio: 50:1